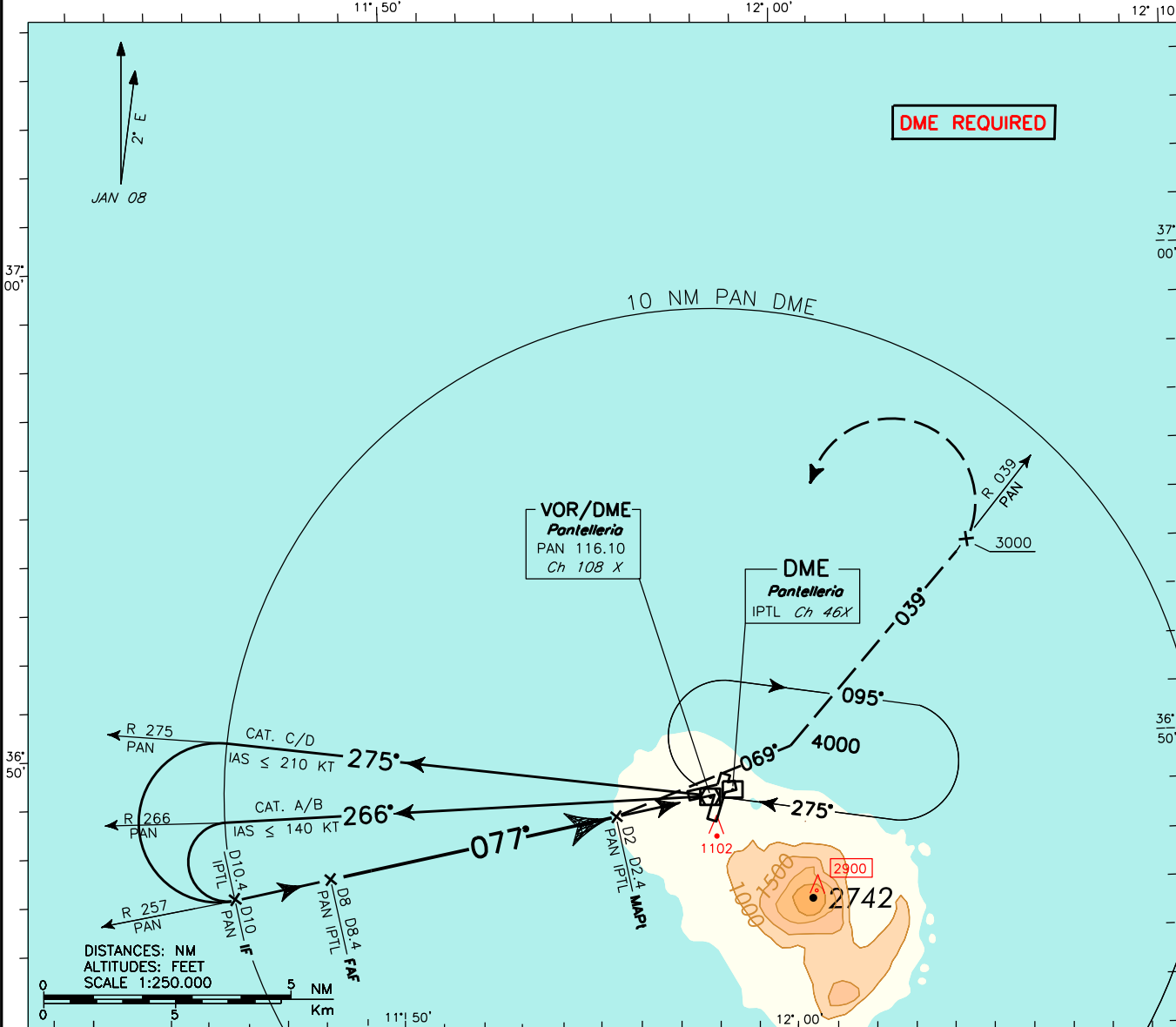
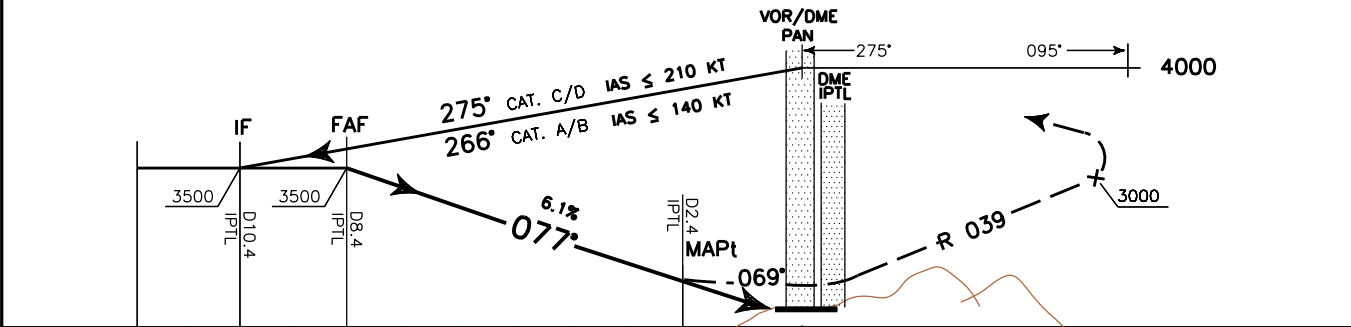


DOC.8168 - ED.5 2006 - AMDT.4
CHANGE: RENUMBERED PAGE

| | | | | |
|---|--|--------------------------------------|---|---------------------------|
| <p>REMARK: Final Approach track offset 2.3° from RWY center line. RWY center line intercepted 2902 m before THR08.</p> | <p>APP <i>Pantelleria Approach</i> 119.350</p> <p>TWR <i>Pantelleria Tower</i> 118.450</p> | <p>AD ELEV 629</p> | <p>LICG VOR-Y RWY 08</p> | <p>PANTELLERIA</p> |
|---|--|--------------------------------------|---|---------------------------|



TRANSITION ALT 5000 **MISSED APPROACH:** Not later than 2 NM before PAN VOR climb to 4000 Ft turning left on track 069° to intercept and follow RDL 039, passing 3000 Ft turn left to PAN VOR to be reached at 4000 Ft.



| | | |
|-----------|---|---------|
| * PAN DME | D12 D11 D10 D9 D8 D7 D6 D5 D4 D3 D2 D1 0 THR ELEV 629 | PAN DME |
| 13 | 12 11 10 9 8 7 6 5 4 3 2 1 0 1 2 3 4 5 6 7 8 9 | NM |

| STRAIGHT-IN LANDING RWY 08 | | CIRCLE TO LAND | | CIRCLING SECTORS | GS FT PER MIN | FAF-MAPt 6 NM | MAPt-THR 1.58 NM | DME PAN | ALT (HGT) | MSA 25NM PAN VOR |
|----------------------------|-------------------|----------------|-------------|----------------------|------------------|------------------|---------------------|---------|------------|----------------------|
| OCA(H) 1350(721) | MDA(H) 1650(1021) | MAX KT | OCA(H) | | | | | | | |
| A | 2250M | 100 | 1600 (971) | 2100 (1471) | 3000M | 80 | 4 : 30 | 1 : 11 | 7 | 3120 (2491) |
| B | | 135 | | | 3600M | 100 | 3 : 36 | 0 : 57 | 6 | 2750 (2121) |
| C | | 180 | 1700 (1071) | | 3600M | 120 | 3 : 00 | 0 : 47 | 5 | 2380 (1751) |
| D | 3000M | 205 | | | 5400M | 140 | 2 : 34 | 0 : 41 | 4 | 2010 (1381) |
| | | | | | 160 | 2 : 15 | 0 : 36 | 2 | 1270 (641) | |