

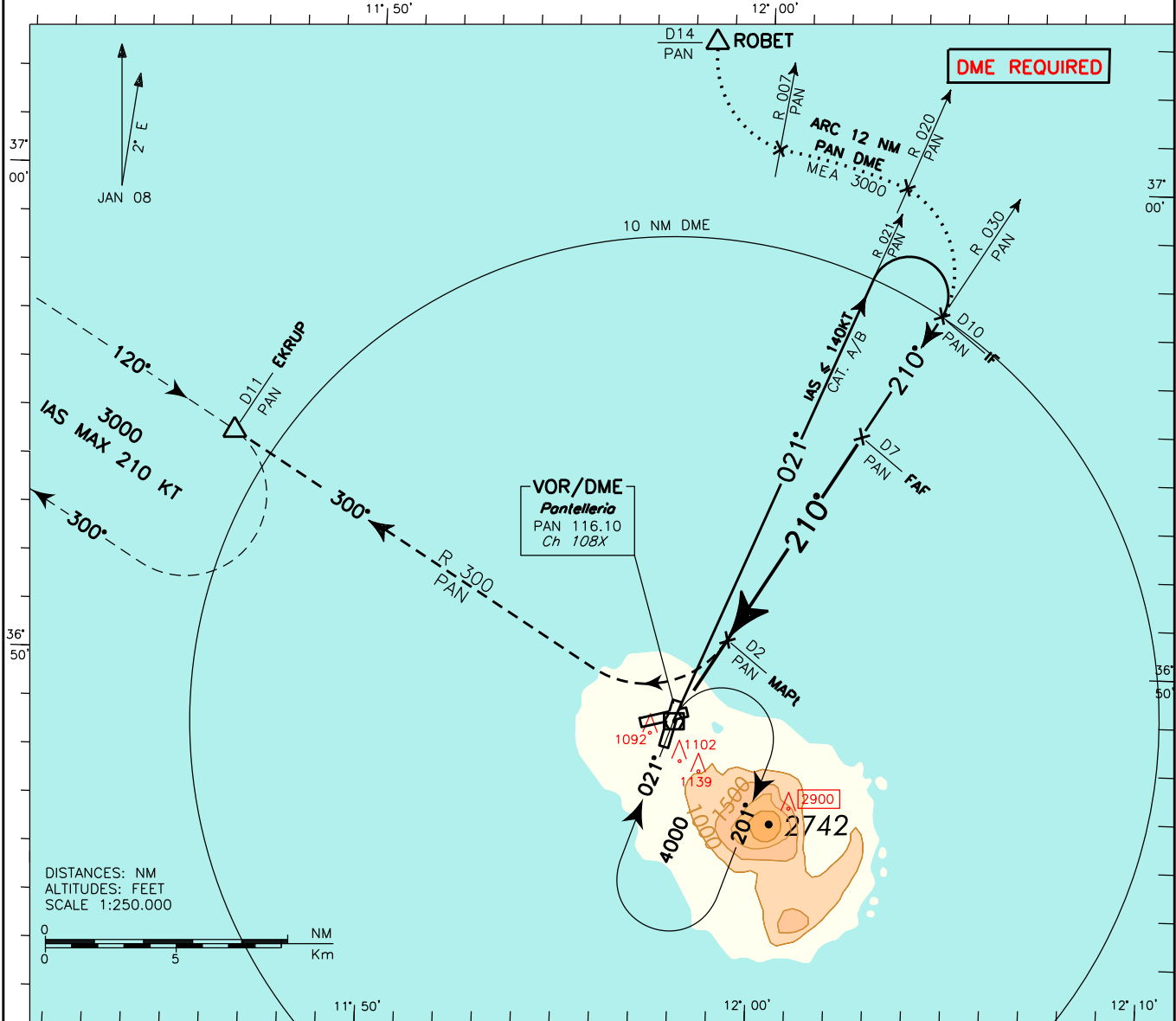
AMD.T.4
DOC.8168 - ED.5 2006
CHANGE: RENUMBERED PAGE

REMARK:
Final approach track off set 4° from RWY center line.
RWY center line intercepted 1594 m before THR 21.

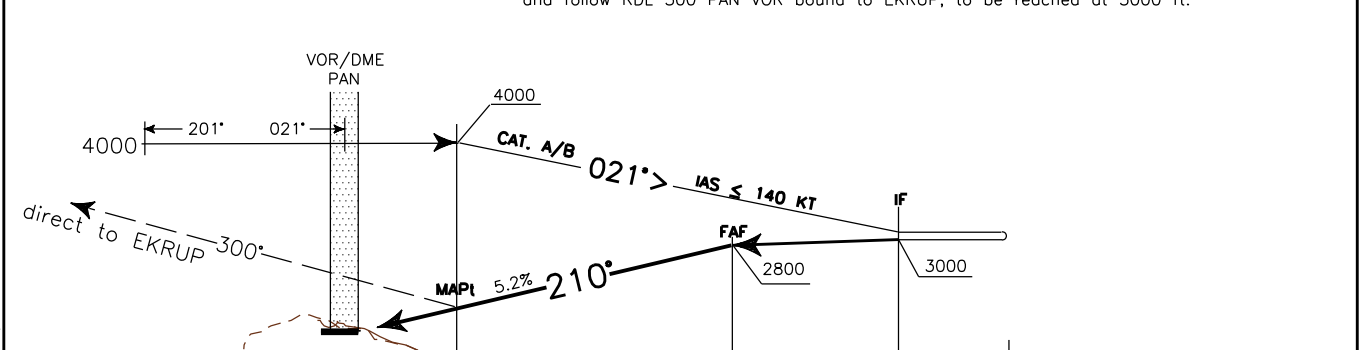
APP Pantelleria Approach **119.350**
TWR Pantelleria Tower **118.450**

AD ELEV **629**
LICG

PANTELLERIA
VOR RWY 21
(CAT. A/B)



TRANSITION ALT 5000
MISSED APPROACH: Not later than 2 NM before PAN DME, climb to 3000 ft turning right to intercept and follow RDL 300 PAN VOR bound to EKRUP, to be reached at 3000 ft.



PAN DME		THR ELEV 587	D1	D2	D3	D4	D5	D6	D7	D8	D9	D10	D11	D12	D13	D14	D15	D16	D17	PAN DME	
6 NM			0	1	2	3	4	5	6	7	8	9	10	11	12	13	14	15	16	17	18 NM

STRAIGHT-IN LANDING RWY 21		CIRCLE TO LAND			CIRCLING SECTORS	GS	FT PER MIN	FAF-MAPt		MAPt-THR		PAN DME	ALT (HGT)	MSA 25NM PAN VOR 3900
OCA(H) 1600(1013)		MAX KT	OCA(H)	MDA(H)				5 NM	1.8NM	PAN DME	ALT (HGT)			
MDA(H) 1600(1013)														
A	2250M	100	1600 (971)	2100 (1471)	VIS 3000M	80	425	3 : 45	1 : 21	7	2800 (2213)			
B		135				100	530	3 : 00	1 : 05	6	2480 (1893)			
						120	635	2 : 30	0 : 54	5	2160 (1573)			
						140	740	2 : 09	0 : 46	4	1840 (1253)			
						160	960	1 : 53	0 : 41	3	1520 (933)			
										2	1205 (618)			