

AMDT 4

DOC.8168-ED.5 2006

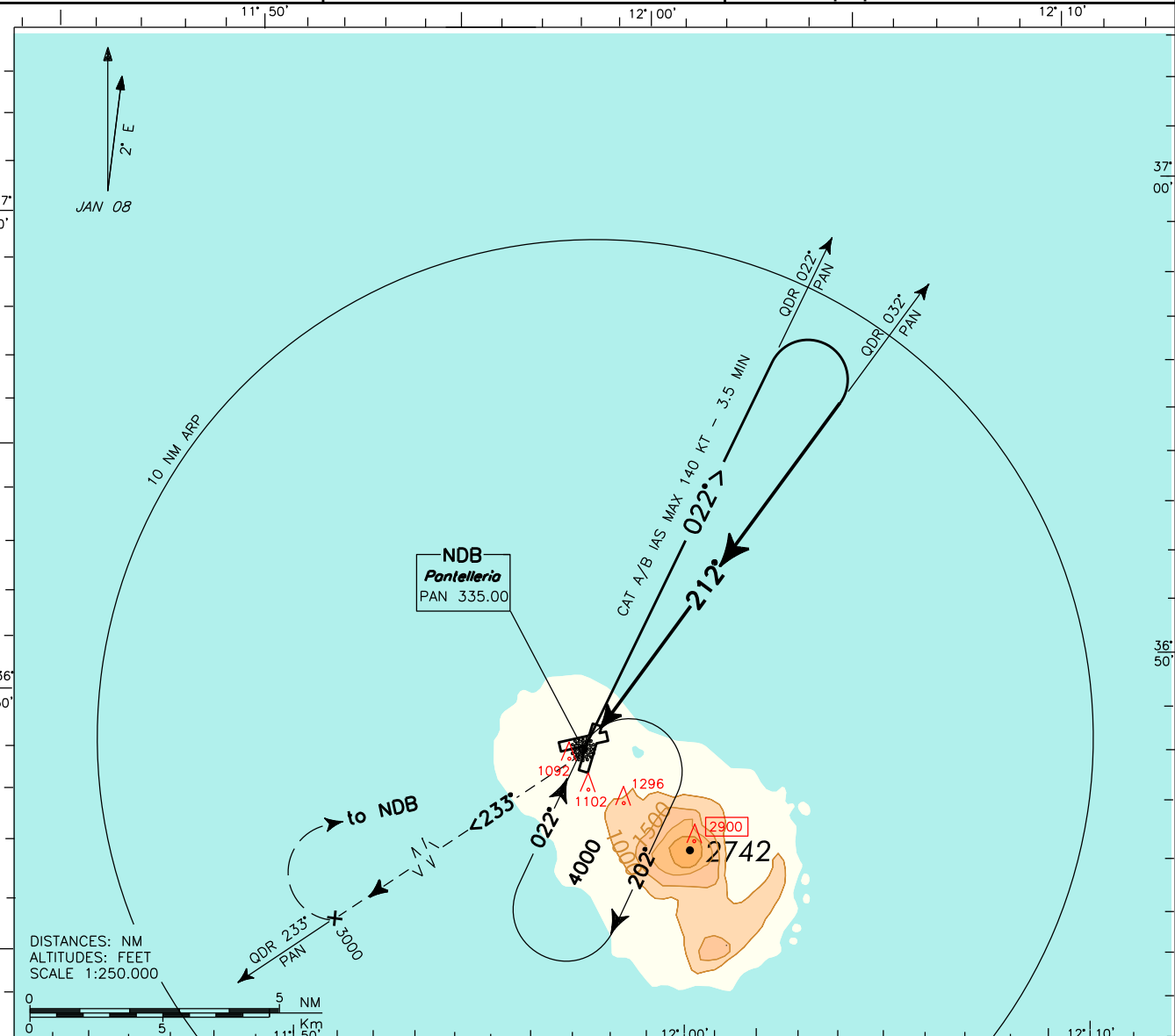
CHANGE: RENUMBERED PAGE \*

**REMARK:** Final approach track offset 5.7° from RCL.  
RWY center line intercepted 2653 m before THR 21.

<b>APP</b>	Pantelleria Approach	<b>119.350</b>
<b>TWR</b>	Pantelleria Tower	<b>118.450</b>

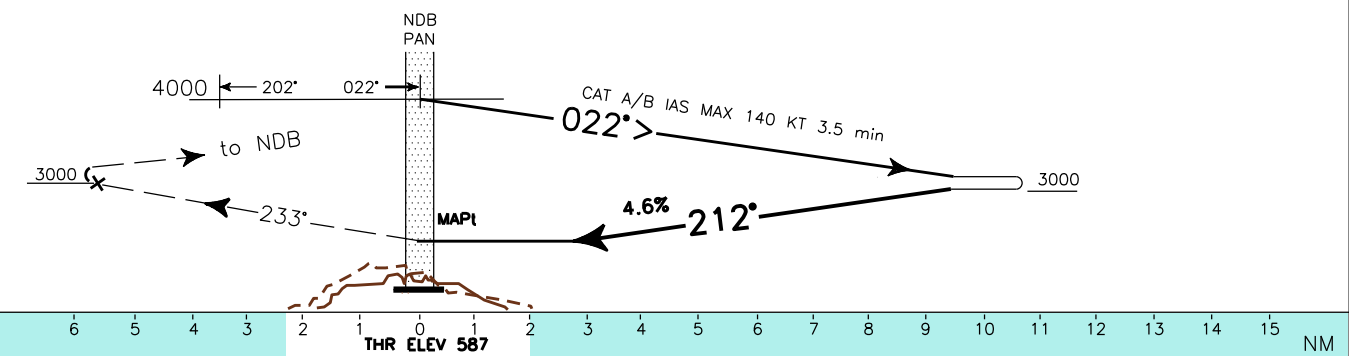
<b>AD ELEV</b>	<b>629</b>
----------------	------------

<b>LICG</b>	<b>PANTELLERIA</b>
	<b>NDB RWY 21</b>
	<b>(CAT. A/B)</b>



TRANSITION ALT 5000

**MISSED APPROACH:** Proceed to PAN NDB climbing to 4000 ft. Leave PAN NDB on QDR 233° (TR 233°), passing 3000 ft turn right to PAN NDB to be reached at 4000 ft.



<b>STRAIGHT-IN LANDING RWY 21</b>		<b>CIRCLE TO LAND</b>		<b>CIRCLING SECTORS</b>	MSA 25NM PAN NDB
OCA(H) 1600(1013)					
MDA(H) 1600(1013)		<b>MAX KTS</b>	<b>OCA(H)</b>	<b>MDA(H)</b>	3900
A	2250M	100	1600 (971)	2100 (1471)	
B		135		vis 3000M	