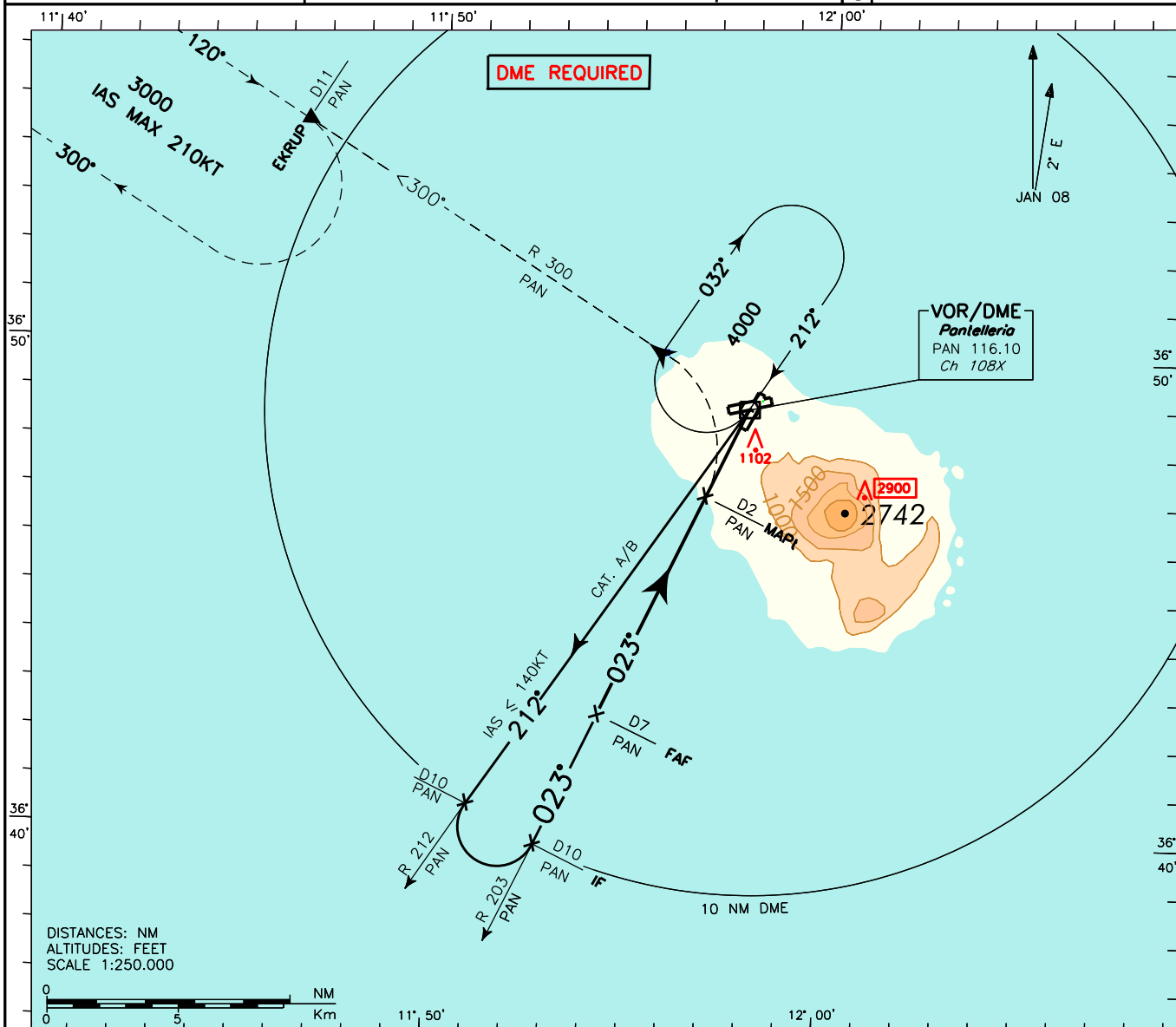


REMARK:

Final Approach Track off set 3° from RWY center line.
RWY center line intercepted 2348 m before THR03.

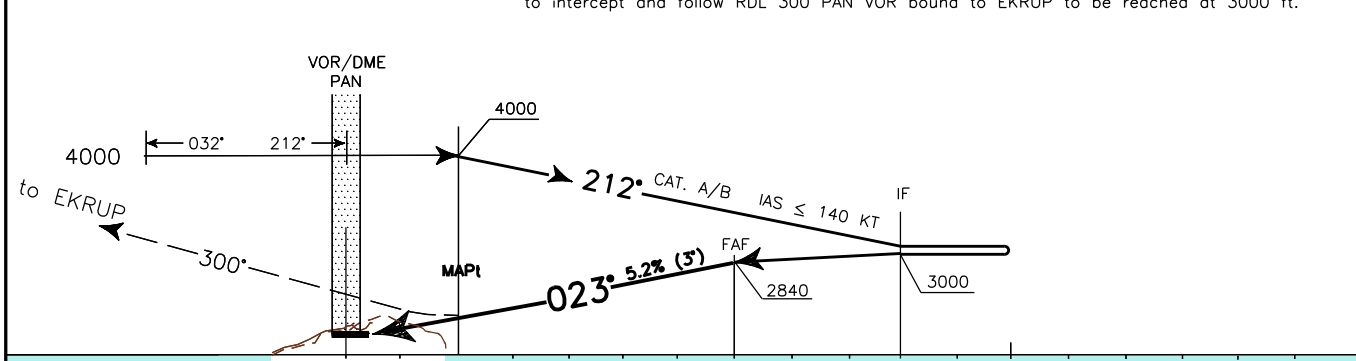
APP	Pantelleria Approach	119.350	AD ELEV	629	LICG	PANTELLERIA VOR RWY 03 (CAT A/B)
TWR	Pantelleria Tower	118.450				

DOC.8168-ED.5 2006 - AMDT. 4



TRANSITION ALT 5000

MISSED APPROACH: Not later than 2 NM before PAN DME climb to 3000 ft turning left, to intercept and follow RDL 300 PAN VOR bound to EKRUP to be reached at 3000 ft.



PAN DME	THR ELEV 617	D1	D2	D3	D4	D5	D6	D7	D8	D9	D10	D11	D12	D13	D14	D15	D16	D17	PAN DME
NM																			

STRAIGHT-IN LANDING RWY 26				CIRCLE TO LAND			CIRCLING SECTORS	GS	FT PER MIN	FAF-MAP1	MAP1-THR	DME PAN	ALT (HGT)	MSA 25 NM PAN VOR
OCA(H) 1600(983)				MAX KT	OCA(H)	MDA(H)								
MDA(H) 1600(983)				100	1600 (971)	2100 (1471)	VIS 3000M	80	425	3 : 45	1 : 21	6	2520 (1903)	
A	2250M							135				100	530	
B				120	635	2 : 30	0 : 54					4	1880 (1263)	
		140	740	2 : 09	0 : 46	3	1565 (948)							
		160	845	1 : 53	0 : 41	2	1245 (628)							