

DOC.8168-ED.5 2006 - AMDT.4

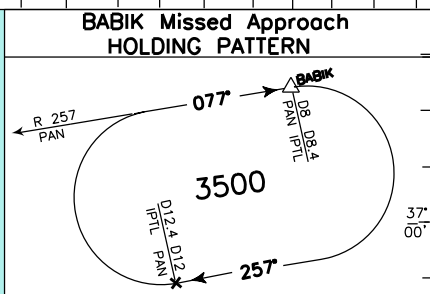
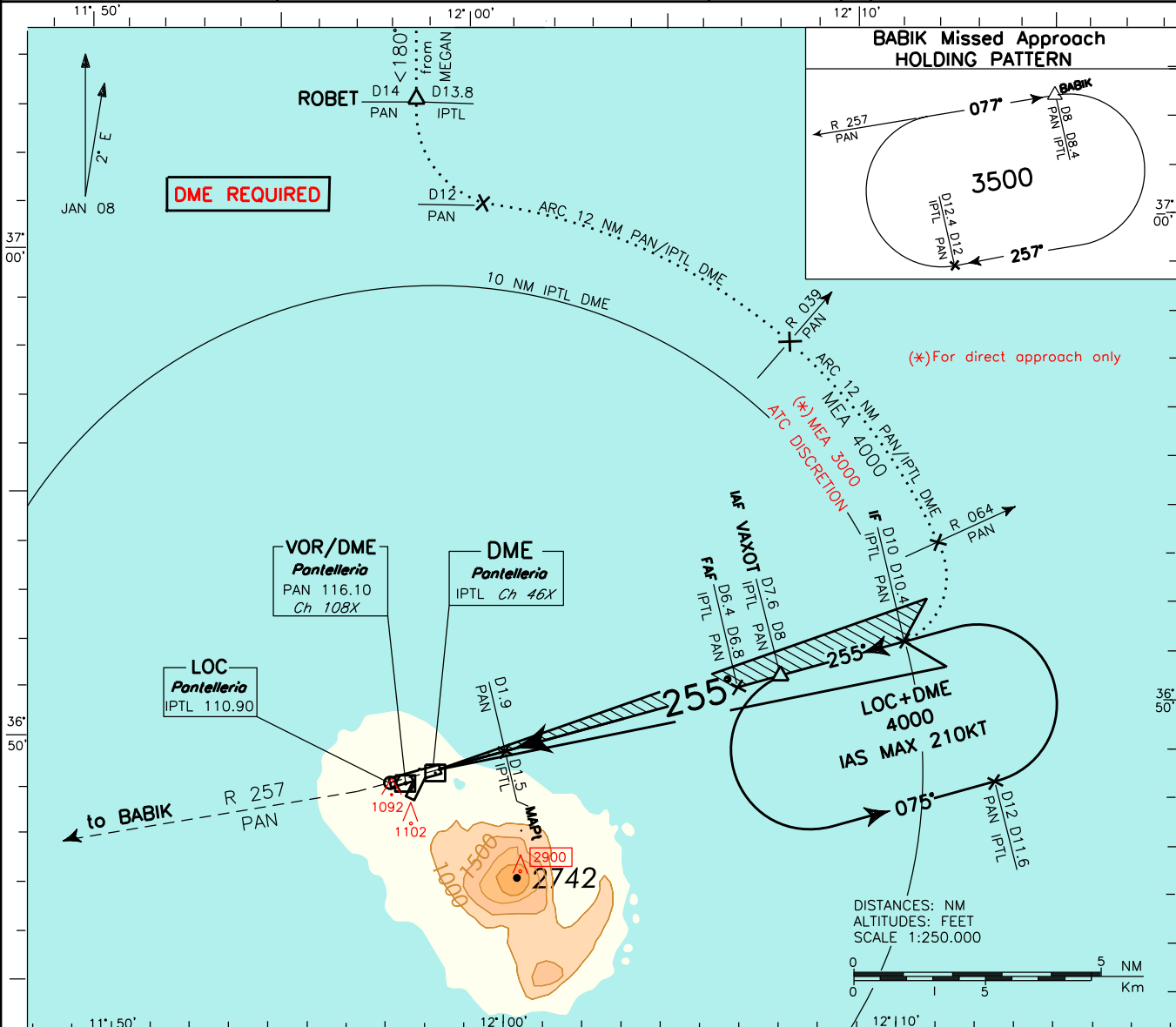
CHANGE: RENUMBERED PAGE

WARNING : Due to orographic and artificial obstacles PAPI indications not usable last 200M before THR

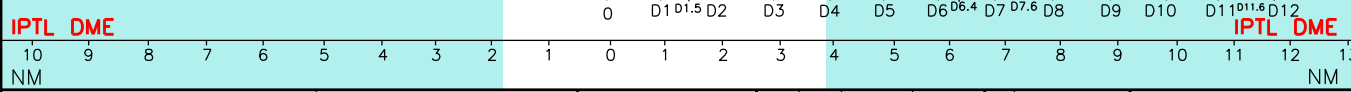
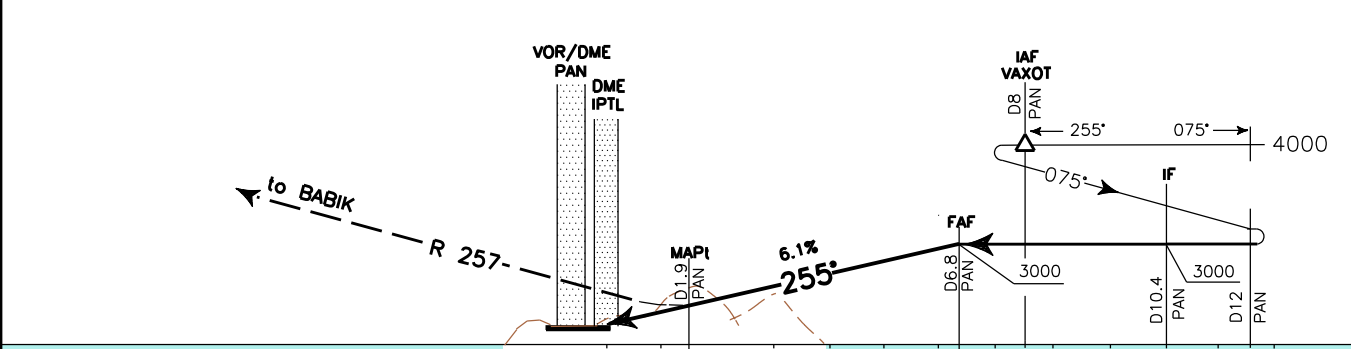
APP Pantelleria Approach **119.350**
TWR Pantelleria Tower **118.450**

AD ELEV
629

LICG
PANTELLERIA
LOC-Z RWY 26



TRANSITION ALT 5000 **MISSED APPROACH:** At 1.5 NM IPTL DME (1.9 NM PAN DME), climbing to 3500 ft proceed on TR 255° to intercept and follow RDL 257 PAN VOR bound to BABIK holding pattern to be reached at 3500 ft.



STRAIGHT-IN LANDING RWY 26				CIRCLE TO LAND				CIRCLING SECTORS				GS		FT PER MIN		FAF-MAP		MAP-THR		DME IPTL		ALT (MGT)		MSA 25NM PAN VOR	
OCA (OCH)	A	B	C	D	MAX HT	OCA(H)	MDA(H)	VIS	3000M	3600M	5400M	80	100	120	140	160	4.9 NM	1.46 NM	DME	1	2	3	4	5	6
LOC	1300 (706)					1600 (971)	2100 (1471)	3000M				80	100	120	140	160	4.9 NM	1.46 NM	DME	1	2	3	4	5	6
A	2250M				100	1600 (971)	2100 (1471)	3000M				80	100	120	140	160	4.9 NM	1.46 NM	DME	1	2	3	4	5	6
B	2250M				135	1600 (971)	2100 (1471)	3000M				80	100	120	140	160	4.9 NM	1.46 NM	DME	1	2	3	4	5	6
C	2700M				180	1700 (1071)	2100 (1471)	3600M				80	100	120	140	160	4.9 NM	1.46 NM	DME	1	2	3	4	5	6
D	3000M				205	1700 (1071)	2100 (1471)	5400M				80	100	120	140	160	4.9 NM	1.46 NM	DME	1	2	3	4	5	6