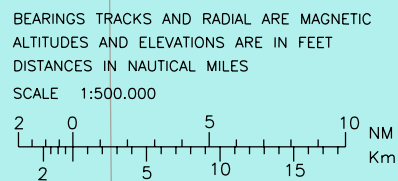
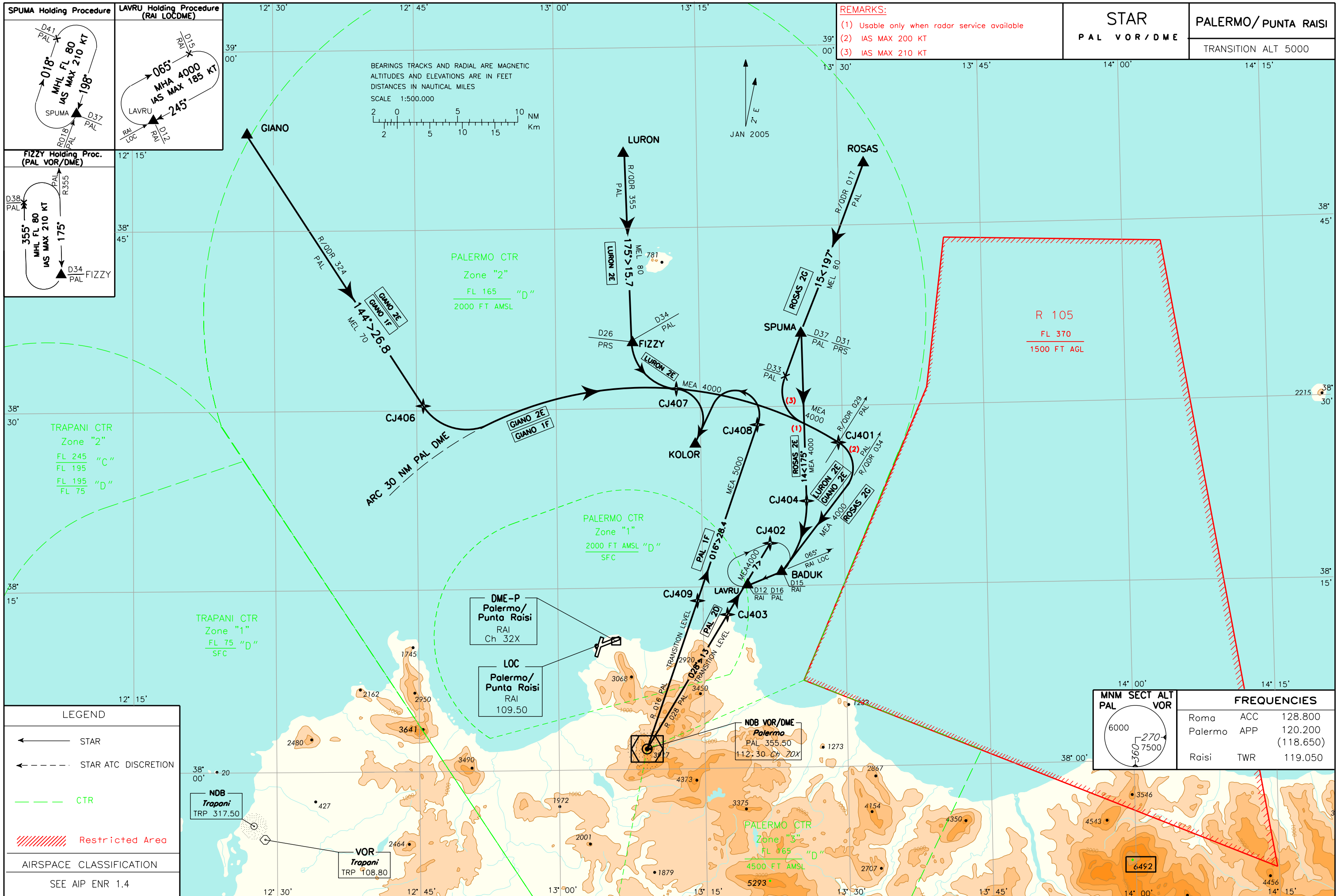


**REMARKS:**  
 (1) Usable only when radar service available  
 (2) IAS MAX 200 KT  
 (3) IAS MAX 210 KT

|             |  |                            |
|-------------|--|----------------------------|
| <b>STAR</b> |  | <b>PALERMO/PUNTA RAISI</b> |
| PAL VOR/DME |  |                            |
|             |  | TRANSITION ALT 5000        |



CHANGE: CHART MODIFIED



**LEGEND**

- STAR
- - - STAR ATC DISCRETION
- CTR
- ////// Restricted Area

**AIRSPACE CLASSIFICATION**  
 SEE AIP ENR 1.4

**NDB Trapani**  
 TRP 317.50

**VOR Trapani**  
 TRP 108.80

**DME-P Palermo/Punta Raisi**  
 RAI Ch 32X

**LOC Palermo/Punta Raisi**  
 RAI 109.50

**NDB VOR/DME Palermo**  
 PAL 355.50  
 112.30 Ch 20X

| MNM  | SECT | ALT  | VOR | FREQUENCIES |                       |
|------|------|------|-----|-------------|-----------------------|
| 6000 |      | 270  |     | Roma        | ACC 128.800           |
|      |      | 7500 |     | Palermo     | APP 120.200 (118.650) |
|      |      |      |     | Raisi       | TWR 119.050           |

**DESCRIZIONE STAR****GIANO 2E**

Procedere via GIANO-TR 144-CJ406, quindi virare a sinistra fino a stabilizzarsi su ARC 30 NM PAL DME fino al punto CJ401, quindi virare a destra (IAS MAX 200 kt durante la virata) su RDL/QDR 034 PAL VOR/NDB per il punto BADUK, quindi LAVRU.

MEL/MEA: GIANO-CJ406: FL 70; CJ406-ARC 30NM PAL DME-CJ401-BADUK-LAVRU: 4000 FT.

**GIANO 1F**

Procedere via GIANO-TR 144-CJ406, quindi virare a sinistra fino a stabilizzarsi su ARC 30 NM PAL DME fino al punto CJ407, quindi virare a destra per il punto KOLOR.

MEL/MEA: GIANO-CJ406: FL 70; CJ406-ARC 30 NM PAL DME-CJ407 - KOLOR: 5000 FT.

**LURON 2E**

Procedere via LURON-TR 175° (RDL/QDR 355 PAL VOR)-FIZZY, quindi virare a sinistra fino a stabilizzarsi su ARC 30 NM PAL DME fino al punto CJ401, quindi virare a destra (IAS MAX 200 kt durante la virata) su RDL/QDR 034 PAL VOR/NDB per il punto BADUK, quindi LAVRU.

MEL/MEA: LURON-FIZZY: FL 80; FIZZY-ARC 30 NM PAL DME-CJ401-BADUK-LAVRU: 4000 FT.

**PAL 2D**

Procedere via PAL VOR/NDB - TR 028° (RDL/QDR 028 PAL VOR/NDB)-CJ403-CJ402, quindi virare a destra (IAS MAX 185 kt durante la virata) per il punto BADUK, quindi LAVRU.

MEL/MEA: PAL VOR/NDB-CJ403:TRL; CJ403-CJ402-BADUK-LAVRU: 4000 FT.

**PAL 1F**

Procedere via PAL VOR/NDB - TR 016° (RDL/QDR 016 PAL VOR/NDB) - CJ408 quindi virare a sinistra (IAS MAX 230KT durante la virata) per il punto KOLOR.

MEL/MEA: PAL VOR/NDB-CJ409: TRL; CJ409-CJ408-KOLOR: 5000Ft

**ROSAS 2G**

ROSAS - TR 197° (RDL/QDR 017 PAL VOR/NDB) - SPUMA - RDL 017/33 NM PAL VOR/DME, quindi virare a sinistra fino a stabilizzarsi su ARC 30 NM PAL DME (IAS MAX 210 kt durante la virata) fino al punto CJ401, quindi virare a destra (IAS MAX 200 kt durante la virata) per il punto BADUK, quindi LAVRU.

MEL/MEA: ROSAS - SPUMA: FL80; SPUMA - ARC 30 NM PAL DME - CJ401-BADUK - LAVRU: 4000FT.

**ROSAS 2E**

ROSAS-SPUMA-CJ404-BADUK-LAVRU

MEL/MEA: ROSAS-SPUMA: FL 80; SPUMA-CJ404-BADUK-LAVRU: 4000FT

**STAR DESCRIPTION****GIANO 2E**

Proceed via GIANO-TR 144-CJ406, then turn left until joining ARC 30 NM PAL DME until CJ401, then turn right (IAS MAX 200 kt during turn) on RDL/QDR 034 PAL VOR/NDB bound to point BADUK, then LAVRU.

**GIANO 1F**

Proceed via GIANO-TR 144-CJ406, then turn left until joining ARC 30NM PAL DME until CJ407, then turn right bound to KOLOR.

**LURON 2E**

Proceed via LURON-TR 175° (RDL/QDR 355 PAL VOR)-FIZZY, then turn left until joining ARC 30 NM PAL DME until CJ401, then turn right (IAS MAX 200 kt during turn) on RDL/QDR 034 PAL VOR/NDB bound to BADUK, then LAVRU.

**PAL 2D**

Proceed via PAL VOR/NDB-TR 028° (RDL/QDR 028 PAL VOR/NDB) -CJ403-CJ402, then turn right (IAS MAX 185 kt during turn) bound to BADUK, then LAVRU.

**PAL 1F**

Proceed via PAL VOR/NDB-TR 016° (RDL/QDR 016 PAL VOR/NDB) -CJ408 then turn left (IAS MAX 230KT during turn) bound to KOLOR.

**ROSAS 2G**

ROSAS - TR 197° (RDL/QDR 017 PAL VOR/NDB) - SPUMA - RDL 017/33 NM PAL VOR/DME, then turn left until joining ARC 30 NM PAL DME (IAS MAX 210KT during turn) until CJ401, then turn right (IAS MAX 200 kt during turn) bound to BADUK, then LAVRU.

| Path Terminator | Waypoint Name | Fly Over | Track °Mag | Turn Direction | Altitude Constraint | Speed Limit | Recommended Navaid        | Bearing/Range to Navaid          | Navigation Performance |
|-----------------|---------------|----------|------------|----------------|---------------------|-------------|---------------------------|----------------------------------|------------------------|
| IF              | ROSAS         | -        | -          | -              | -                   | -           | -                         | -                                | B-RNAV (1)             |
| TF              | SPUMA         | -        | 197°       | L              | +FL80               | -           | -                         | -                                | B-RNAV (1)             |
| TF              | CJ404         | -        | 175°       | R              | +4000               | 210KT       | -                         | -                                | B-RNAV (1)             |
| TF              | BADUK         | -        | 245°       | -              | +4000               | 210KT       | PAL VOR/DME<br>RAI LOCDME | RDL/QDR<br>034/D18.5<br>065°/D15 | Conventional           |
| HM              | LAVRU         | Y        | 245°       | R              | +4000               | 200KT       | RAI LOCDME                | 065°/D12                         | Conventional           |

(1) P-RNAV Recommended

| Waypoint | Latitude  | Longitude  |
|----------|-----------|------------|
| LAVRU    | N38154821 | E013210891 |
| BADUK    | N38165891 | E013244102 |
| CJ401    | N38274831 | E013301300 |
| CJ402    | N38191965 | E013231072 |
| CJ403    | N38132020 | E013181941 |
| CJ404    | N38225396 | E013265742 |
| CJ406    | N38300715 | E012461508 |
| CJ407    | N38320078 | E013125835 |
| CJ408    | N38290938 | E013213637 |
| CJ409    | N38142634 | E013153842 |