

ICAO - INSTRUMENT APPROACH CHART

AD 2 LICJ 5-11

WARNING: Landing on RWY 02 is allowed HJ in VMC only. Landing on RWY 02 is forbidden HN.
WARNING: For typographical reasons the hazard beacons located South of AD are not represented.

APP *Palermo Approach*
 120.200
Palermo Radar
 120.200 (118.650)

TWR *Raisi Tower*
 119.050

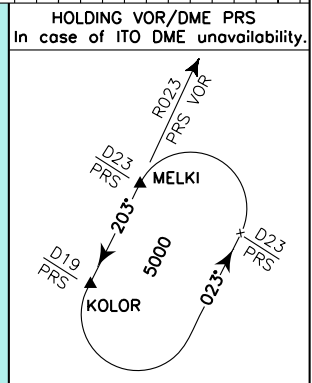
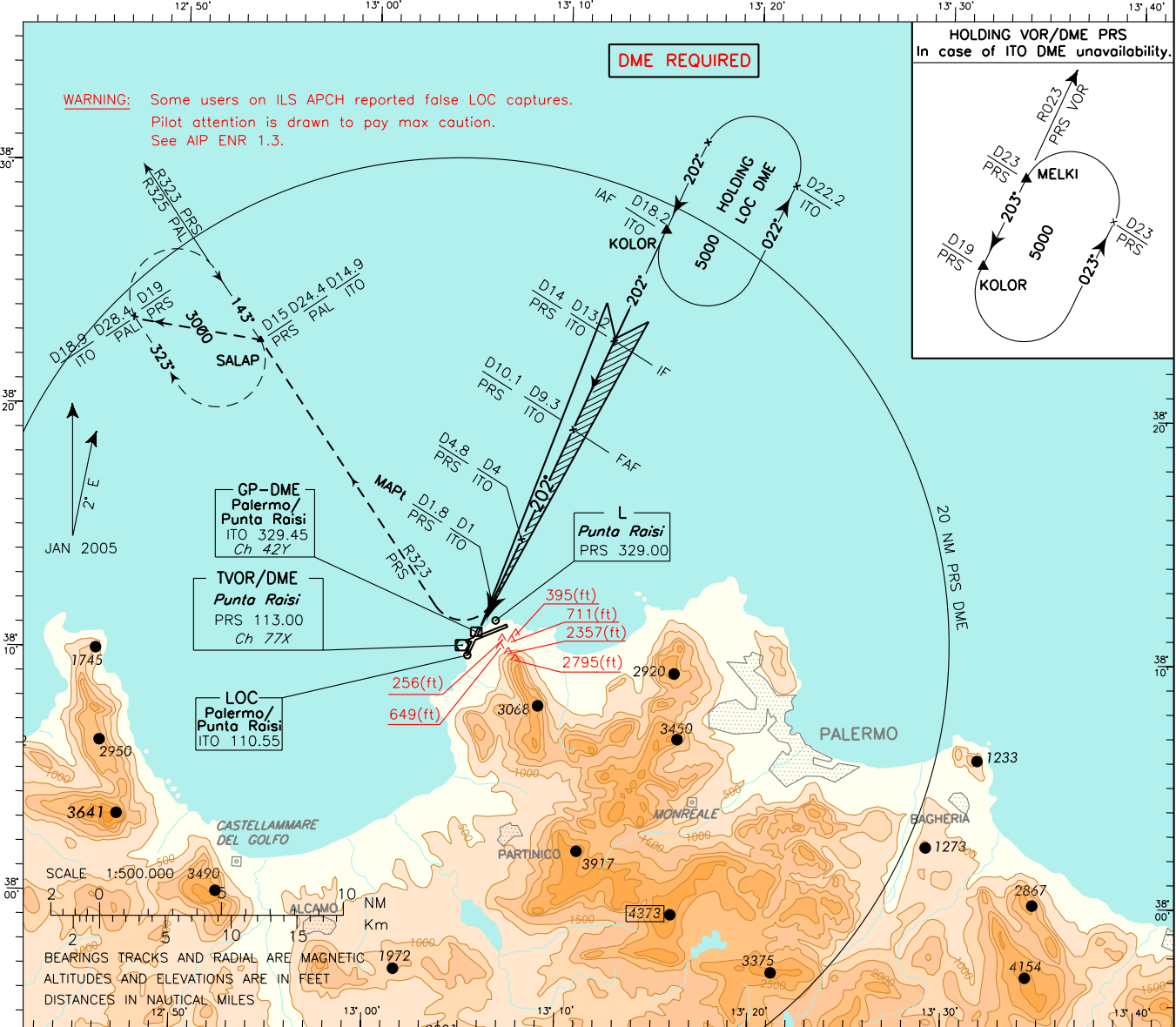
AD ELEV
 65

L
 I
 C
 J

PALERMO/PUNTA RAISI
 ILS-Z RWY 20

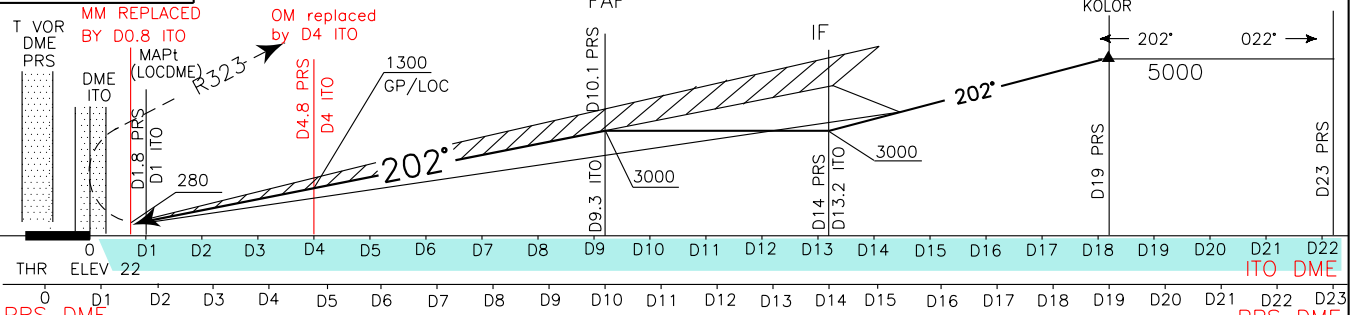
DOC.8168-ED.4-1993-AMDT 12

CHANGE: RADIO AID REQUIRED MODIFIED



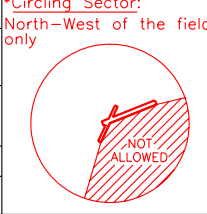
TRANSITION ALT 5000 **MISSED APPROACH:** As soon as possible turn right on RDL 323 PRS VOR (RDL 325 PAL VOR) climbing to 3000 ft and proceeding to SALAP holding pattern

RDH 17.37 M
 GP 3°
 LOC DME 5.2%



THR 0 D1 D2 D3 D4 D5 D6 D7 D8 D9 D10 D11 D12 D13 D14 D15 D16 D17 D18 D19 D20 D21 D22 D23 ITO DME PRS DME

| OCA (OCH) | A | B | C | D |
|----------------------|---------------|----------|----------|----------|
| STRAIGHT IN APPROACH | ILS 345(323) | 355(333) | 365(343) | 375(353) |
| | LOC 450 (428) | | | |
| CIRCLING (*) | 1000 (935) | | | |



| FT PER MIN | GS | 4 ITO-MAPT 3.00 NM | MAPt-THR 0.84 NM | ALT(HGT) | MNM SECT ALT PRS | VOR |
|------------|-----|--------------------|------------------|--------------|------------------|-----|
| 530 | 100 | 1 : 48 | 0 : 30 | 6 1940(1918) | | |
| 640 | 120 | 1 : 30 | 0 : 25 | 5 1620(1598) | | |
| 740 | 140 | 1 : 17 | 0 : 22 | 4 1300(1278) | | |
| 850 | 160 | 1 : 08 | 0 : 19 | 3 980(958) | | |
| 950 | 180 | 1 : 00 | 0 : 17 | 2 660(638) | | |

