

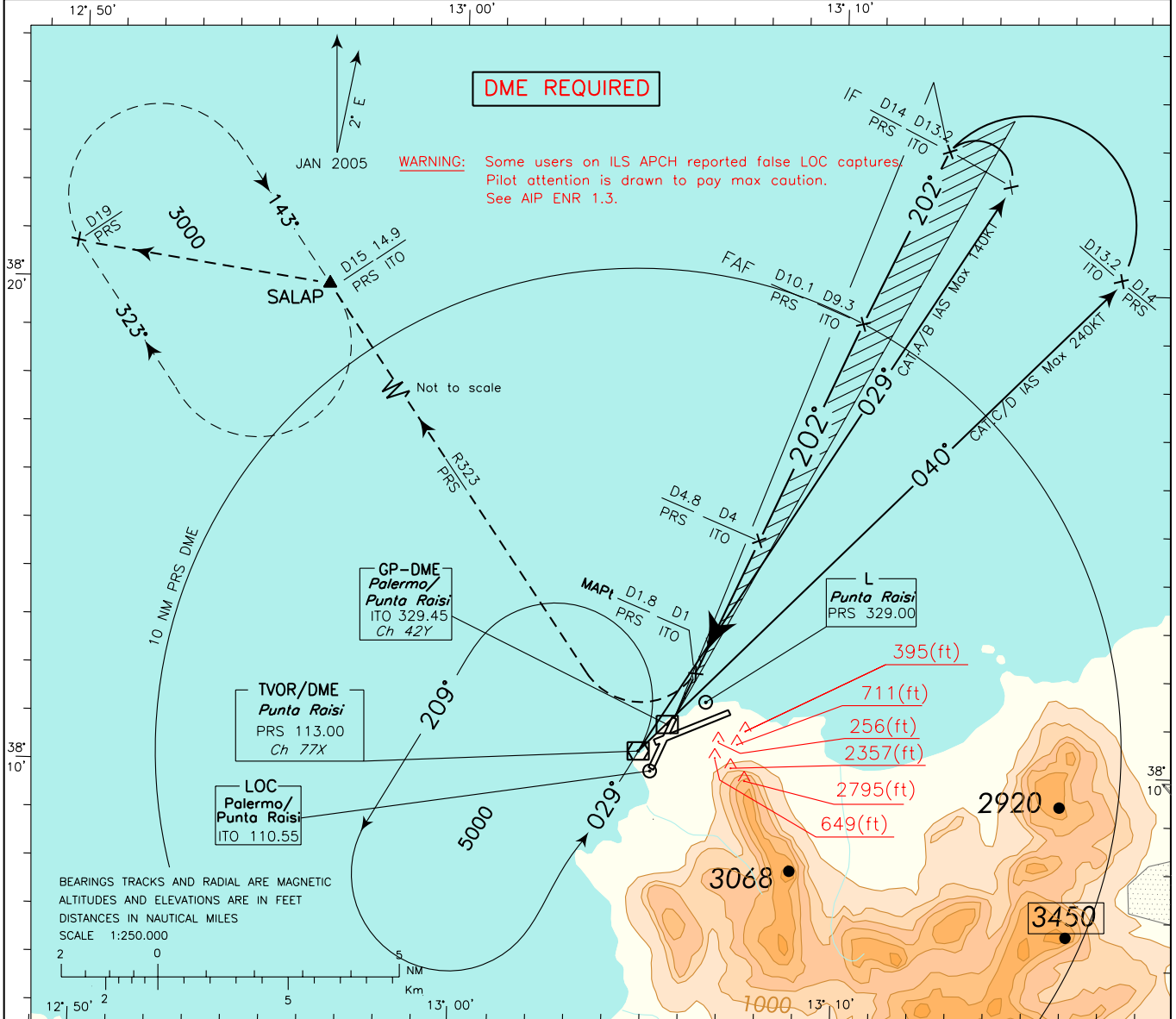
ICAO - INSTRUMENT APPROACH CHART

AD 2 LICJ 5-13

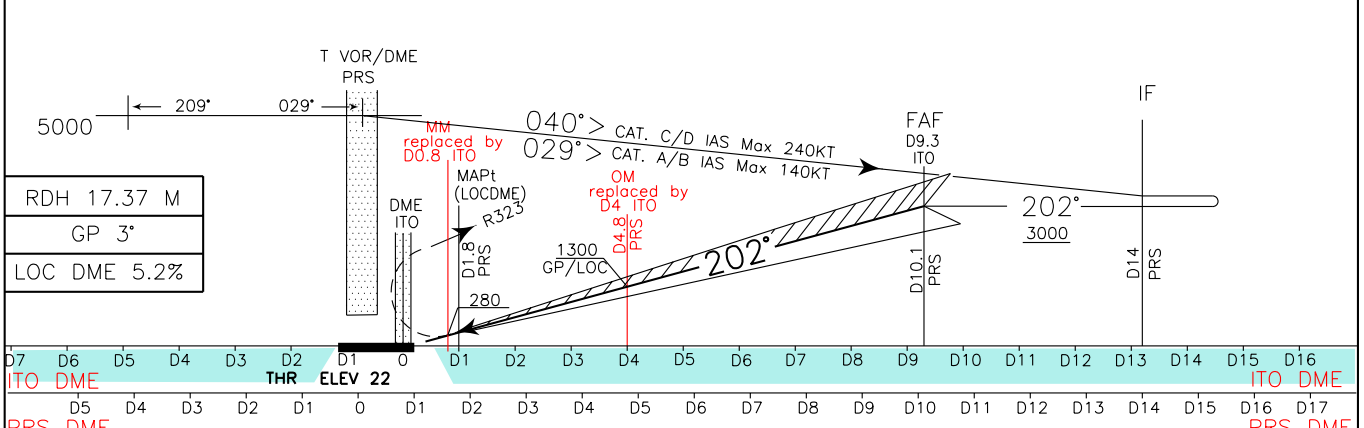
DOC.8168-ED.4-1993-AMDT 12

CHANGE: RADIO AID REQUIRED MODIFIED

<p>WARNING: Landing on RWY 02 is allowed HJ in VMC only. Landing on RWY 02 is forbidden HN. WARNING: For typographical reasons the hazard beacons located South of AD are not represented.</p>	<p>APP <i>Palermo Approach</i> 120.200</p>	<p>TWR <i>Raisi Tower</i> 119.050</p>	<p>AD ELEV 65</p>	<p>L C J</p>	<p>PALERMO/PUNTA RAISI ILS-Y RWY 20</p>
	<p>Palermo Radar 120.200 (118.650)</p>				



TRANSITION ALT 5000 **MISSED APPROACH:** As soon as possible turn right to join and follow RDL 323 PRS VOR climbing to 3000 ft and proceed to SALAP holding pattern.



<p>RDH 17.37 M</p> <p>GP 3°</p> <p>LOC DME 5.2%</p>		<p>5000</p> <p>209°</p> <p>029°</p> <p>040°</p> <p>029°</p> <p>202°</p> <p>202°</p> <p>3000</p>				<p>IF</p>					
<p>D7 D6 D5 D4 D3 D2 D1 D0 D1 D2 D3 D4 D5 D6 D7 D8 D9 D10 D11 D12 D13 D14 D15 D16</p> <p>ITO DME</p>		<p>THR ELEV 22</p>		<p>D1 D2 D3 D4 D5 D6 D7 D8 D9 D10 D11 D12 D13 D14 D15 D16 D17</p> <p>PRS DME</p>							
<p>OCA (OCH)</p>	<p>A</p>	<p>B</p>	<p>C</p>	<p>D</p>	<p>*Circling Sector: North-West of the field only</p>	<p>FT PER MIN</p>	<p>GS</p>	<p>D4 ITO-MAPt</p>	<p>MAPt-THR</p>	<p>ALT(HGT)</p>	<p>MNM SECT ALT PRS VOR</p>
<p>STRAIGHT IN APPROACH</p>	<p>ILS</p>	<p>345(323)</p>	<p>355(333)</p>	<p>365(343)</p>	<p>375(353)</p>	<p>530</p>	<p>100</p>	<p>1 : 48</p>	<p>0 : 30</p>	<p>6 1940(1918)</p>	
	<p>LOC</p>	<p>450 (428)</p>				<p>640</p>	<p>120</p>	<p>1 : 30</p>	<p>0 : 25</p>	<p>5 1620(1598)</p>	
	<p>CIRCLING (*)</p>	<p>1000 (935)</p>				<p>740</p>	<p>140</p>	<p>1 : 17</p>	<p>0 : 22</p>	<p>4 1300(1278)</p>	
						<p>850</p>	<p>160</p>	<p>1 : 08</p>	<p>0 : 19</p>	<p>3 980(958)</p>	
						<p>950</p>	<p>180</p>	<p>1 : 00</p>	<p>0 : 17</p>	<p>2 660(638)</p>	