

ICAO - INSTRUMENT APPROACH CHART

AD 2 LICJ 5-15

DOC.8168-ED.4-1993-AMDT 12

**WARNING:** Landing on RWY 02 is allowed HJ in VMC only. Landing on RWY 02 is forbidden HN.  
**WARNING:** For typographical reasons the hazard beacons located South of AD are not represented.

APP Palermo Approach  
 120.200  
 Palermo Radar  
 120.200 (118.650)

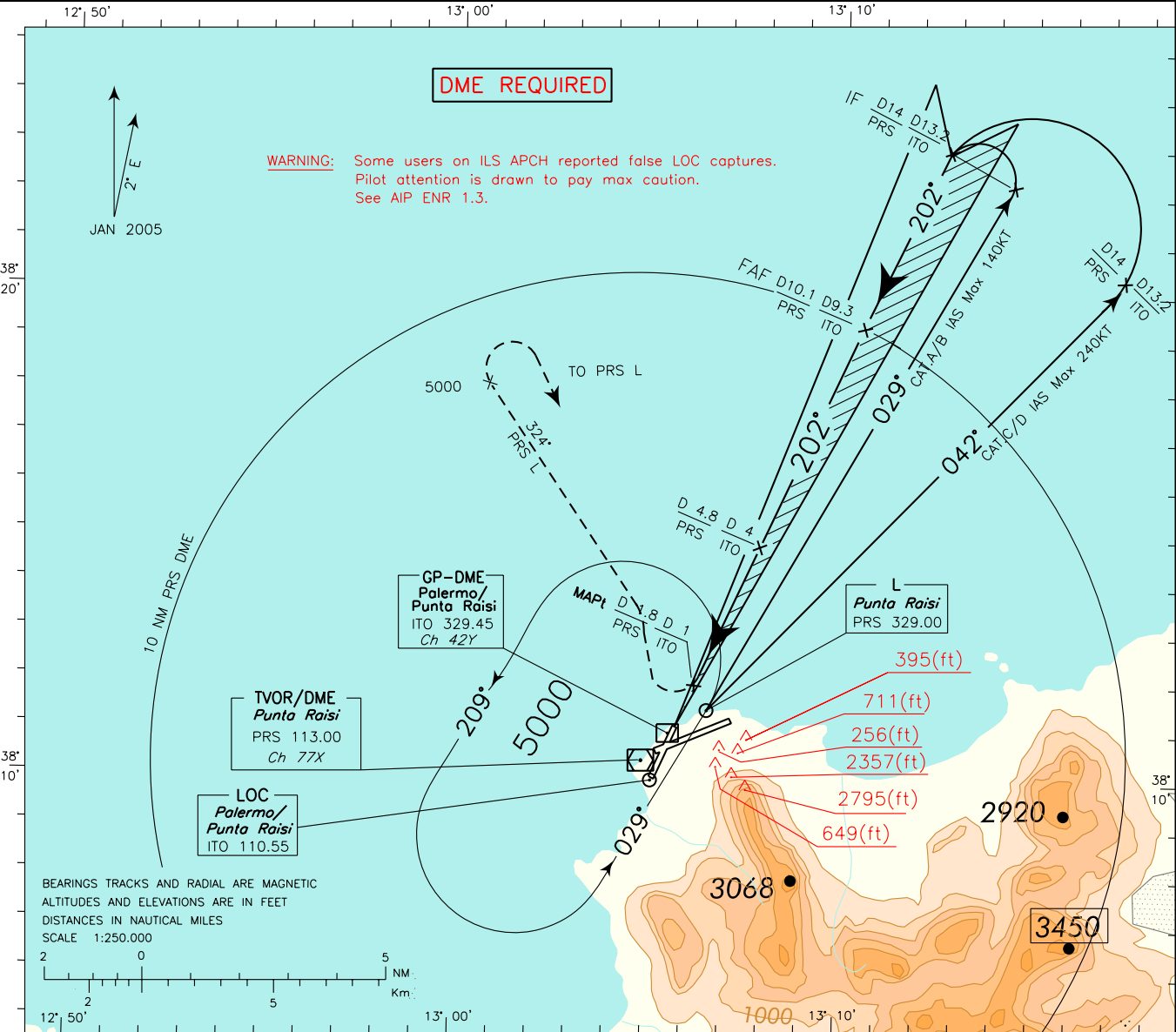
TWR Raisi Tower  
 119.050

AD ELEV  
 65

LICJ

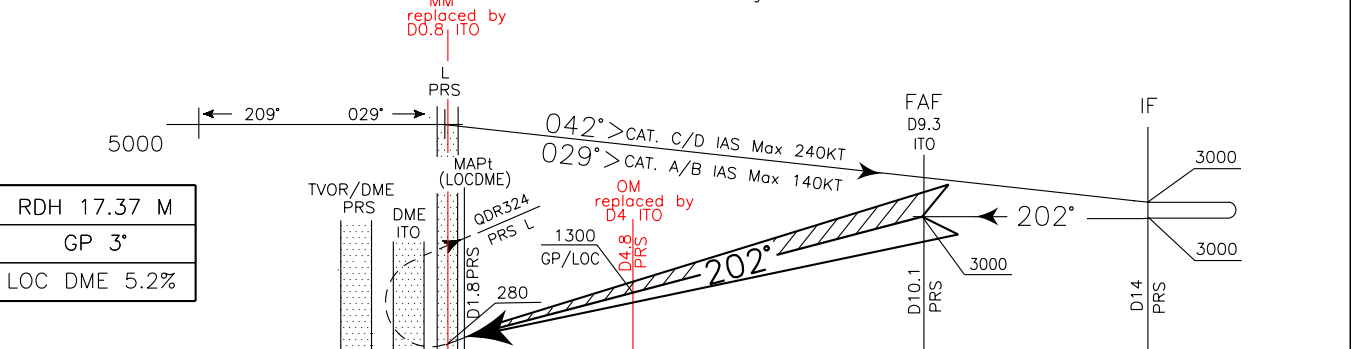
PALERMO/PUNTA RAISI  
 ILS-X RWY 20

CHANGE: RADIO AID REQUIRED MODIFIED



**TRANSITION ALT 5000**

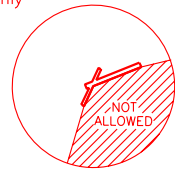
**MISSED APPROACH:** As soon as possible turn right to join QDR 324° PRS L climbing to 5000 ft. At 5000 ft turn right to PRS L.



D7	D6	D5	D4	D3	D2	D1	0	D1	D2	D3	D4	D5	D6	D7	D8	D9	D10	D11	D12	D13	D14	D15	D16
ITO DME												ITO DME											
D6	D5	D4	D3	D2	D1	0	D1	D2	D3	D4	D5	D6	D7	D8	D9	D10	D11	D12	D13	D14	D15	D16	D17
PRS DME												PRS DME											

OCA (OCH)		A	B	C	D
STRAIGHT IN APPROACH	ILS	345(323)	355(333)	365(343)	375(353)
	LOC	450 (428)			
CIRCLING (*)		1000 (935)			

\*Circling Sector: North-West of the field only



FT PER MIN	GS	D4 ITO-MAPT 3.00 NM	MAPt-THR 0.84 NM	I TO	ALT(HGT)
530	100	1 : 48	0 : 30	6	1940(1918)
640	120	1 : 30	0 : 25	5	1620(1598)
740	140	1 : 17	0 : 22	4	1300(1278)
850	160	1 : 08	0 : 19	3	980(958)
950	180	1 : 00	0 : 17	2	660(638)

