

ICAO - INSTRUMENT APPROACH CHART

AD 2 LICJ 5-17

WARNING: Landing on RWY 02 is allowed HJ in VMC only. Landing on RWY 02 is forbidden HN.
WARNING: For topographical reasons the hazard beacons located South of AD are not represented.

APP *Palermo Approach*
 120.200
 Palermo Radar
 120.200 (118.650)

TWR *Raisi Tower*
 119.050

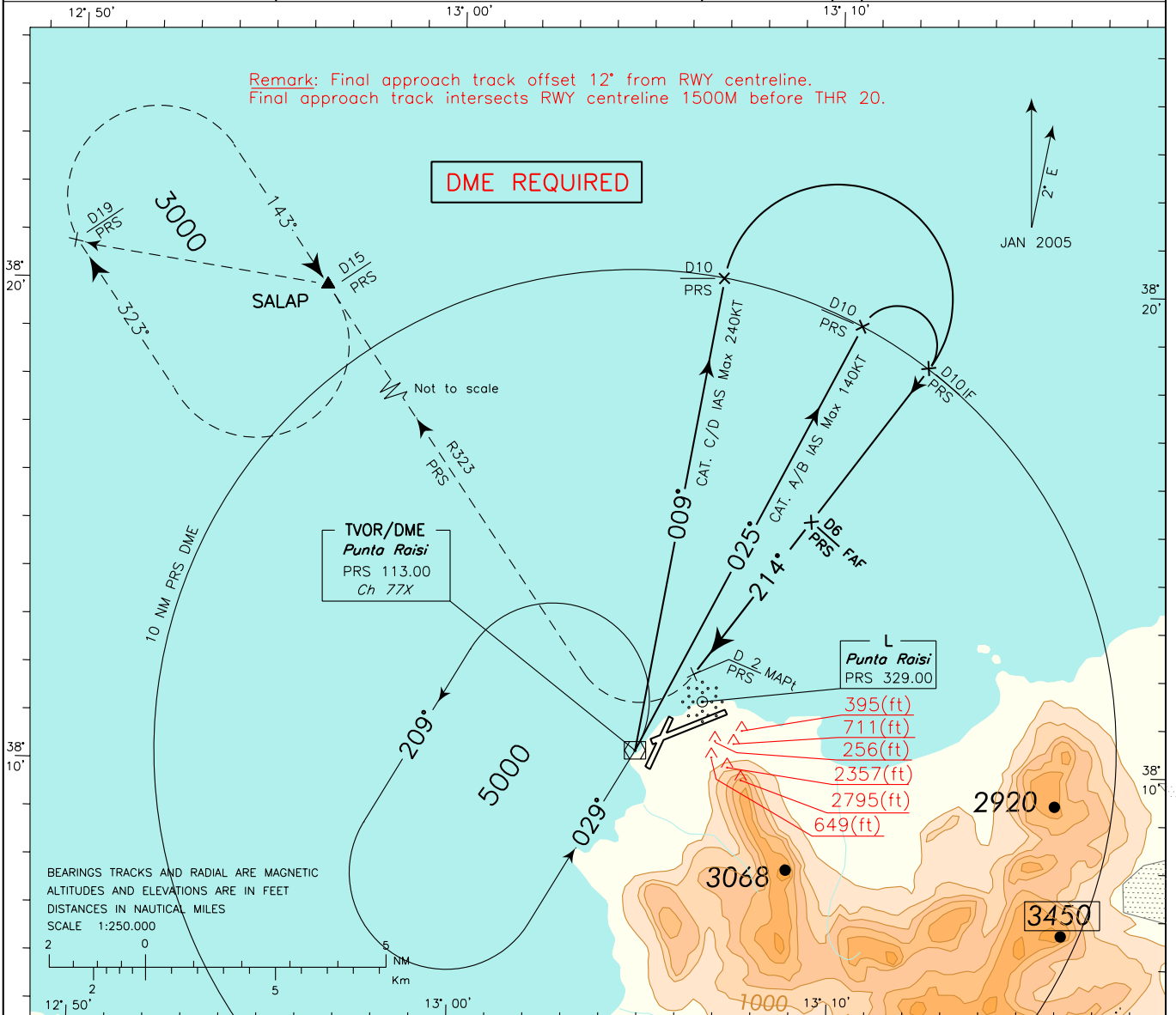
AD ELEV
 65

L
 C
 J

PALERMO/PUNTA RAISI
 VOR-Z
 RWY 20

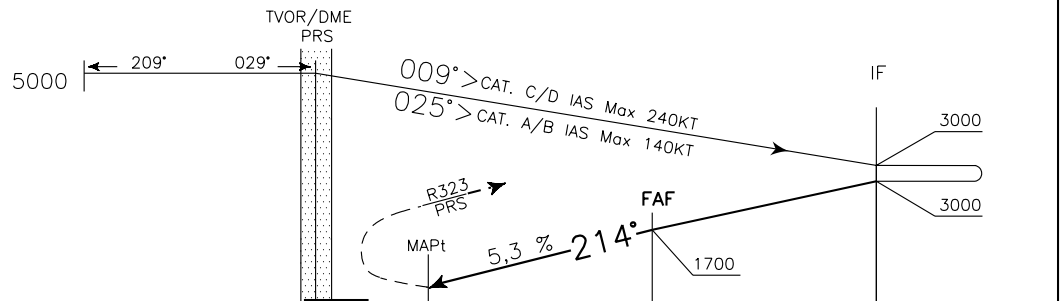
DOC.8168-ED.4-1993-AMDT 12

CHANGE: RADIO AID REQUIRED MODIFIED



TRANSITION ALT 5000

MISSED APPROACH: At 2 NM before PRS VOR DME turn right to join and follow RDL 323 VOR PRS climbing to 3000 Ft and proceed to SALAP Holding pattern.



D10	D9	D8	D7	D6	D5	D4	D3	D2	D1	THR	D1	D2	D3	D4	D5	D6	D7	D8	D9	D10	D11	D12	D13
PRS DME											PRS DME												
11 NM											12 NM												

OCA (OCH)		A	B	C	D
STRAIGHT IN APPROACH	VORDME	500 (478)			
CIRCLING (*)		1000 (935)			

*Circling Sector: North-West of the field only	FT PER MIN	GS	FAF-MAPt	MAPt-THR	ALT(HGT)
	506	100	2 : 24	0 : 36	
	608	120	2 : 00	0 : 30	6 1700(1678)
	709	140	1 : 43	0 : 26	5 1380(1358)
	810	160	1 : 30	0 : 23	4 1060(1038)
	911	180	1 : 20	0 : 20	3 740(718)

