

ICAO - INSTRUMENT APPROACH CHART

AD 2 LICJ 5-21

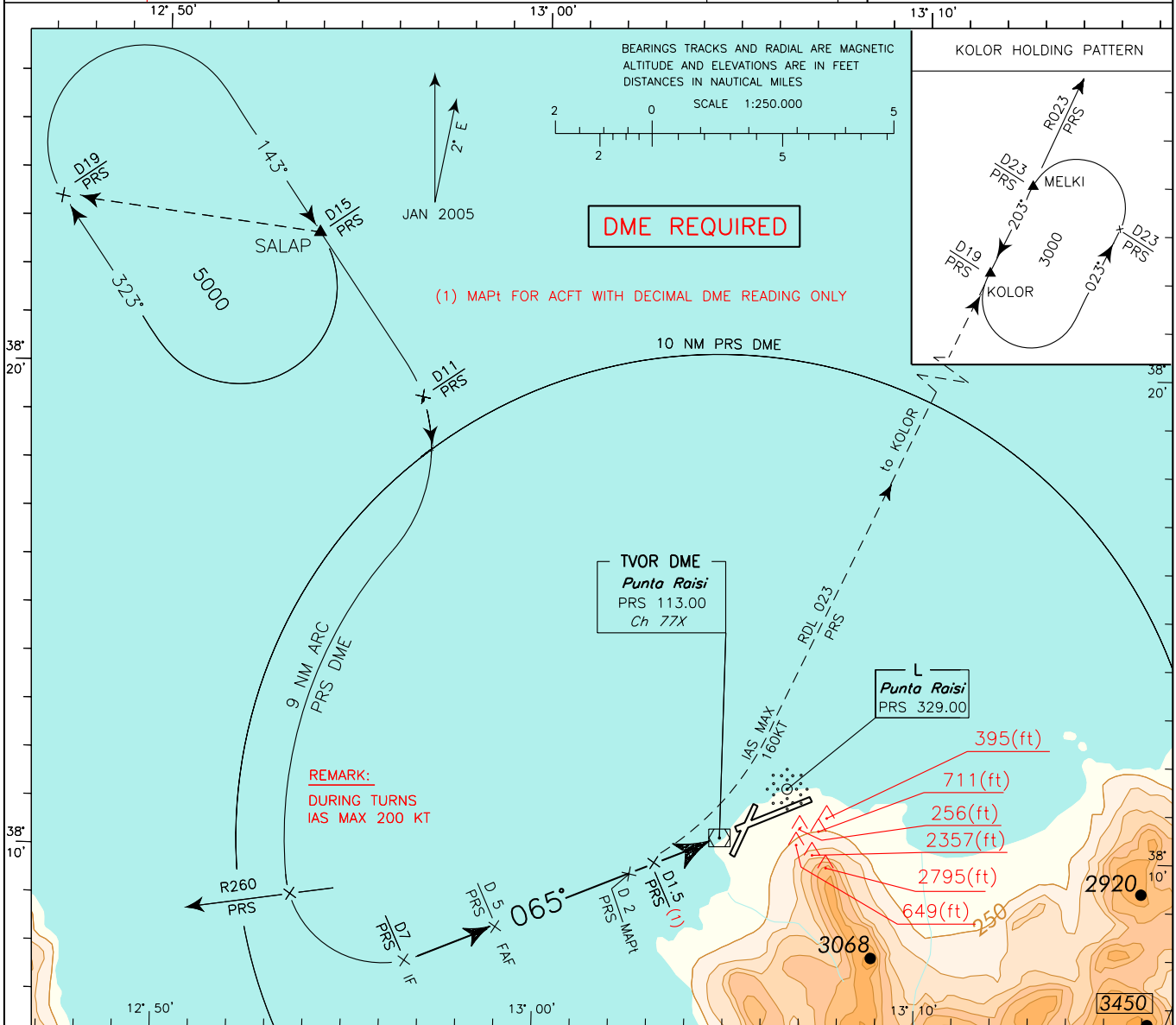
WARNING: Landing on RWY 02 is allowed HJ in VMC only. Landing on RWY 02 is forbidden HN.
WARNING: For typographical reasons the hazard beacons located South of AD are not represented.

APP *Palermo Approach* TWR *Raisi Tower*
 120.200 119.050
Palermo Radar
 120.200 (118.650)

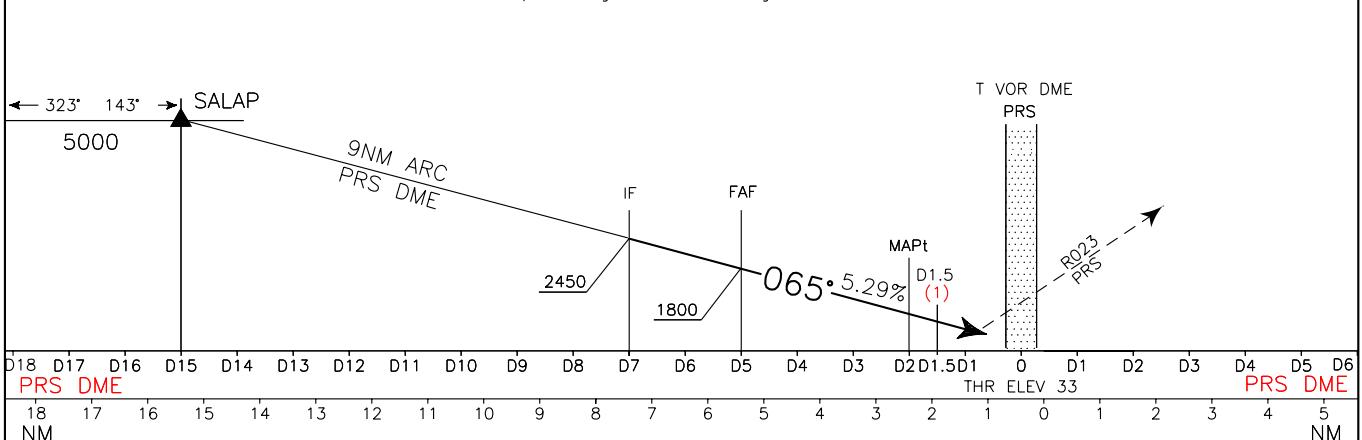
AD ELEV 65
 L I C J
 PALERMO/PUNTA RAISI
 VOR-Z RWY 07

DOC.8168-ED.4-1993-AMDT 12

CHANGE: RADIO AID REQUIRED



TRANSITION ALT 5000 MISSED APPROACH: At MAPt turn left (IAS MAX 160KT) to join and follow RDL 023 VOR PRS climbing to 3000FT and proceeding to KOLOR Holding Pattern.



OCA (OCH)		A	B	C	D	* Circling Sector: North-West of the field only.	FT PER MIN	GS	FAF-MAPt	MAPt-THR	ALT(HGT)	MNM SECT	ALT
STRAIGHT IN APPROACH	VORDME	840 (807)						536	100	2 : 06	1 : 08	5 1800(1767)	5000
	VORDME (Decimal DME Reading)	710 (677) (1)					643	120	1 : 45	0 : 57	4 1480(1447)		
CIRCLING (*)		1000 (935)					750	140	1 : 30	0 : 49	3 1160(1127)	5500	7000
							857	160	1 : 19	0 : 43	2 840(807)		
							964	180	1 : 10	0 : 38			