

ICAO – INSTRUMENT APPROACH CHART

AD 2 LICJ 5-23

WARNING: Landing on RWY 02 is allowed HJ in VMC only. Landing on RWY 02 is forbidden HN.
WARNING: For typographical reasons the hazard beacons located South of AD are not represented.

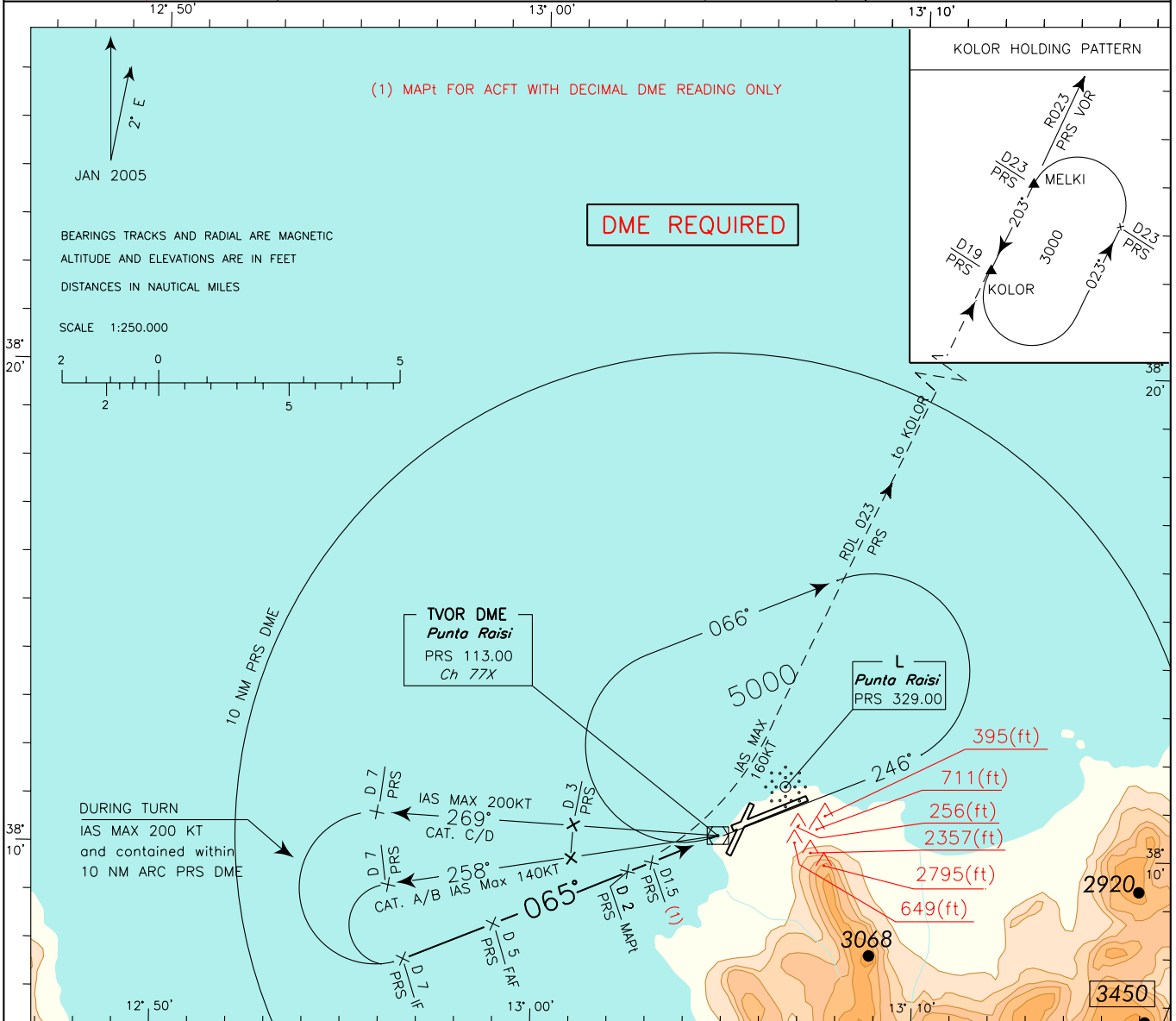
APP *Palermo Approach* TWR *Raisi Tower*
 120.200 119.050
Palermo Radar
 120.200 (118.650)

AD ELEV
 65

PALERMO/PUNTA RAISI
 VOR-Y RWY 07

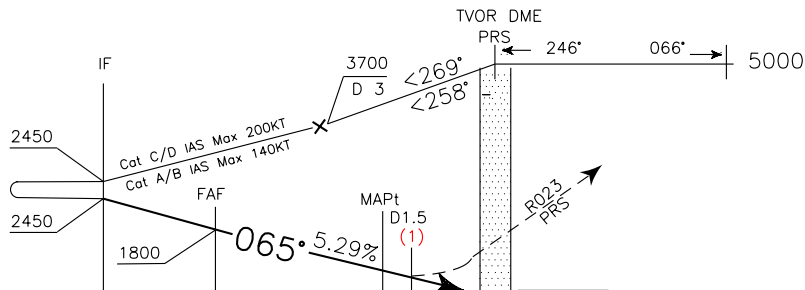
DOC.8168-ED.4-1993-AMDT 12

CHANGE: RADIO AID REQUIRED



TRANSITION ALT 5000

MISSED APPROACH: At MAPt turn left (IAS MAX 160KT) to join and follow RDL 023 VOR PRS climbing to 3000FT and proceeding to KOLOR Holding Pattern.



D12	D11	D10	D9	D8	D7	D6	D5	D4	D3	D1.5D1	0	D1	D2	D3	D4	D5	D6	D7	D8	D9	D10	D11
PRs DME											PRs DME											
12											11											
NM											NM											

OCA (OCH)		A	B	C	D	* Circling Sector: North-West of the field only.	FT PER MIN	GS	FAF-MAPt 3.5 NM	MAPt-THR 1.9 NM	ALT(HGT)	MNM SECT ALT PRs VOR	
STRAIGHT IN APPROACH	VORDME	840 (807)						536	100	2 : 06	1 : 08	5 1800(1767)	
	VORDME (Decimal DME Reading)	710 (677) (1)						643	120	1 : 45	0 : 57	4 1480(1447)	
								750	140	1 : 30	0 : 49	3 1160(1127)	
					857	160		1 : 19	0 : 43	2 840(807)			
CIRCLING (*)		1000 (935)					964	180	1 : 10	0 : 38			