

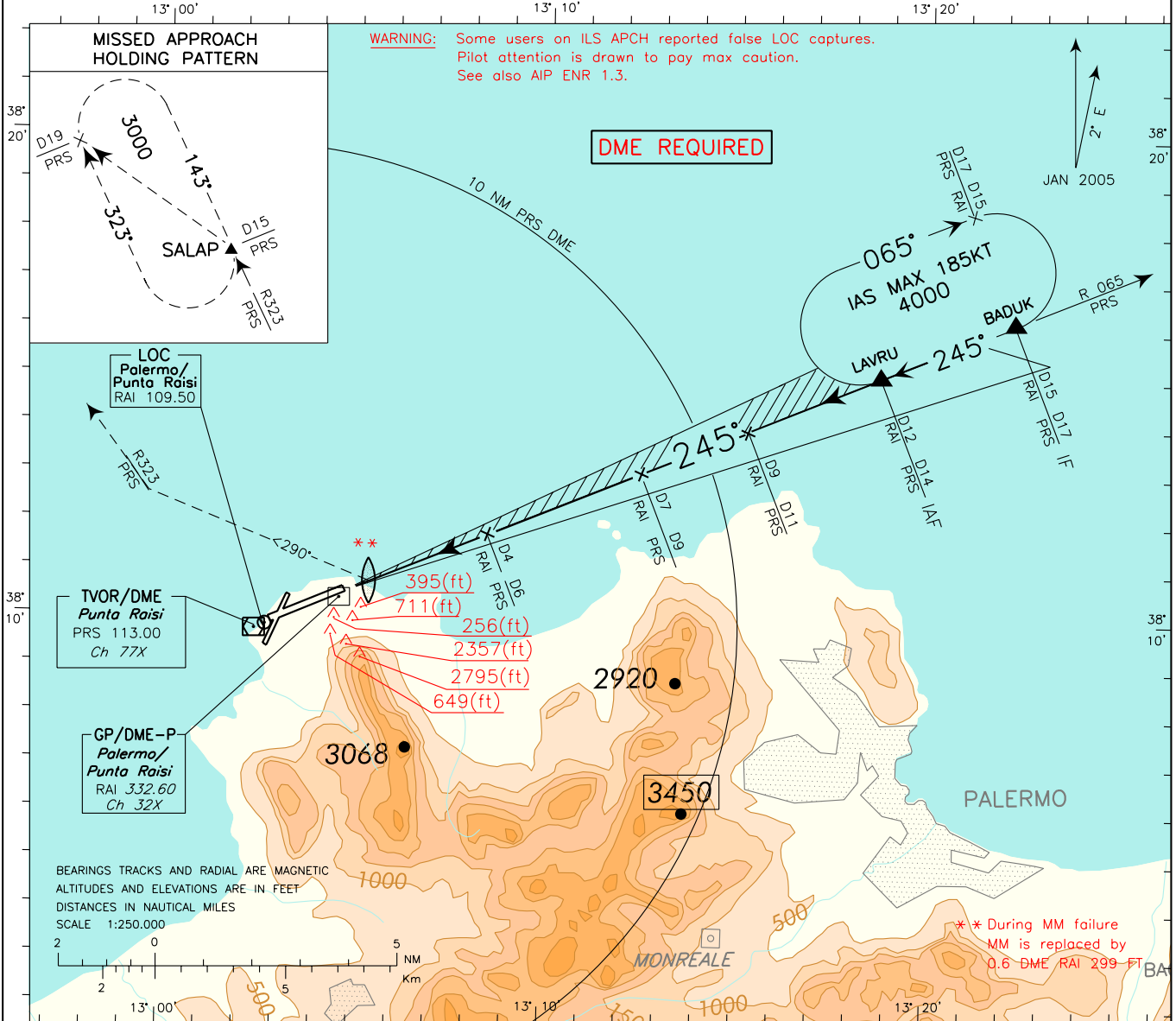
ICAO - INSTRUMENT APPROACH CHART

AD 2 LICJ 5-3

DOC.8168-ED.4-1993-AMDT 12

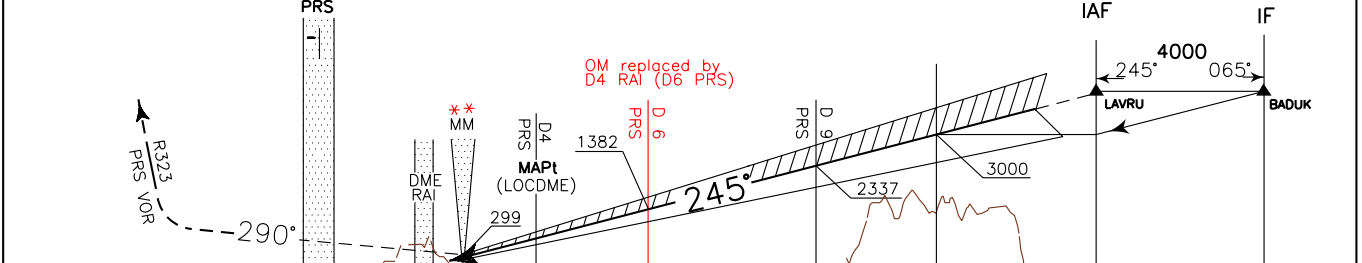
CHANGE: RADIO AID REQUIRED

<p>WARNING: Landing on RWY 02 is allowed HJ in VMC only. Landing on RWY 02 is forbidden HN. WARNING: For typographical reasons the hazard beacons located South of AD are not represented.</p>	<p>APP Palermo Approach 120.200 Palermo Radar 120.200 (118.650)</p>	<p>TWR Raisi Tower 119.050</p>	<p>AD ELEV 65</p>	<p>LICJ PALERMO/PUNTA RAISI ILS-Z RWY 25</p>
---	---	--	---	--



TRANSITION ALT 5000 MISSED APPROACH: As soon as possible turn right on TR 290° to join and follow RDL 323 PRS VOR DME, climbing to 3000 ft and proceed to SALAP Holding pattern

RDH 17.50 M
GP 3°



D7	D6	D5	D4	D3	D2	D1	D1	D2	D3	D4	D5	D6	D7	D8	D9	D10	D11	D12	D13	D14	D15	D16	
RAI DME				THR	ELEV 50																RAI DME		
	D5	D4	D3	D2	D1	D1	D2	D3	D4	D5	D6	D7	D8	D9	D10	D11	D12	D13	D14	D15	D16	D17	D18
	PRS DME																					PRS DME	

OCA (OCH)		A	B	C	D	*Circling Sector: North-West of the field only	FT PER MIN	GS	D4 RAI-MAPT 2.00 NM	MAPT-THR 1.85 NM	ALT(HGT)	MNM SECT ALT	
STRAIGHT IN APPROACH	ILS	500 (450)										PRS	VOR
	LOC DME	750 (700)					530	100	1 : 12	1 : 07	6 2018(1968)		
							636	120	1 : 00	0 : 56	5 1700(1650)		
						741	140	0 : 52	0 : 48	4 1382(1332)			
						847	160	0 : 45	0 : 42	3 1063(1013)			
	CIRCLING (*)	1000 (935)					953	180	0 : 40	0 : 37	2 744(694)		