

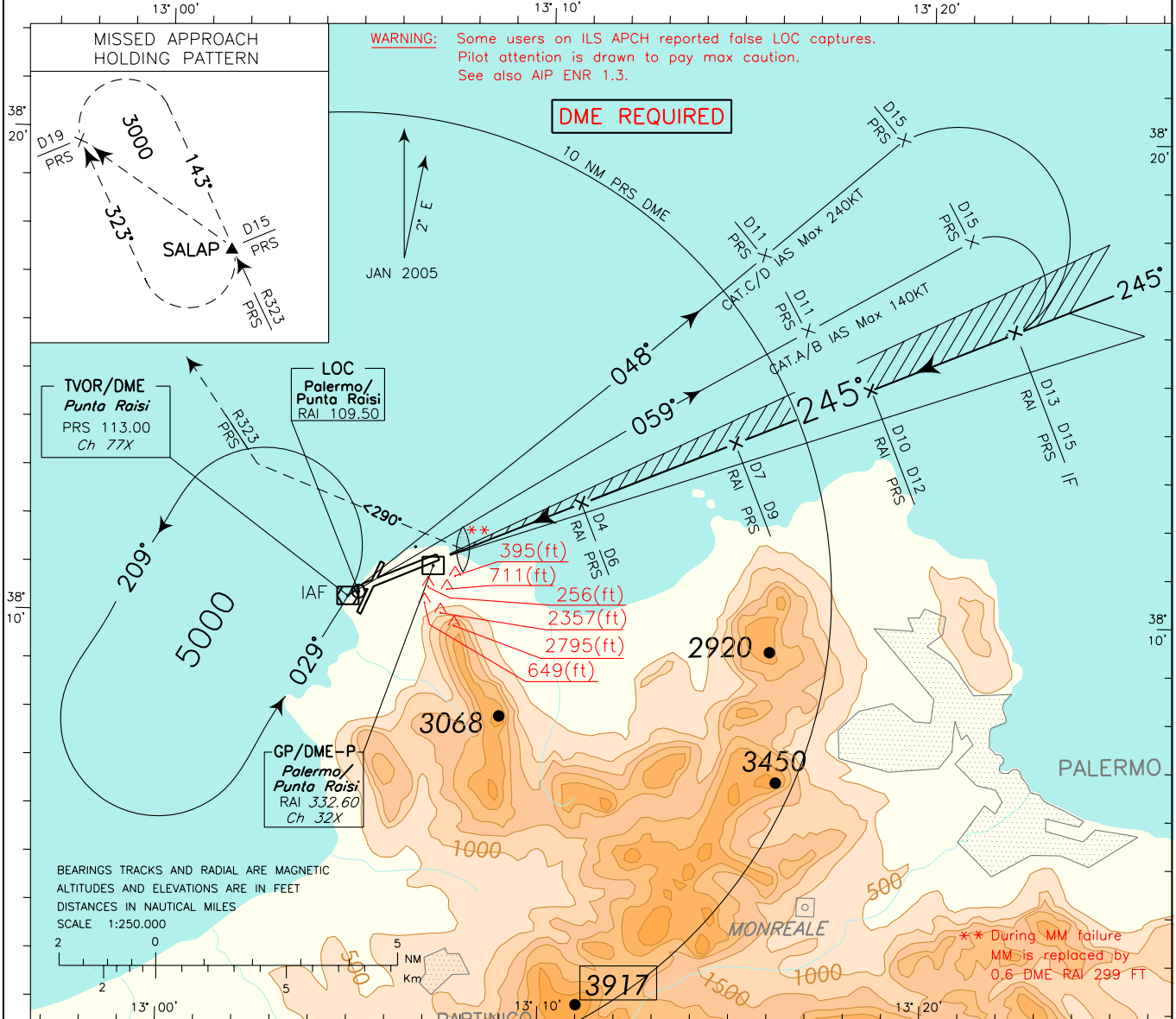
ICAO - INSTRUMENT APPROACH CHART

AD 2 LICJ 5-5

DOC.8168-ED.4-1993-AMDT 12

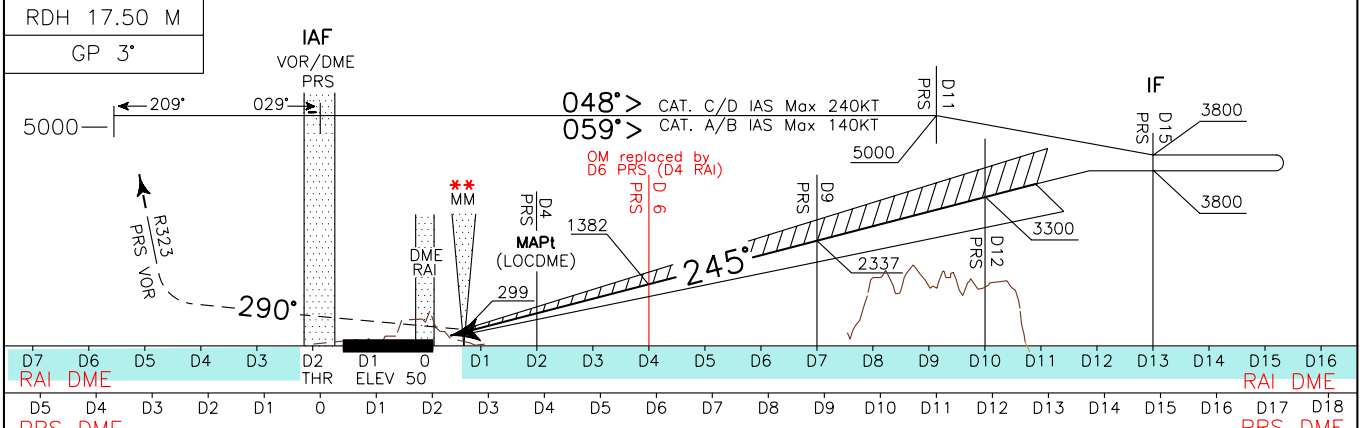
CHANGE: RADIO AID REQUIRED

<p>WARNING: Landing on RWY 02 is allowed HJ in VMC only. Landing on RWY 02 is forbidden HN. WARNING: For typographical reasons the hazard beacons located South of AD are not represented.</p>	<p>APP Palermo Approach 120.200 Palermo Radar 120.200 (118.650)</p>	<p>TWR Raisi Tower 119.050</p>	<p>AD ELEV 65</p>	<p>LICJ PALERMO/PUNTA RAISI ILS - Y RWY 25</p>
---	---	--	---	---



TRANSITION ALT 5000

MISSED APPROACH: As soon as possible turn right on TR 290° to join and follow RDL 323 PRS VOR DME, climbing to 3000 Ft and proceed to SALAP Holding pattern



STRAIGHT IN APPROACH	OCA (OCH)	A B C D				*Circling Sector: North-West of the field only	FT PER MIN	GS	D4 RAI-MAPt 2.00 NM	MAPt-THR 1.85 NM	ALT(HGT)	MNM SECT ALT PRS VOR
		ILSDME	500 (450)									
	LOCDME	750 (700)				636	120	1 : 00	0 : 56	5	1700(1650)	
	CIRCLING (*)	1000 (935)				741	140	0 : 52	0 : 48	4	1382(1332)	
						847	160	0 : 45	0 : 42	3	1063(1013)	
						953	180	0 : 40	0 : 37	2	744(694)	