

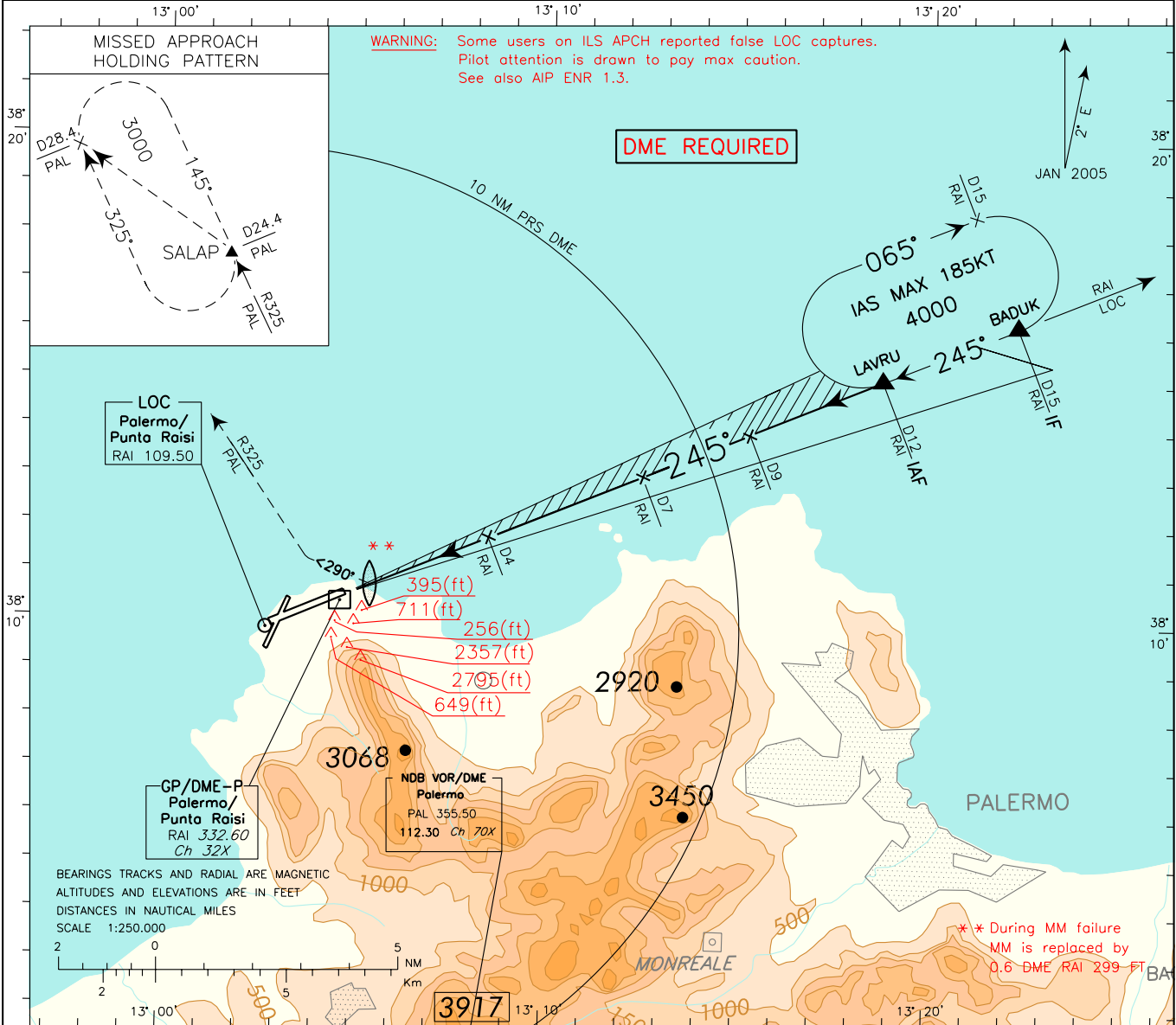
ICAO - INSTRUMENT APPROACH CHART

AD 2 LICJ 5-9

DOC.8168-ED.4-1993-AMDT 12

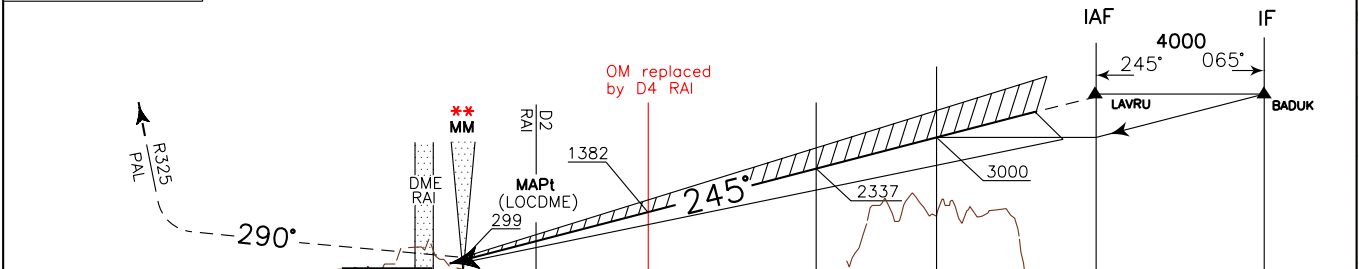
CHANGE: RADIO AID REQUIRED

<p>WARNING: Landing on RWY 02 is allowed HJ in VMC only. Landing on RWY 02 is forbidden HN. WARNING: For typographical reasons the hazard beacons located South of AD are not represented.</p>	<p>APP <i>Palermo Approach</i> 120.200 <i>Palermo Radar</i> 120.200 (118.650)</p>	<p>TWR <i>Raisi Tower</i> 119.050</p>	<p>AD ELEV 65</p>	<p>LICJ PALERMO/PUNTA RAISI ILS- W RWY 25</p>
---	--	--	--	--



TRANSITION ALT 5000
 MISSED APPROACH: As soon as possible turn right on TR 290° to join and follow RDL 325 PAL VOR, climbing to 3000 Ft and proceed to SALAP Holding pattern

RDH 17.50 M
GP 3°



D7 RAI	D6 DME	D5	D4	D3	D2	THR	D1	D0	ELEV 50	D1	D2	D3	D4	D5	D6	D7	D8	D9	D10	D11	D12	D13	D14	D15 RAI	DME
7	6	5	4	3	2	1	0	0	1	2	3	4	5	6	7	8	9	10	11	12	13	14	15		
NM												NM													

OCA (OCH)		A	B	C	D	<p>*Circling Sector: North-West of the field only</p>	FT PER MIN	GS	D4 RAI-MAPT	MAPt-THR	ALT(HGT)	MNM SECT ALT	
STRAIGHT IN APPROACH	ILS	500 (450)					530	100	1 : 12	1 : 07	6	2018(1968)	
	LOC/DME	750 (700)					636	120	1 : 00	0 : 56	5	1700(1650)	
	CIRCLING (*)	1000 (935)					741	140	0 : 52	0 : 48	4	1382(1332)	
						847	160	0 : 45	0 : 42	3	1063(1013)		
						953	180	0 : 40	0 : 37	2	744(694)		