

ICAO - INSTRUMENT APPROACH CHART

AD 2 LICJ 5-19

WARNING: Landing on RWY 02 is allowed HJ in VMC only. Landing on RWY 02 is forbidden HN.

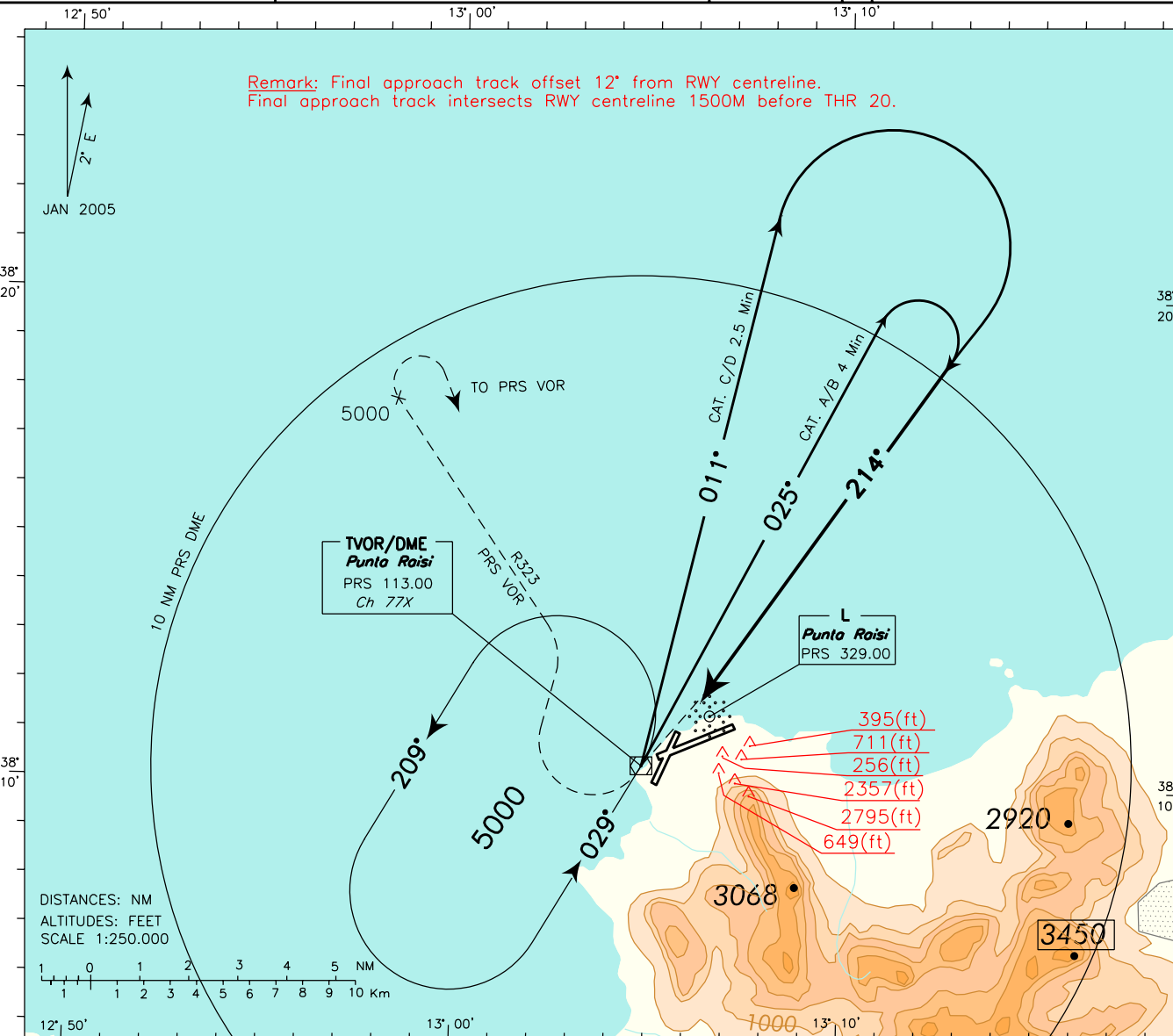
APP Palermo Approach
120.200
 Palermo Radar
120.200 (118.650)

TWR Raisi Tower
119.050

AD ELEV 65

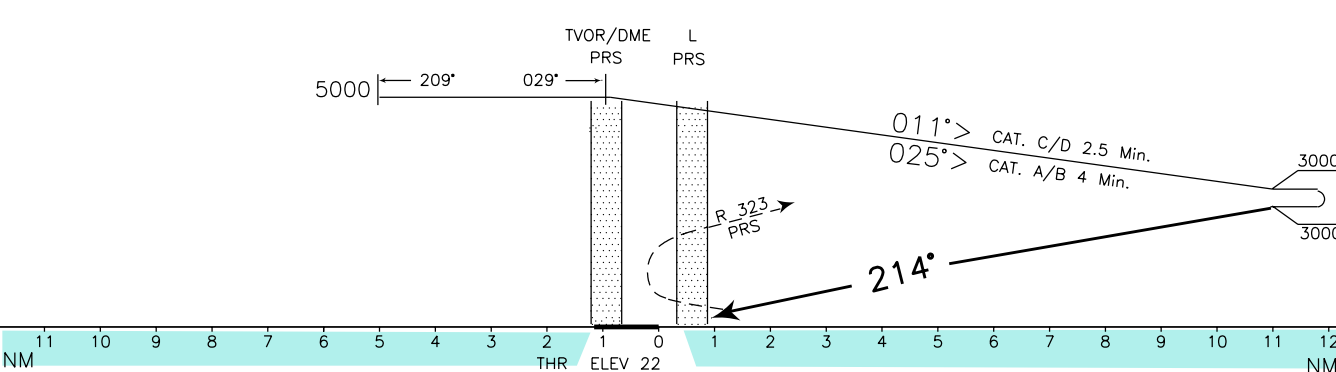
LICJ PALERMO/PUNTA RAISI
 VOR-Y RWY 20

DOC.8168-ED.4-1993-AMD.12
 CHANGE: CIRCLING BOX UPDATED



TRANSITION ALT 5000

MISSED APPROACH: Proceed to PRS VOR climbing to 5000ft. Over PRS VOR turn right to join and follow R323 PRS VOR. At 5000ft turn right inbound PRS VOR.



OCA (OCH)		A	B	C	D	*Circling Sector: North-West of the field only	FT PER MIN	GS	MNM SECT ALT PRS VOR
STRAIGHT IN APPROACH	VOR	885 (863)						506	
						608		120	
						709		140	
						810		160	
						911		180	
CIRCLING (*)		1000 (935)							