

### Initial Climb Procedures Runway 02 & 07

PALERMO/P. RAISI

TRANSITION ALT 5000

#### LEGEND

-----> ATC  
Discretion

#### FREQUENCIES

RAISI TWR 119.050  
PALERMO APP 120.200  
(118.650)

38°30' 38°30'

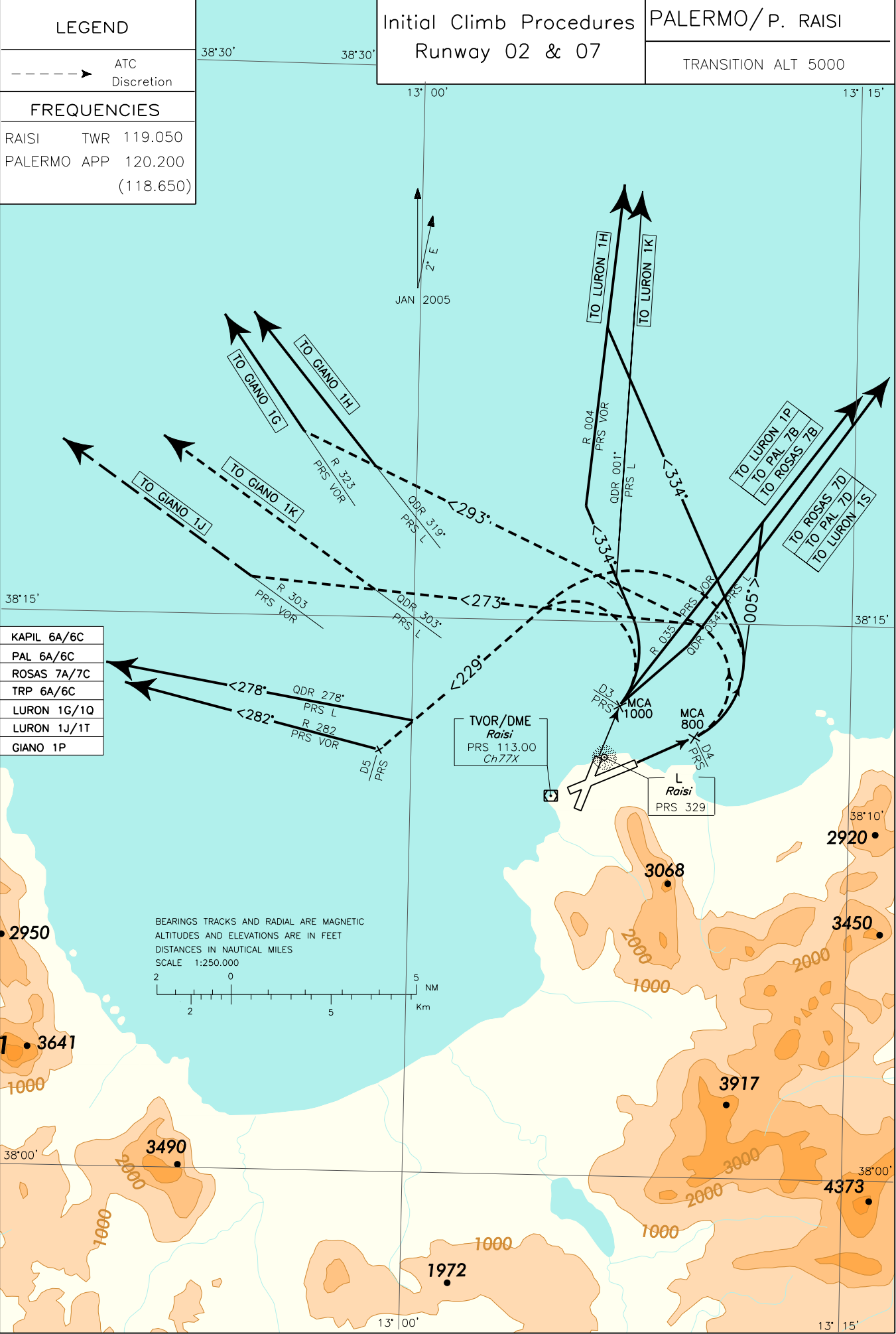
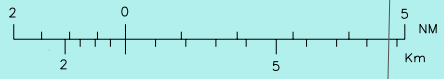
13° 00' 13° 15'

JAN 2005

CHANGE: "GIANO" SIDs DESIGNATOR UPDATED

- KAPIL 6A/6C
- PAL 6A/6C
- ROSAS 7A/7C
- TRP 6A/6C
- LURON 1G/1Q
- LURON 1J/1T
- GIANO 1P

BEARINGS TRACKS AND RADIAL ARE MAGNETIC  
ALTITUDES AND ELEVATIONS ARE IN FEET  
DISTANCES IN NAUTICAL MILES  
SCALE 1:250.000



**PROCEDURE DI SALITA INIZIALE****RWY 02**

Dopo il decollo procedere prua pista fino a 3 NM PRS DME (2.2 NM ITO DME), quindi procedere per la SID assegnata.

Gradiente minimo di salita: 7,5% (450 ft/NM)

MCA: 3NM PRS DME (2.2 NM ITO DME) 1000 FT

**RWY 07**

Dopo il decollo procedere prua pista fino a 4 NM PRS DME (2 NM RAI DME), quindi virare a sinistra fino ad inserirsi nella SID assegnata.

Gradiente minimo di salita: 6,1% (370 ft/NM)

MCA: 4 NM PRS DME (2 NM RAI DME) 800 FT

**INITIAL CLIMB PROCEDURES****RWY 02**

After take-off proceed runway heading until 3 NM PRS DME (2.2 NM ITO DME), then proceed on assigned SID.

Minimum climb gradient: 7,5% (450 ft/NM).

**RWY 07**

After take off proceed on runway heading until 4 NM PRS DME (2 NM RAI DME), then turn left until joining the assigned SID.

Minimum climb gradient: 6,1% (370 ft/NM)

Intenzionalmente bianca

*Intentionally left blank*