

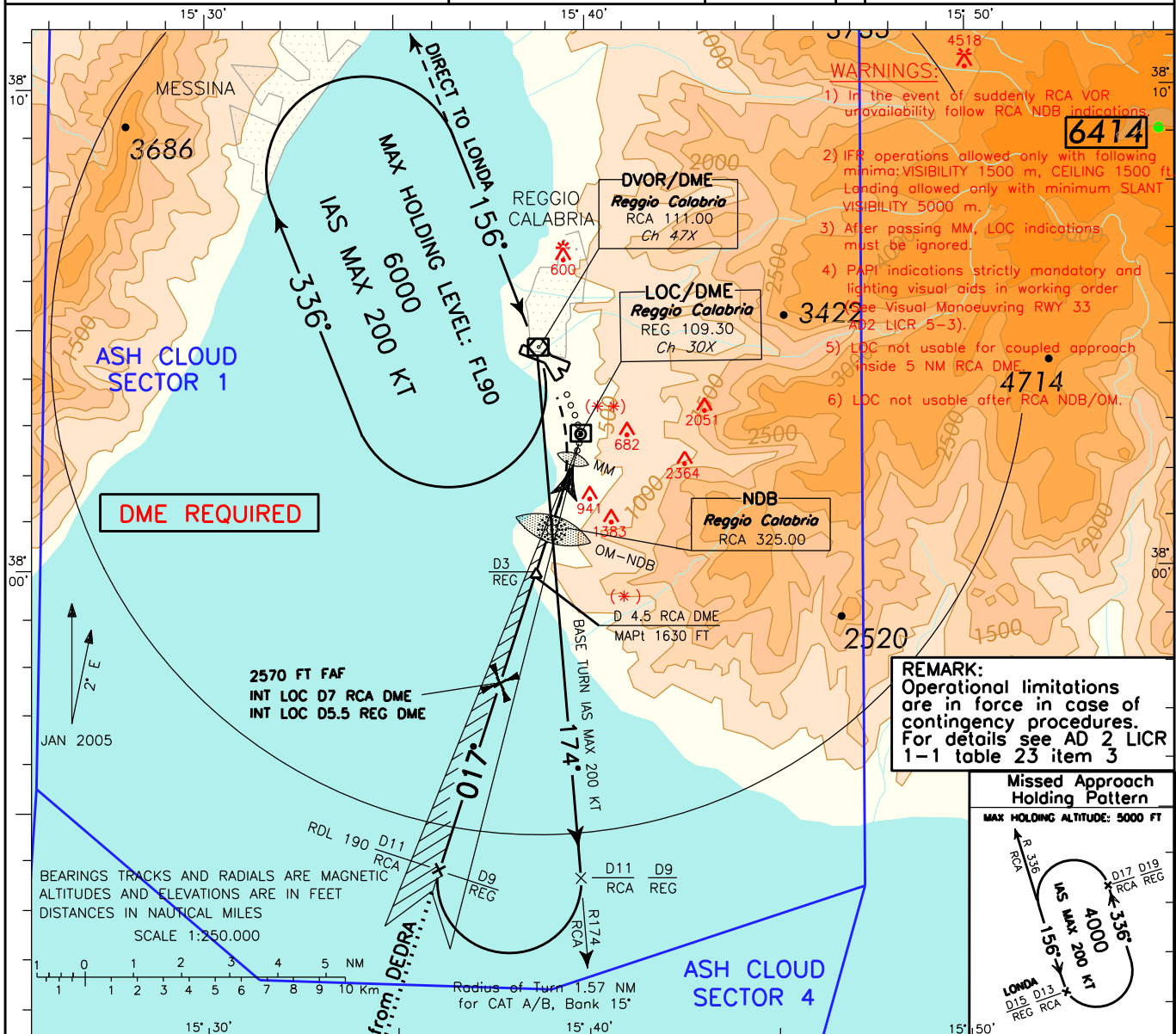
WARNING:
 (017)* is instrument final approach track not aligned with runway 33 longitudinal axis.

APP *Reggio Approach* 120.275
 TWR *Reggio Tower* 118.250

AD ELEV 95

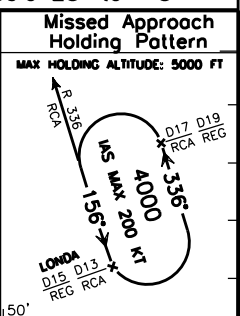
LICR
REGGIO CALABRIA
CONTINGENCY
 LOC - D

CHANGE: NEW "REG" DME IMPLEMENTED



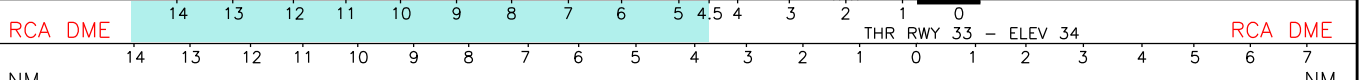
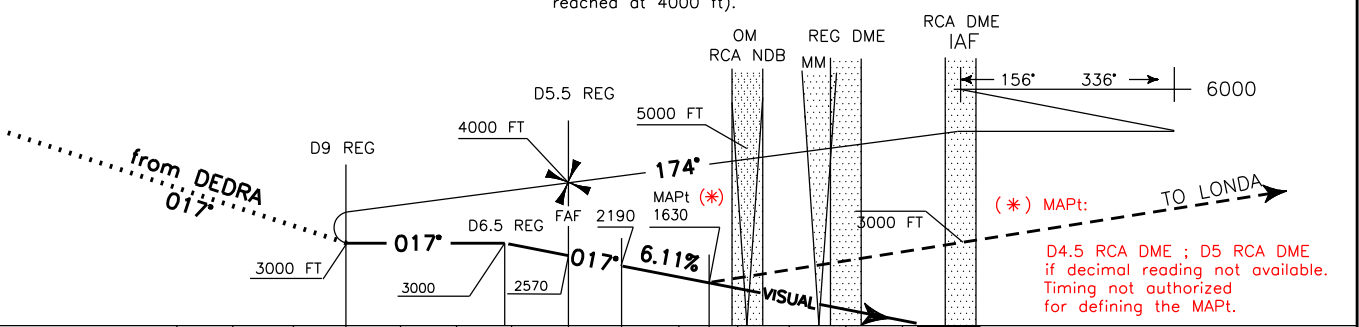
- WARNINGS:**
- 1) In the event of suddenly RCA VOR unavailability follow RCA NDB indications
 - 2) IFR operations allowed only with following minima: VISIBILITY 1500 m, CEILING 1500 ft. Landing allowed only with minimum SLANT VISIBILITY 5000 m.
 - 3) After passing MM, LOC indications must be ignored.
 - 4) PAPI indications strictly mandatory and lighting visual aids in working order (See Visual Manoeuvring RWY 33 AD 2 LICR 5-3).
 - 5) LOC not usable for coupled approach inside 5 NM RCA DME.
 - 6) LOC not usable after RCA NDB/OM.

REMARK:
 Operational limitations are in force in case of contingency procedures. For details see AD 2 LICR 1-1 table 23 item 3



TRANSITION ALT 7000

MISSED APPROACH: Over RCA NDB/OM climb to 4000 ft and turn left direct to RCA VOR to be reached not above 3000 ft and then proceed on RDL 336 RCA VOR bound to LONDA (to be reached at 4000 ft).



LANDING MINIMA		FT per MIN	GS	FAF-MAPT	MAPt-THR	DIST RCA	ALT(HGT)	MINM SECT ALT VOR RCA
CATEGORY	A - B - C							
OCA (OCH)	1630 (1535)	370	60	2 : 35	4 : 06	6 DME	2190(2095)	
CIRCLING RWY 33 AFTER NDB/OM	(** ON PRESCRIBED TRACK ONLY (See Chart)	495	80	1 : 57	3 : 04	5 DME	1800(1705)	
		620	100	1 : 33	2 : 28	4 DME	1410(1315)	
		745	120	1 : 18	2 : 03	3 DME	1000 (905)	
		865	140	1 : 07	1 : 45	2 DME	560 (465)	
CIRCLING RWY 15	IN VMC DURING DAY LIGHT ONLY (West of the Aerodrome)	990	160	0 : 58	1 : 32	1 DME	180 (85)	