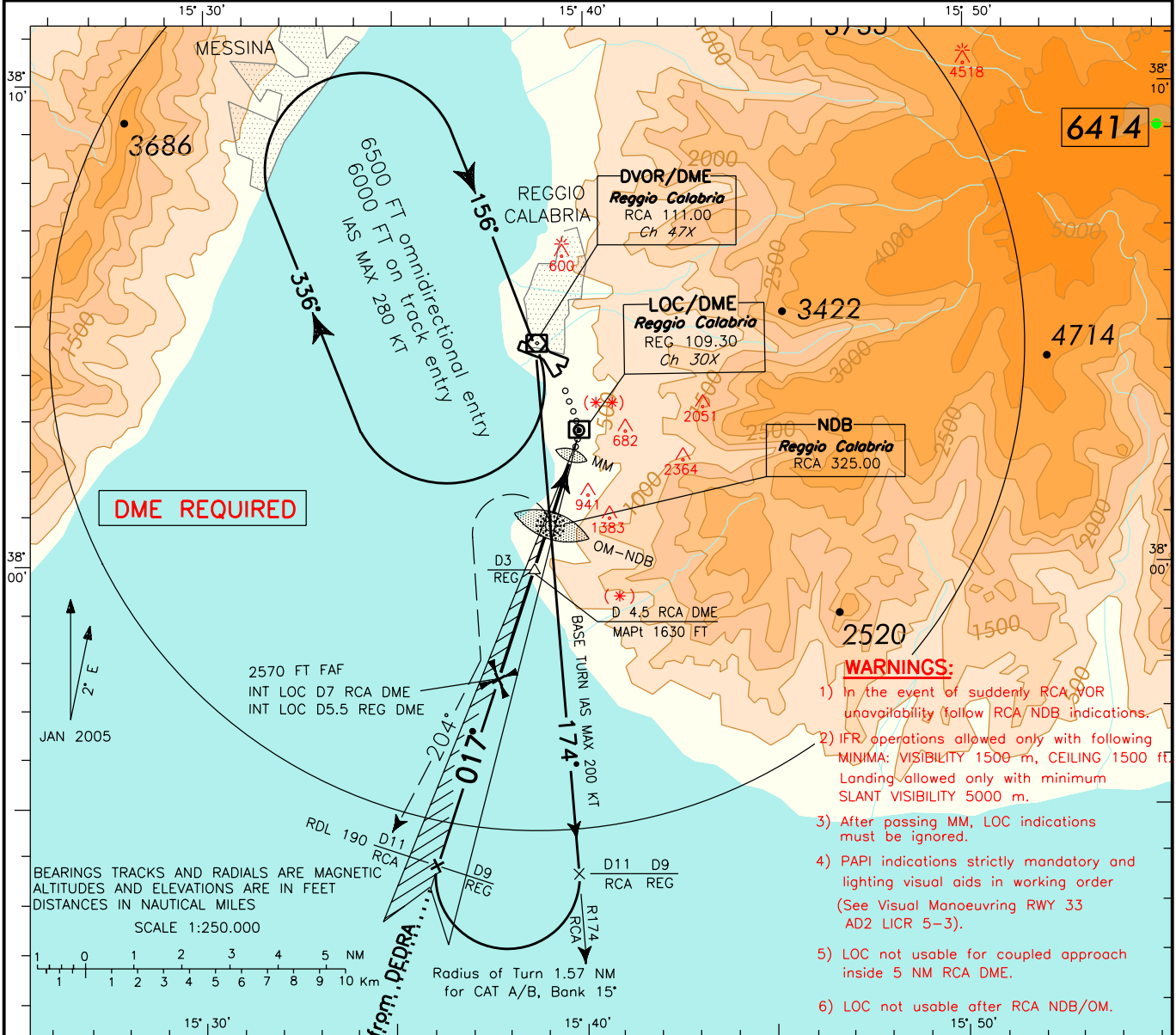


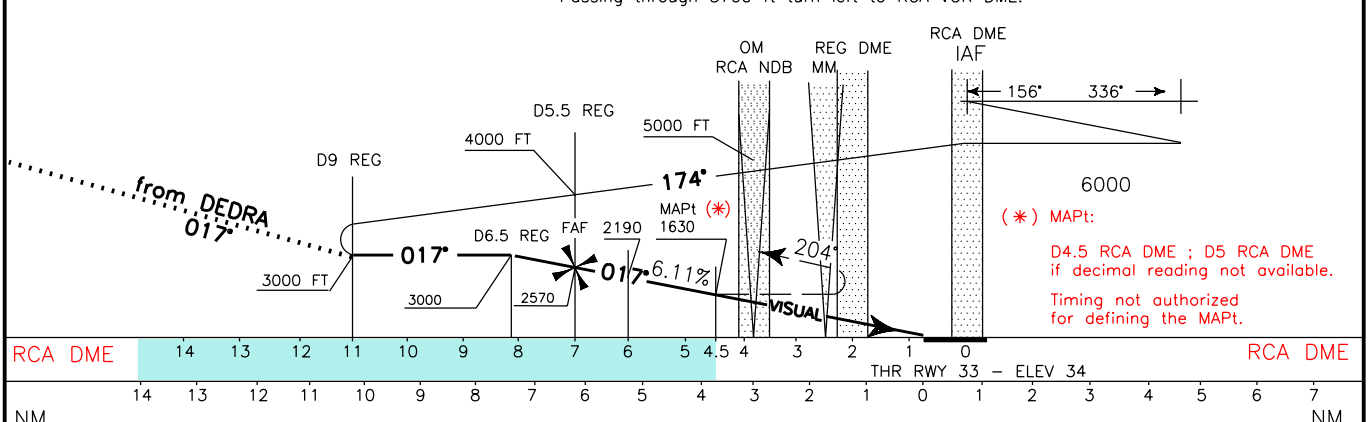
<p><b>WARNING:</b> (017)* is instrument final approach track not aligned with runway 33 longitudinal axis.</p>	APP <i>Reggio Approach</i> 120.275	AD ELEV	LICR	REGGIO CALABRIA LOC - C
	TWR <i>Reggio Tower</i> 118.250	95		

DOC.8168-ED.5-2006 AMDT 4  
CHANGE: DME DISTANCE ALONG DESCEND TRACK 017\* UPDATED



- WARNINGS:**
- 1) In the event of suddenly RCA VOR unavailability (follow RCA NDB indications).
  - 2) IFR operations allowed only with following MINIMA: VISIBILITY 1500 m, CEILING 1500 ft. Landing allowed only with minimum SLANT VISIBILITY 5000 m.
  - 3) After passing MM, LOC indications must be ignored.
  - 4) PAPI indications strictly mandatory and lighting visual aids in working order (See Visual Manoeuvring RWY 33 AD2 LICR 5-3).
  - 5) LOC not usable for coupled approach inside 5 NM RCA DME.
  - 6) LOC not usable after RCA NDB/OM.

TRANSITION ALT 7000 MISSED APPROACH: Over RCA NDB OM turn left to intercept RDL 204 RCA VOR climbing to 6500 ft. Passing through 3700 ft turn left to RCA VOR DME.



CATEGORY	LANDING MINIMA			FT per MIN	GS	FAF-MAPT	MAPT-THR	DIST RCA	ALT(HGT)	MNM SECT ALT VOR
	A	B	C							
OCA (OCH)	1630 (1535)			370	60	2 : 35	4 : 06	7 DME	2570(2475)	
CIRCLING RWY 33 AFTER NDB/OM	(**) ON PRESCRIBED TRACK ONLY (See Chart)			495	80	1 : 57	3 : 04	6 DME	2190(2095)	
				620	100	1 : 33	2 : 28	4 DME	1410(1315)	
				745	120	1 : 18	2 : 03	3 DME	1000 (905)	
CIRCLING RWY 15	IN VMC DURING DAY LIGHT ONLY (West of the Aerodrome)			865	140	1 : 07	1 : 45	2 DME	560 (465)	
				990	160	0 : 58	1 : 32	1 DME	180 (85)	