

ICAO - INSTRUMENT APPROACH CHART

AD 2 LICR 5-9

DOC.8168-ED.5-2006 AMDT 4

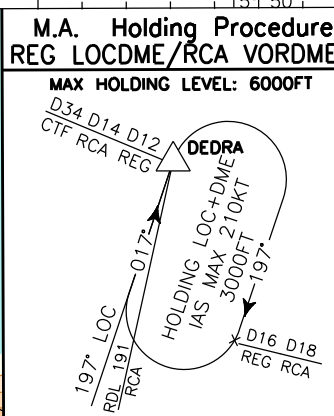
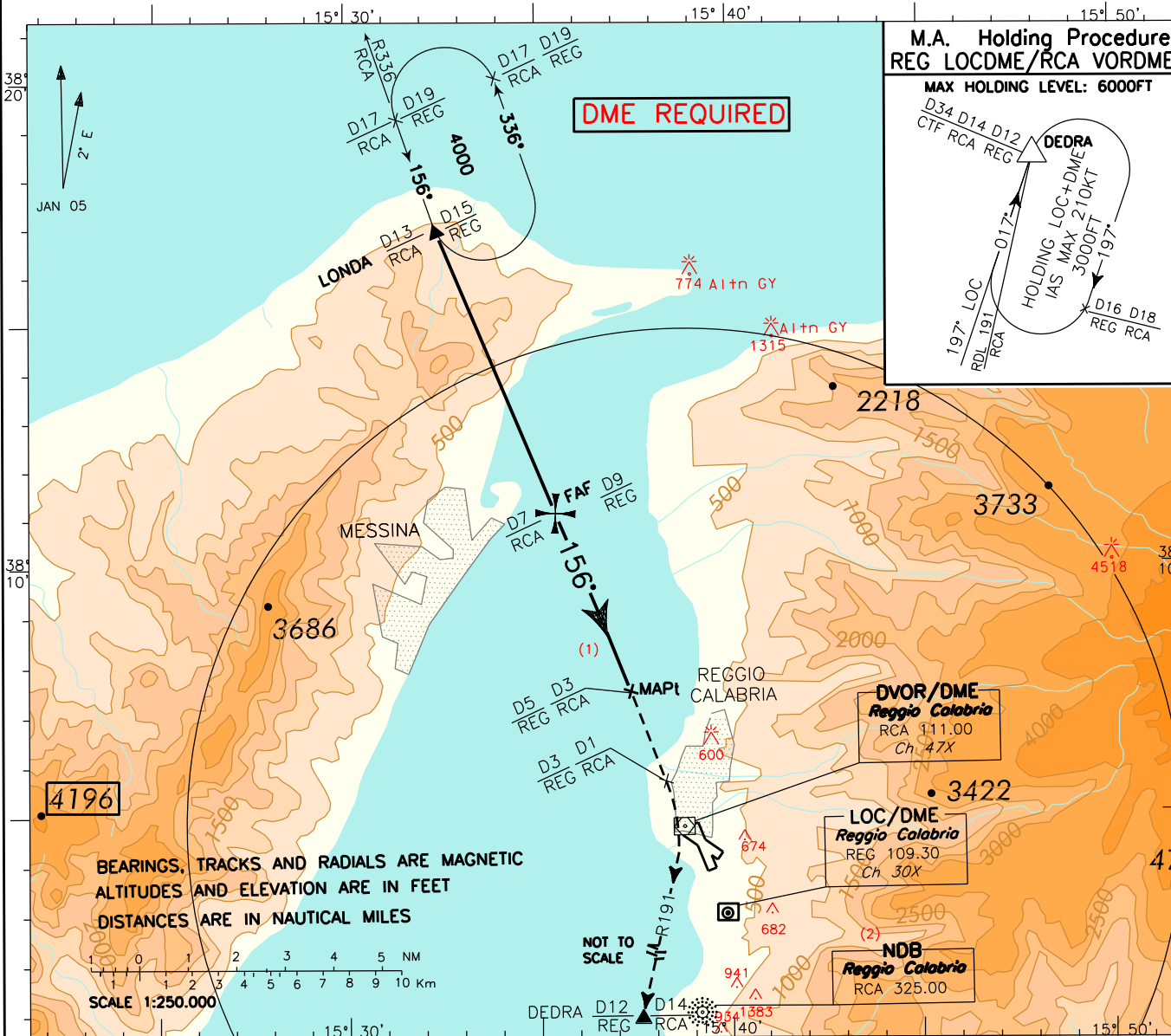
CHANGE: NEW "REG" DME IMPLEMENTED

WARNING: In case of circling RWY 33, PAPI indications strictly mandatory and lighting visual AIDS in working order.
(See Visual Manoeuvring Rwy 33 - AD2 LICR 5-3)

APP *Reggio Approach* 120.275
TWR *Reggio Tower* 118.250

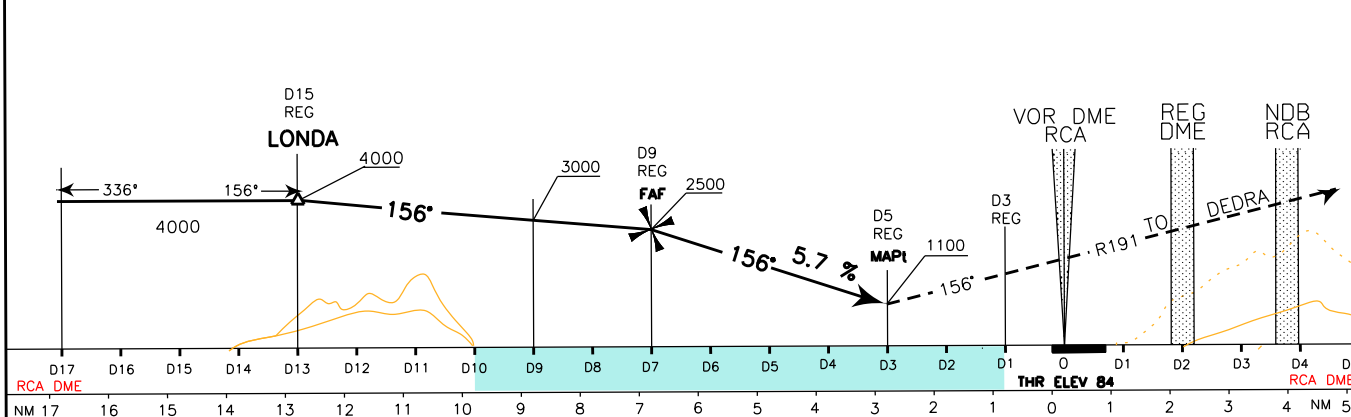
AD ELEV
95

LICR
REGGIO CALABRIA
VOR - Z RWY 15



TRANSITION ALT 7000

MISSED APPROACH : Continue on track 156° until 1 NM RCA DME (or 3NM REG DME) then turn right (IAS MAX 200 kt) to join RDL 191 RCA VOR climbing to 3000 ft direct to DEDRA Holding Pattern to be reached at 3000 ft.



| LANDING MINIMA (see WARNING "1") | | |
|-------------------------------------|-------------|---------|
| CATEGORY | A - B - C | |
| OCA (OCH) | VIS | CEILING |
| 1100 (1016) | 5000 M | 1500 FT |
| CIRCLING (see WARNING "2") | 1500 (1405) | |

REMARK1: Final approach track offset 5.4° from runway centerline. Runway centerline intercepted 2018m from Threshold 15.
REMARK2: In the event of suddenly RCA VOR unavailability ACFT shall proceed to RCA NDB climbing to 6000ft. If 6000ft are not achieved at first overflying of RCA NDB climb to 6000ft along QDR 204°. Passing 3700ft turn left to RCA NDB.
WARNING 1: IFR operations allowed only with following MINIMA: VISIBILITY 1500m, CEILING 1500ft. Landing allowed only with minimum SLANT VISIBILITY 5000m.
WARNING 2: Circling allowed West of the aerodrome only.

| GS | FT/MIN | DIST | ALT (HGT) |
|-----|--------|------|-------------|
| 80 | 460 | 6DME | 2140 (2056) |
| 100 | 580 | 5DME | 1800 (1716) |
| 120 | 690 | 4DME | 1450 (1366) |
| 140 | 810 | 3DME | 1100 (1016) |
| 160 | 920 | 2DME | 760 (676) |

