

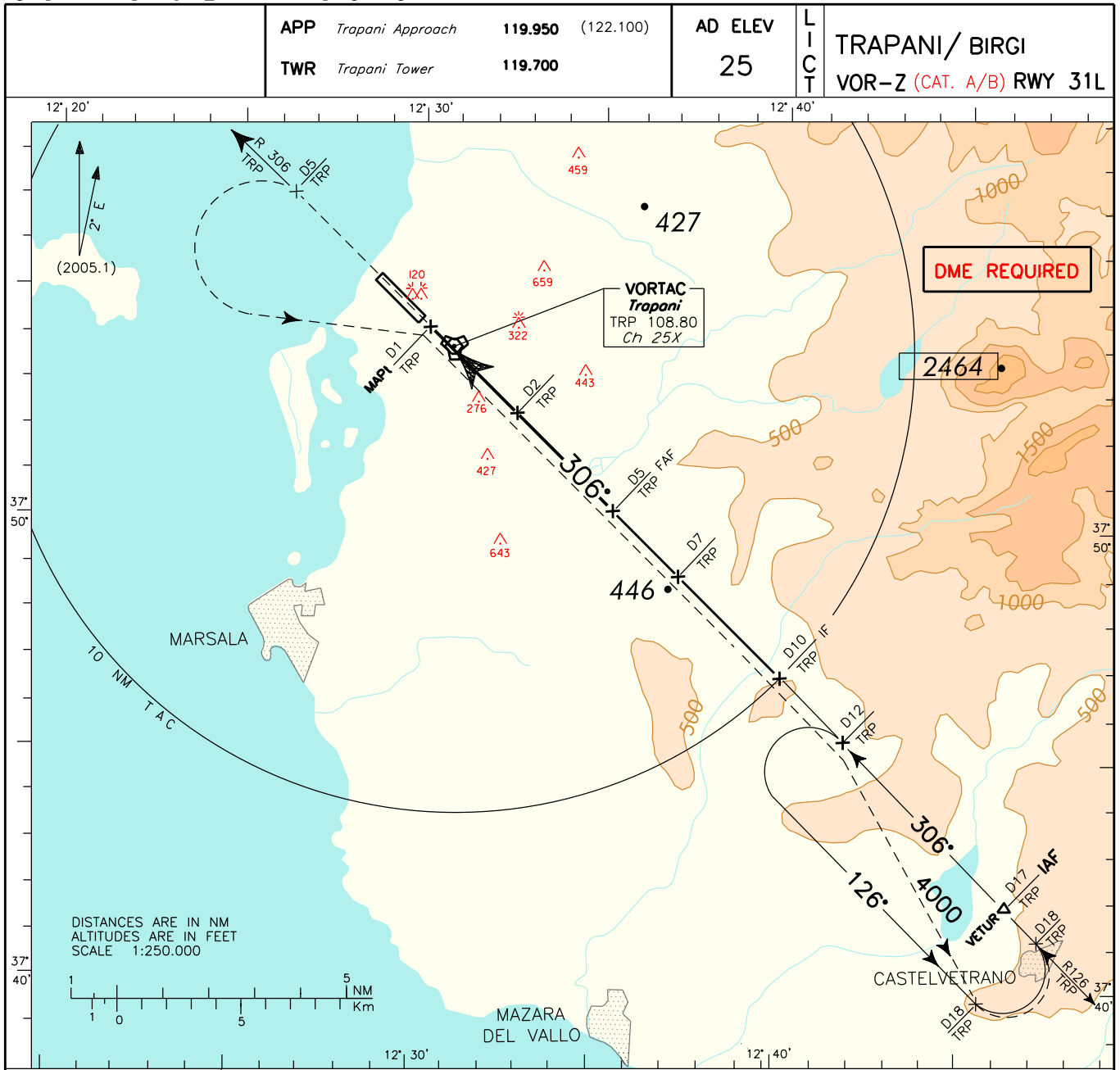
APP *Trapani Approach* 119.950 (122.100)  
 TWR *Trapani Tower* 119.700

AD ELEV 25

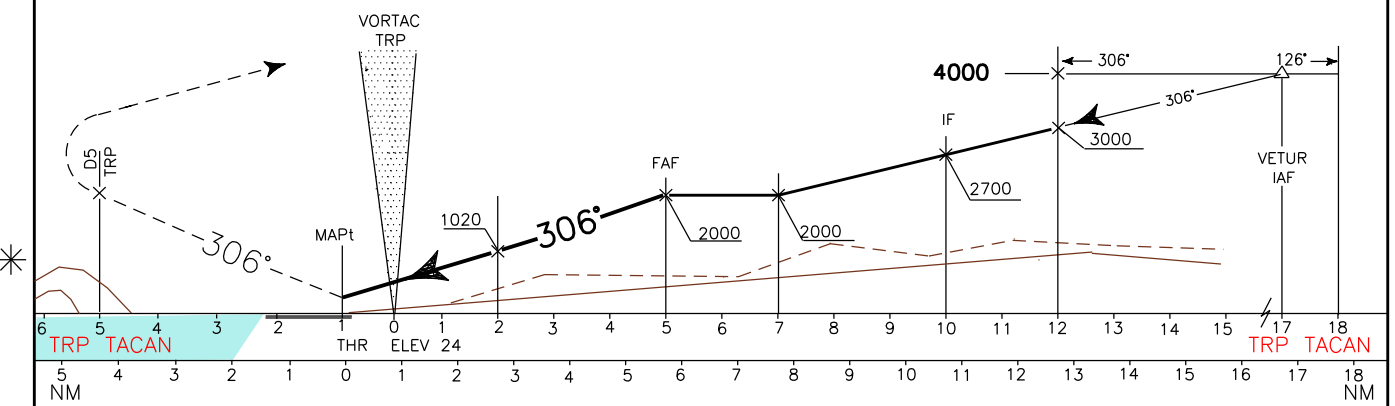
TRAPANI/ BIRGI  
 VOR-Z (CAT. A/B) RWY 31L

DOC.8168-ED.3-1986

CHANGE: LANDING MINIMA



TRANSITION ALT 5000 MISSED APPROACH: At 1 NM after TRP TACAN proceed on RDL 306 TRP VOR climb to 4000 ft. At 5 NM TRP TACAN turn left to TRP VORTAC to leave on RDL 126 direct to Missed Approach holding pattern.  
 Hold on RDL 126 at 4000 ft between 12 NM and 18 NM TRP VORTAC; Inbound track 306°, left turn.



| STRAIGHT IN APPROACH | VOR+DME | OCA (OCH) |   |   |   | (1)<br>Circling South/South West of runway only. | GS   | PER MIN | DIST        | ALT (HGT) | MNM SECT ALT VOR |
|----------------------|---------|-----------|---|---|---|--|------|---------|-------------|-----------|------------------|
|                      |         | A         | B | C | D |  |      |         |             |           |                  |
|                      |         | 640 (620) |   |   |   | 70   | 380  | 5 DME   | 2000(1980)  |           |                  |
|                      |         |           |   |   |   | 90   | 490  | 4 DME   | 1670(1650)  |           |                  |
|                      |         |           |   |   |   | 110  | 600  |         |             |           |                  |
|                      |         |           |   |   |   | 130  | 710  | 3 DME   | 1350(1330)  |           |                  |
|                      |         |           |   |   |   | 150  | 820  | 2 DME   | 1020 (1000) |           |                  |
|                      |         |           |   |   |   | 170  | 930  | 1 DME   | 700 (680)   |           |                  |
| CIRCLING (1)         |         | 640 (620) |   |   |   | 190  | 1040 |         |             |           |                  |
|                      |         |           |   |   |   | 210  | 1150 | 0.8DME  | 640 (620)   |           |                  |