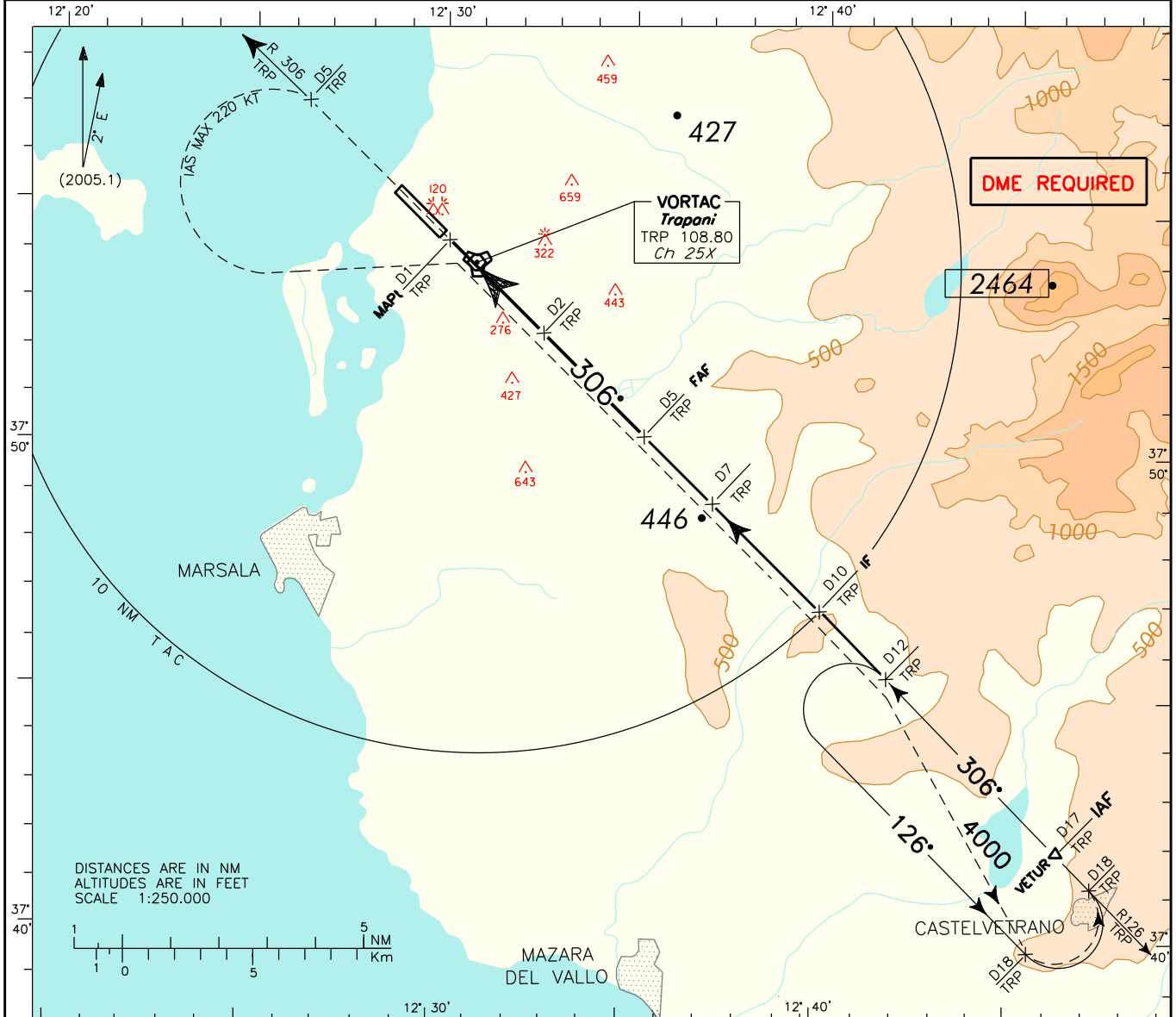


APP *Trapani Approach* 119.950 (122.100)  
 TWR *Trapani Tower* 119.700

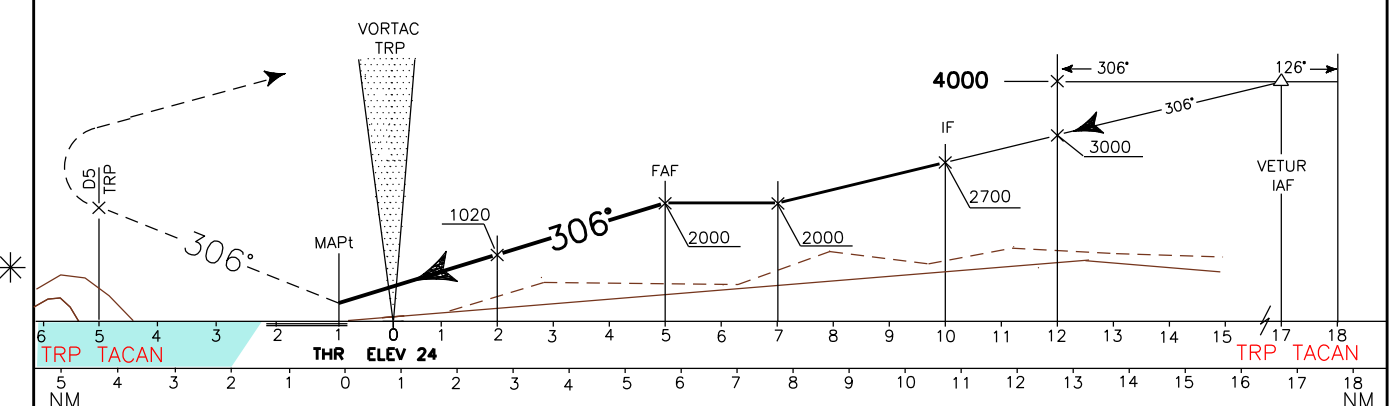
AD ELEV  
 25

LICIT  
 TRAPANI/ BIRGI  
 VOR-Z (CAT. C/D) RWY 31L

CHANGE: LANDING MINIMA



TRANSITION ALT 5000 MISSED APPROACH: At 1 NM after TRP TACAN proceed on RDL 306 TRP VOR climb to 4000 ft. At 5 NM TRP TACAN turn left to TRP VORTAC (IAS MAX 220 kt) to leave on RDL 126 direct to Missed Approach holding pattern. Hold on RDL 126 at 4000 ft between 12 NM and 18 NM TRP VORTAC; Inbound track 306°, left turn.



OCA (OCH)		A	B	C	D	Circling South/South West of runway only. (1)	GS	PER MIN	DIST	ALT (HGT)	MNM SECT ALT TRP VOR
STRAIGHT IN APPROACH	VOR			640 (620)			70	380	5 DME	2000(1980)	
							90	490	4 DME	1670(1650)	
							110	600			
							130	710	3 DME	1350(1330)	
CIRCLING (1)				1040 (1020)		150	820	2 DME	1020(1000)		
						170	930	1 DME	700 (680)		
						190	1040				
						210	1150	0.8DME	640 (620)		

