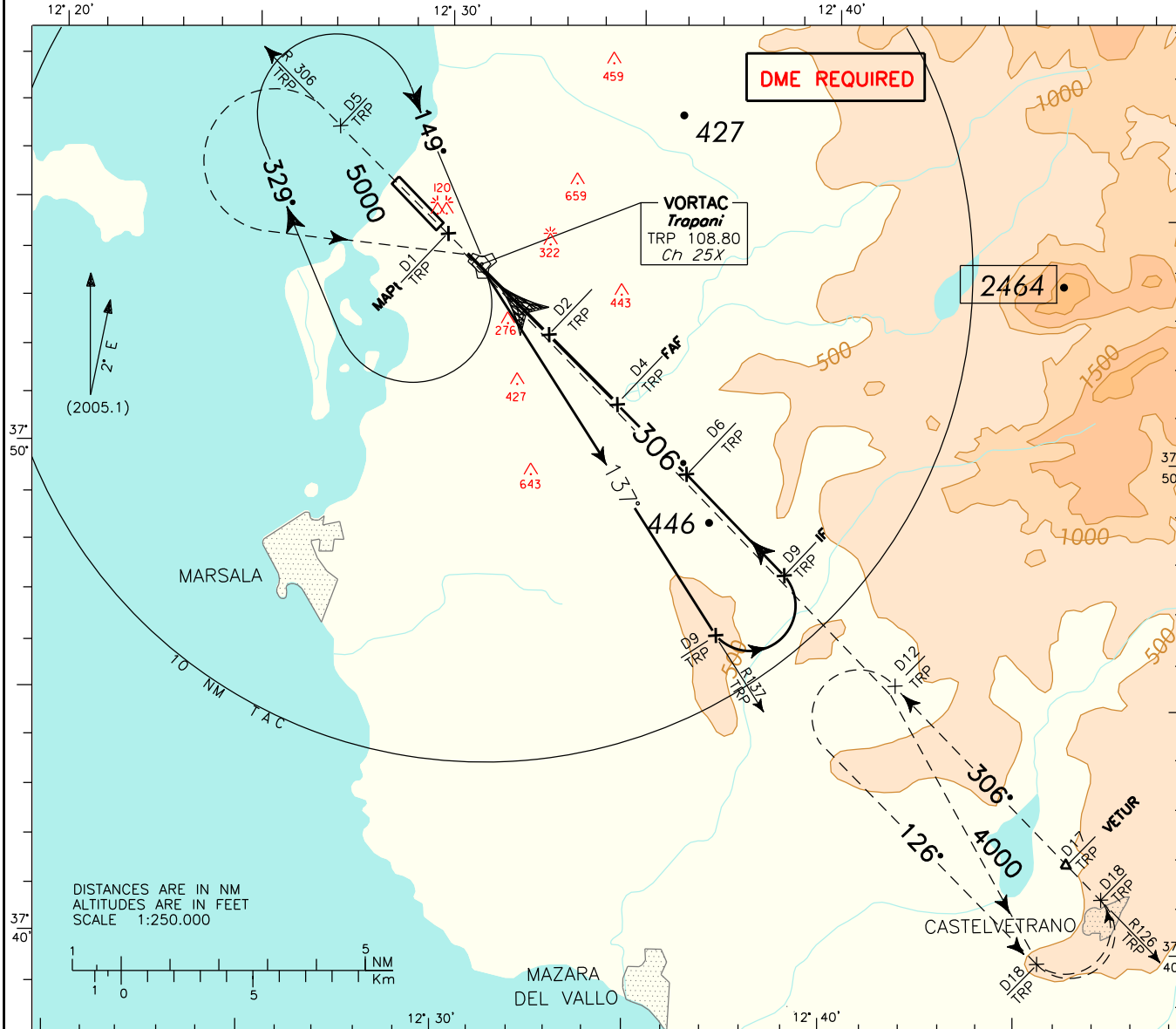


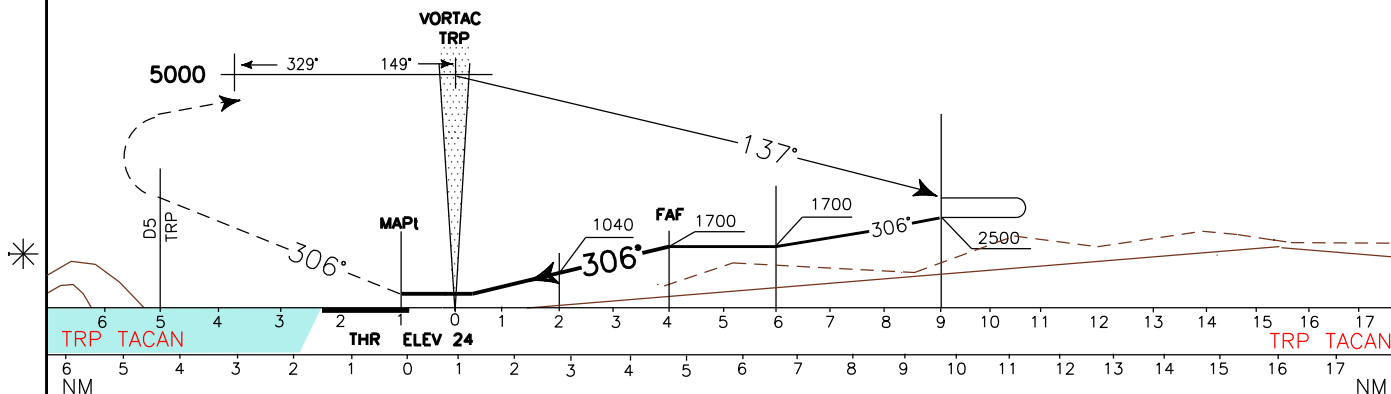
APP	Trapani Approach	119.950	(122.100)	AD ELEV	25	L I C I T	TRAPANI/ BIRGI VOR-Y (CAT. A/B) RWY 31L
TWR	Trapani Tower	119.700					

DOC.8168-ED.3-1986

CHANGE: LANDING MINIMA



**TRANSITION ALT 5000** MISSED APPROACH: At 1 NM after TRP TACAN proceed on RDL 306 TRP VOR climb to 4000 ft. At 5 NM TRP TACAN turn left to TRP VORTAC to leave on RDL 126 direct to Missed Approach holding pattern. Hold on RDL 126 at 4000 ft between 12 NM and 18 NM TRP VORTAC; Inbound track 306°, left turn.



OCA (OCH)		A	B	C	D	(1) Circling South/South West of runway only.	GS	PER MIN	DIST	ALT (HGT)	MNM VOR	SECT	ALT TRP
STRAIGHT IN APPROACH	VOR	640 (620)											
						90	490						
						110	600	3DME	1370(1350)				
						130	710	2DME	1040(1020)				
						150	820	1DME	710(690)				
CIRCLING (1)		640 (620)					170	930	0.8DME	640(620)			
							190	1040					
							210	1150					