

APP *Trapani Approach* 119.950 (122.100)

AD ELEV

LICIT

TRAPANI/ BIRGI

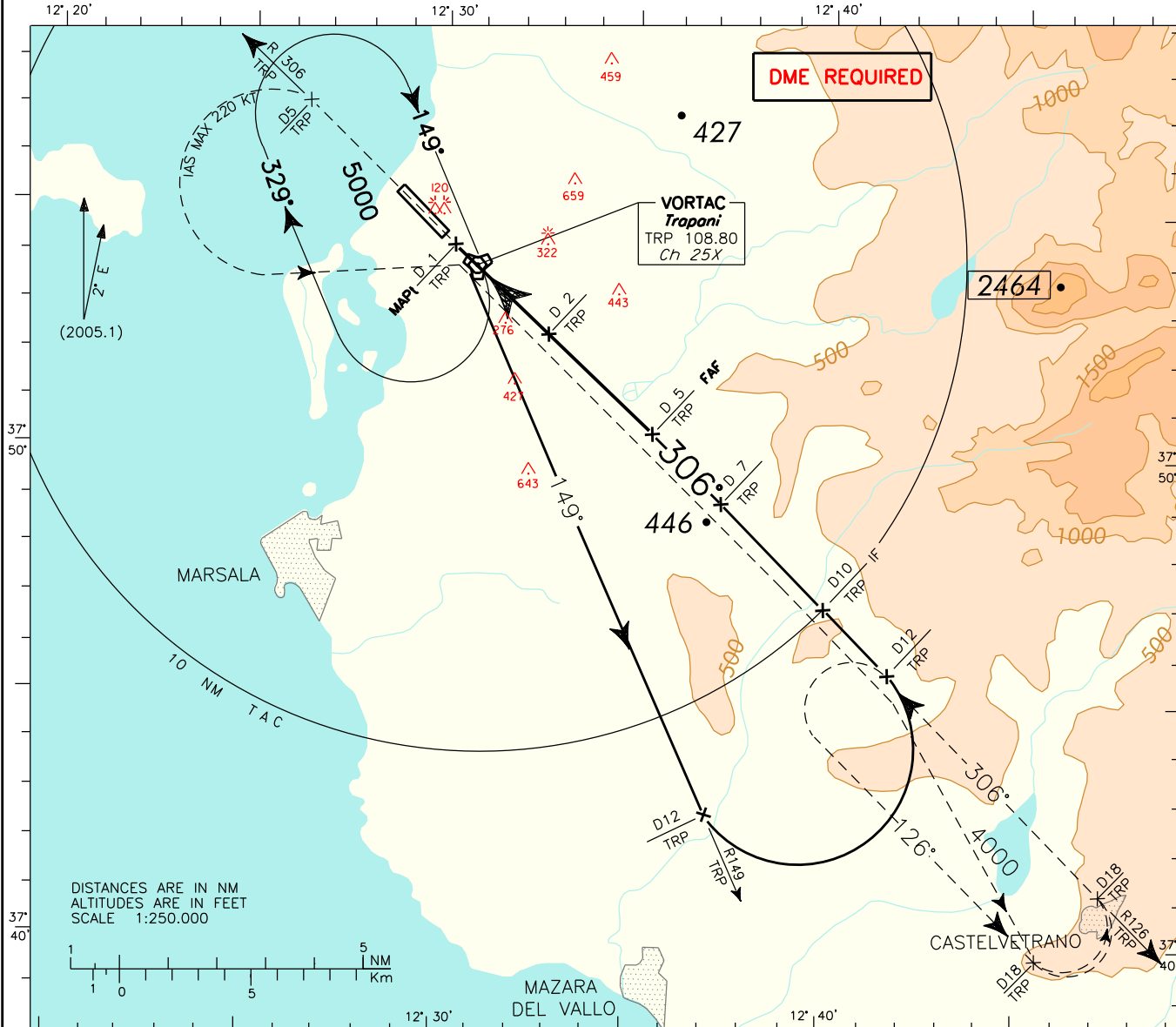
TWR *Trapani Tower* 119.700

25

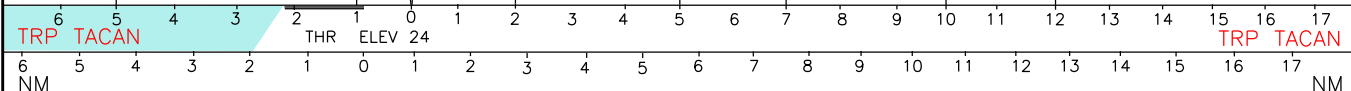
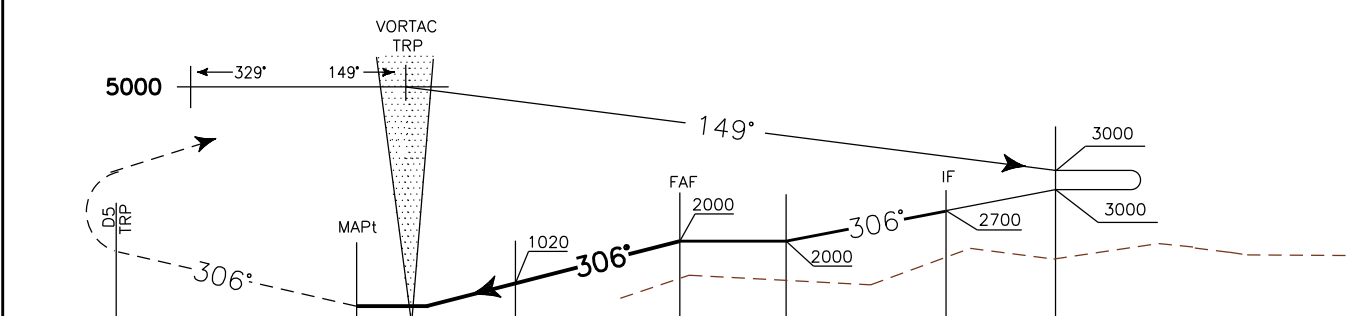
VOR-Y (CAT. C/D) RWY 31L

DOC.8168-ED.3-1986

CHANGE: LANDING MINIMA



TRANSITION ALT 5000 MISSED APPROACH: At 1 NM after TRP TACAN proceed on RDL 306 TRP VOR climb to 4000 ft. At 5 NM TRP TACAN turn left to join and follow RDL 126 TRP VOR (left turn limited to 220 kt) direct to Missed Approach holding pattern. Hold on RDL 126 at 4000 ft between 12 NM and 18 NM TRP VORTAC. Inbound track 306°, left turn.



OCA (OCH)	A	B	C	D	Circling South/South West of runway only. (1)	<table border="1"> <thead> <tr> <th>GS</th> <th>PER MIN</th> <th>DIST</th> <th>ALT (HGT)</th> </tr> </thead> <tbody> <tr><td>70</td><td>380</td><td>5 DME</td><td>2000(1980)</td></tr> <tr><td>90</td><td>490</td><td>4 DME</td><td>1670(1650)</td></tr> <tr><td>110</td><td>600</td><td>3 DME</td><td>1350(1330)</td></tr> <tr><td>130</td><td>710</td><td>2 DME</td><td>1020(1000)</td></tr> <tr><td>150</td><td>820</td><td>1 DME</td><td>700 (680)</td></tr> <tr><td>170</td><td>930</td><td></td><td></td></tr> <tr><td>190</td><td>1040</td><td></td><td></td></tr> <tr><td>210</td><td>1150</td><td>0.8DME</td><td>640 (620)</td></tr> </tbody> </table>	GS	PER MIN	DIST	ALT (HGT)	70	380	5 DME	2000(1980)	90	490	4 DME	1670(1650)	110	600	3 DME	1350(1330)	130	710	2 DME	1020(1000)	150	820	1 DME	700 (680)	170	930			190	1040			210	1150	0.8DME	640 (620)	<table border="1"> <thead> <tr> <th>MNM SECT ALT</th> <th>VOR</th> <th>TRP</th> </tr> </thead> <tbody> <tr> <td>3800</td> <td>180</td> <td>5800</td> </tr> <tr> <td>4000</td> <td>090</td> <td>4500</td> </tr> <tr> <td></td> <td>270</td> <td></td> </tr> <tr> <td></td> <td>360</td> <td></td> </tr> </tbody> </table>	MNM SECT ALT	VOR	TRP	3800	180	5800	4000	090	4500		270			360	
GS	PER MIN	DIST	ALT (HGT)																																																							
70	380	5 DME	2000(1980)																																																							
90	490	4 DME	1670(1650)																																																							
110	600	3 DME	1350(1330)																																																							
130	710	2 DME	1020(1000)																																																							
150	820	1 DME	700 (680)																																																							
170	930																																																									
190	1040																																																									
210	1150	0.8DME	640 (620)																																																							
MNM SECT ALT	VOR	TRP																																																								
3800	180	5800																																																								
4000	090	4500																																																								
	270																																																									
	360																																																									
STRAIGHT IN APPROACH	VOR+DME		640 (620)																																																							
CIRCLING (1)			1040 (1020)																																																							