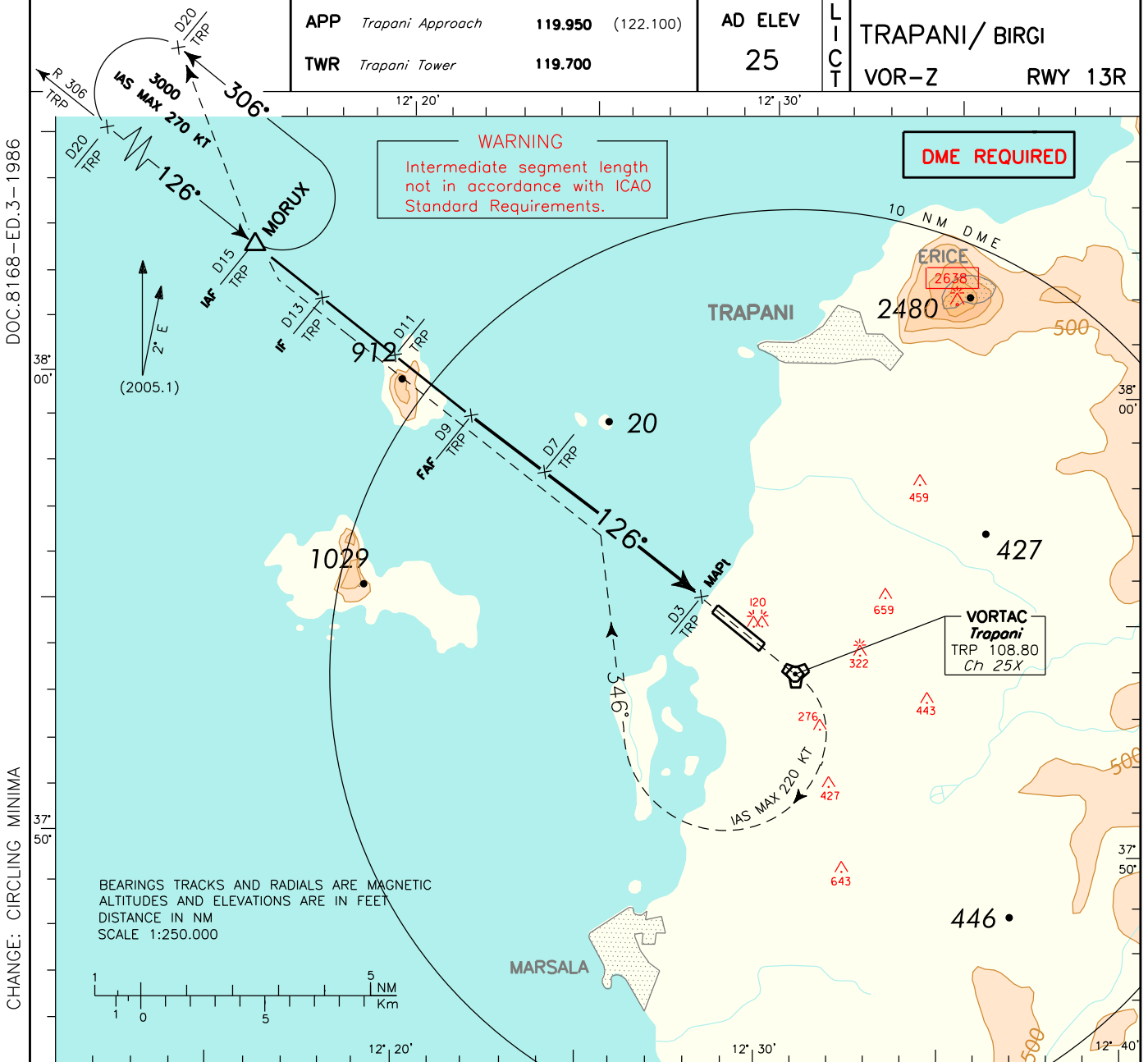


ICAO - INSTRUMENT APPROACH CHART

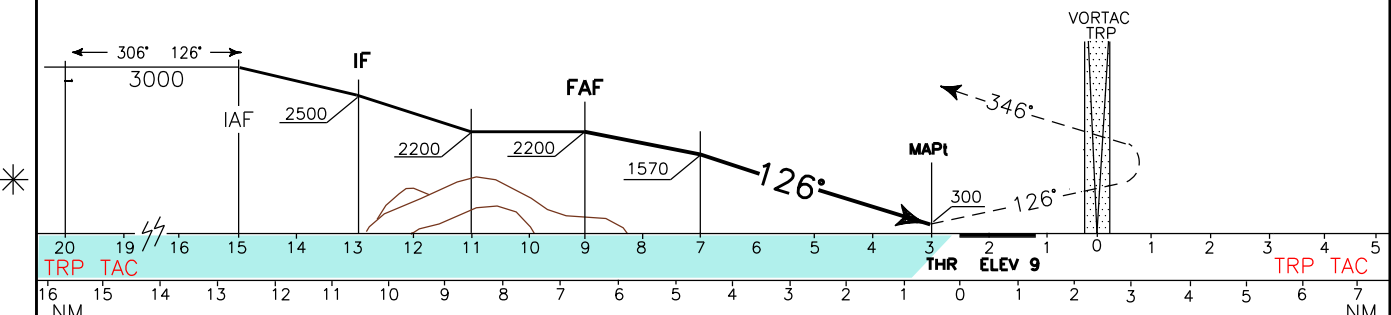
AD 2 LICIT 5-19



DOC.8168-ED.3-1986

CHANGE: CIRCLING MINIMA

TRANSITION ALT 5000 MISSED APPROACH: At 3 NM TRP TACAN climb to 3000 ft to TRP VOR. Overhead TRP VORTAC, turn right on TR 346° (IAS MAX 220 kt) to join and follow RDL 306 TRP VOR (TR 306°) until joining MORUX (RDL 306/15 NM TRP VORTAC) holding pattern. Hold on RDL 306 (TR 126°) between 15 NM and 20 NM TRP TACAN; left turns - IAS MAX 270 kt.



OCA (OCH)		A	B	C	D	<p>(1) Circling South/South West of runway only</p>	GS	FT PER MIN	DIST	ALT (HGT)	MNM SECT ALT TRP VORTAC
STRAIGHT IN APPROACH	VOR	450 (440)					70	370	8 DME	2200(2190)	
							90	480	7 DME	1890(1880)	
							110	580	6 DME	1570(1560)	
CIRCLING (1)		640 (620)		1040 (1020)		130	690	5 DME	1250(1240)		
						150	800	4 DME	930 (920)		
						170	900	3.5DME	620 (610)		
						190	1010		450 (440)		
						210	1110				