

ICAO - INSTRUMENT APPROACH CHART

AD 2 LIC 5-21

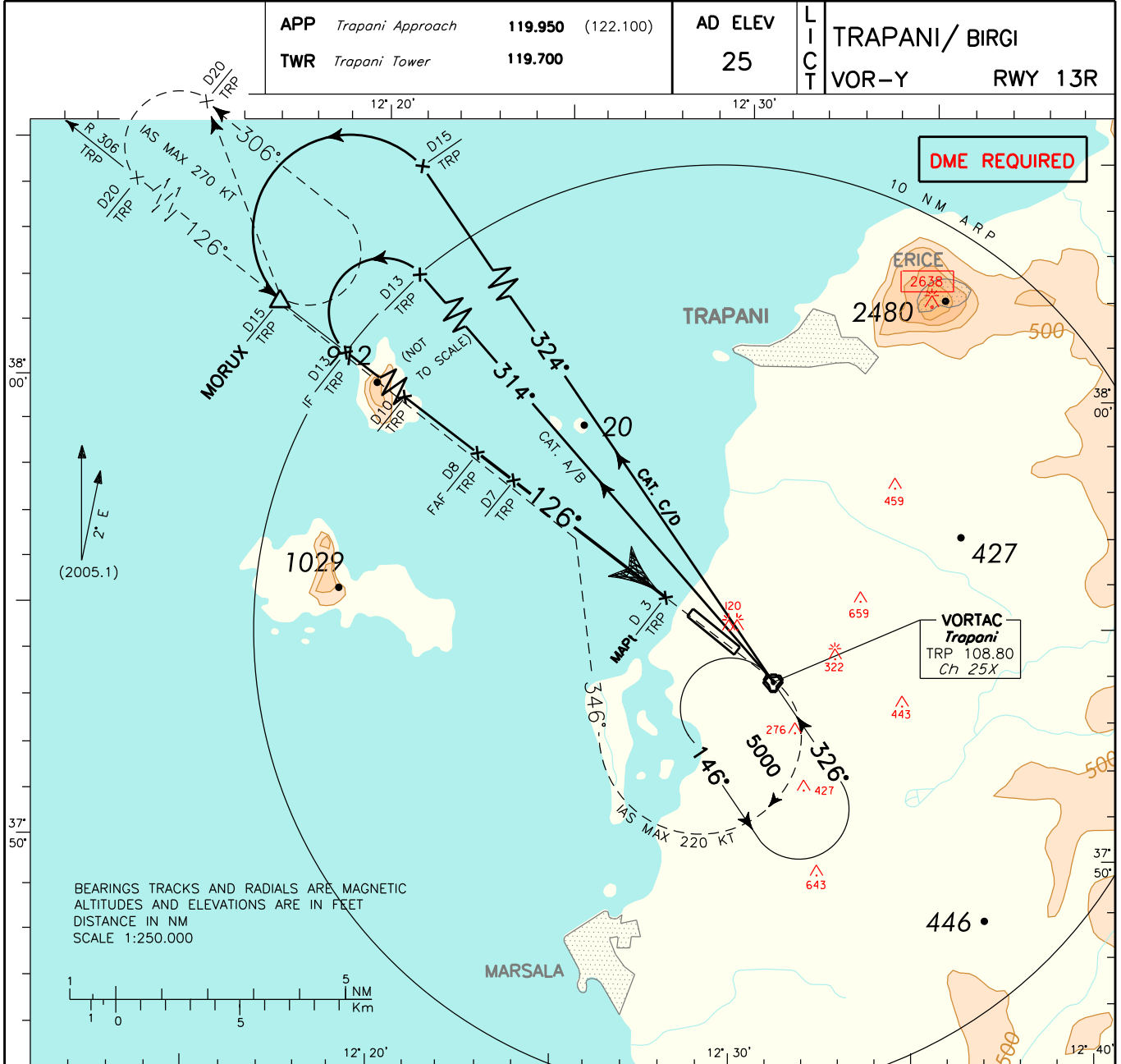
APP Trapani Approach 119.950 (122.100)
 TWR Trapani Tower 119.700

AD ELEV 25

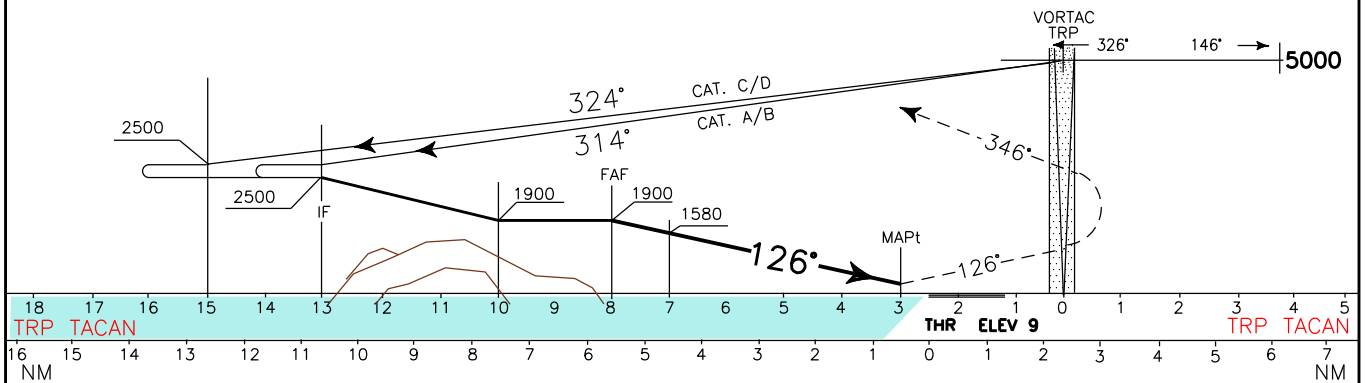
L I C T TRAPANI/ BIRGI
 VOR-Y RWY 13R

DOC.8168-ED.3-1986

CHANGE: CIRCLING MINIMA



TRANSITION ALT 5000 MISSED APPROACH: At 3 NM TRP TACAN climb to 3000 ft maintaining TR 126° to TRP VOR. Overhead TRP VORTAC, turn right TR 346° (IAS MAX 220 kt) to intercept and follow RDL 306 TRP VOR (TR 306°) until joining MORUX (RDL 306/15 NM TRP VORTAC) holding pattern.
 Hold on RDL 306 (TR 126°) between 15 NM and 20 NM TRP TACAN; left turns - IAS MAX 270 kt.



| OCA (OCH) | | A | B | C | D | (1) Circling South/South West of runway only | GS | FT PER MIN | DIST | ALT (HGT) | MNM SECT ALT | |
|-------------------------|-----|-----------|---|---|-------------|--|-------------|------------------|--------|------------|--------------|------|
| STRAIGHT IN APPROACH | VOR | 450 (440) | | | | | NOT ALLOWED | 70 | 380 | 8 DME | 1900(1890) | TRP |
| | | | | | | | | 90 | 490 | 7 DME | 1580(1570) | 3800 |
| | | | | | | | 110 | 600 | | | 090 | 270 |
| | | | | | | | 130 | 700 | 6 DME | 1260(1250) | 4000 | 4500 |
| | | | | | | | 150 | 810 | 5 DME | 940 (930) | | |
| | | | | | | | 170 | 920 | | | | |
| | | | | | | | 190 | 1030 | 4 DME | 620 (610) | | |
| CIRCLING (1) | | 640 (620) | | | 1040 (1020) | | 210 | 1140 | 3.5DME | 450 (440) | | |