

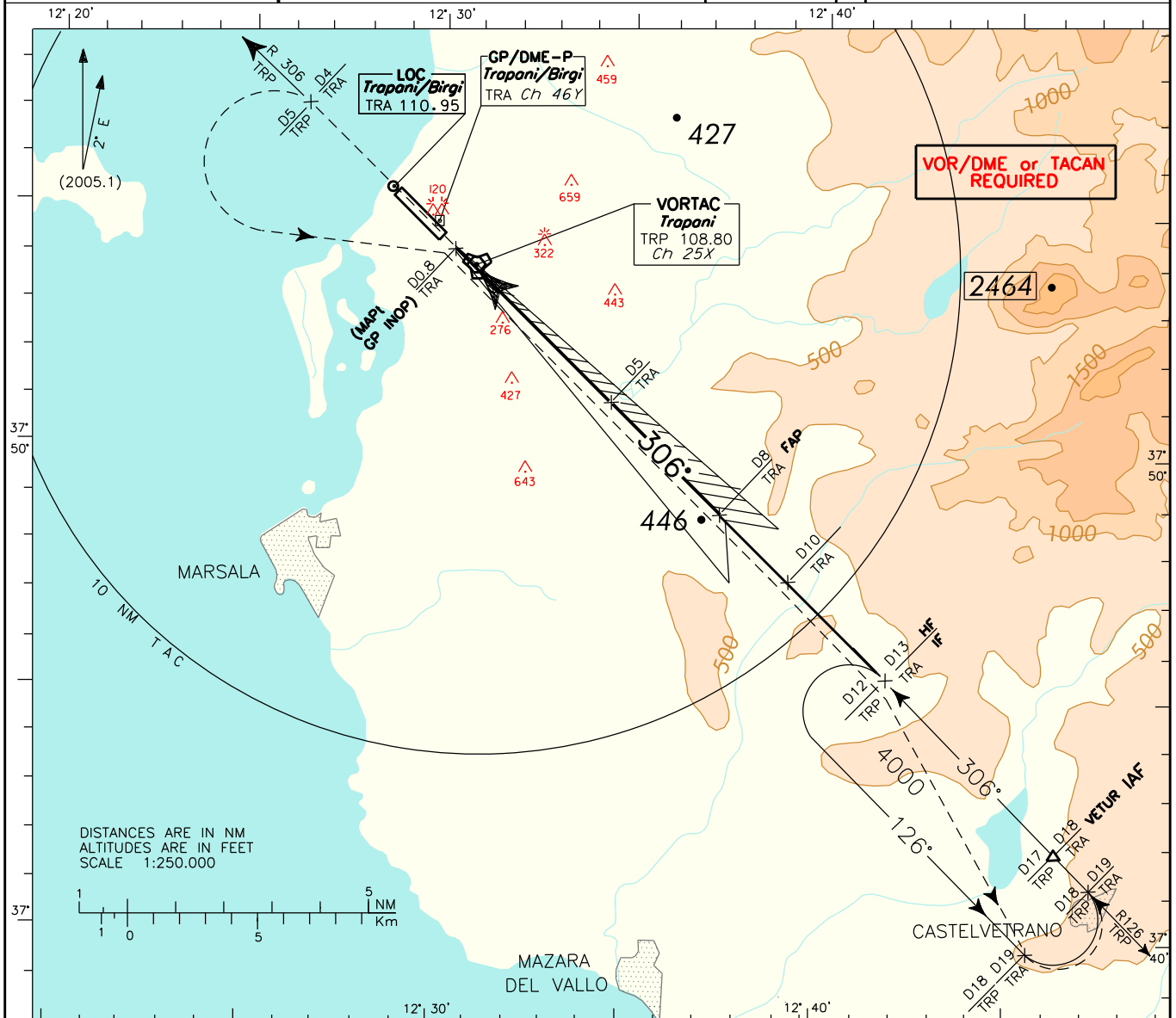
APP *Trapani Approach* 119.950 (122.100)
 TWR *Trapani Tower* 119.700

AD ELEV
 25

TRAPANI/BIRGI
 ILS or LOC-Z
 (CAT. A/B) RWY 31L

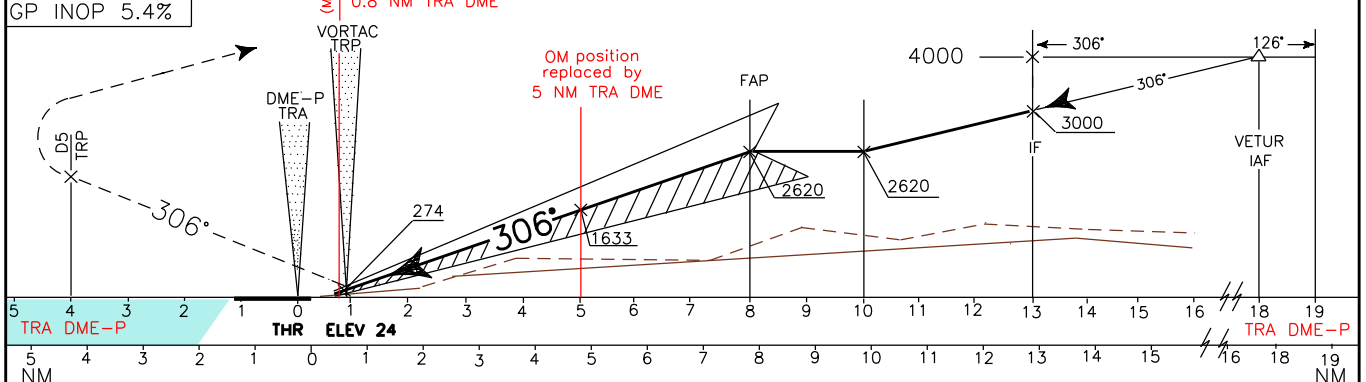
DOC.8168-ED.3-1986

CHANGE: GP INOP AND CIRCLING MINIMA



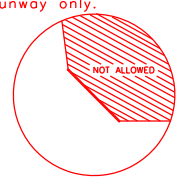
TRANSITION ALT 5000
 GP 3°
 RDH 13.88
 GP INOP 5.4%

MISSED APPROACH: Proceed on RDL 306 TRP VOR (TR 306°) and climb to 4000 ft. At 5 NM TRP TACAN, or 4 NM TRA DME, turn left bound to TRP VORTAC to leave on RDL 126, bound to holding pattern. (R126/12 NM TRP VORTAC or 13 NM TRA DME, inbound TR 306°, 4000 ft, left turns)



OCA (OCH)	A	B	C	D
STRAIGHT IN APPROACH	ILS 239 (215)	251 (227)		
	GP INOP 640 (620)			
CIRCLING (1)	640 (620)			

(1) Circling South/South West of runway only.



GS	FT PER MIN	DME TRA	ALT (HGT)
8	2620	(2600)	
70	380	7	2290 (2270)
90	490	6	1970 (1950)
110	600	5	1640 (1620)
130	710	4	1320 (1300)
150	820	3	990 (970)
170	930	2	670 (650)
190	1040	1.9	640 (620)
210	1150		

