

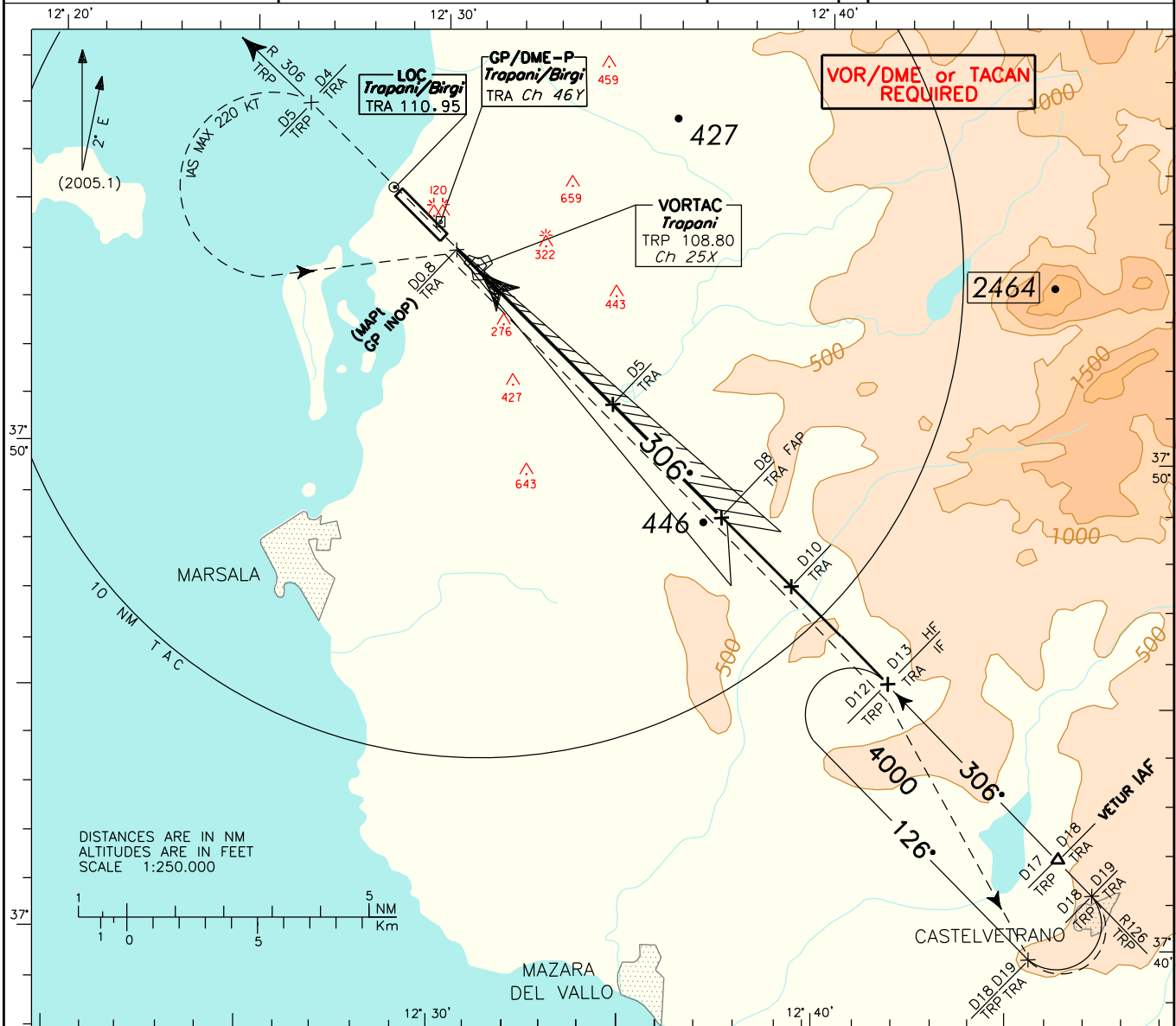
APP *Trapani Approach* 119.950 (122.100)
 TWR *Trapani Tower* 119.700

AD ELEV 25

LICIT TRAPANI/BIRGI
 ILS or LOC-Z
 (CAT. C/D) RWY 31L

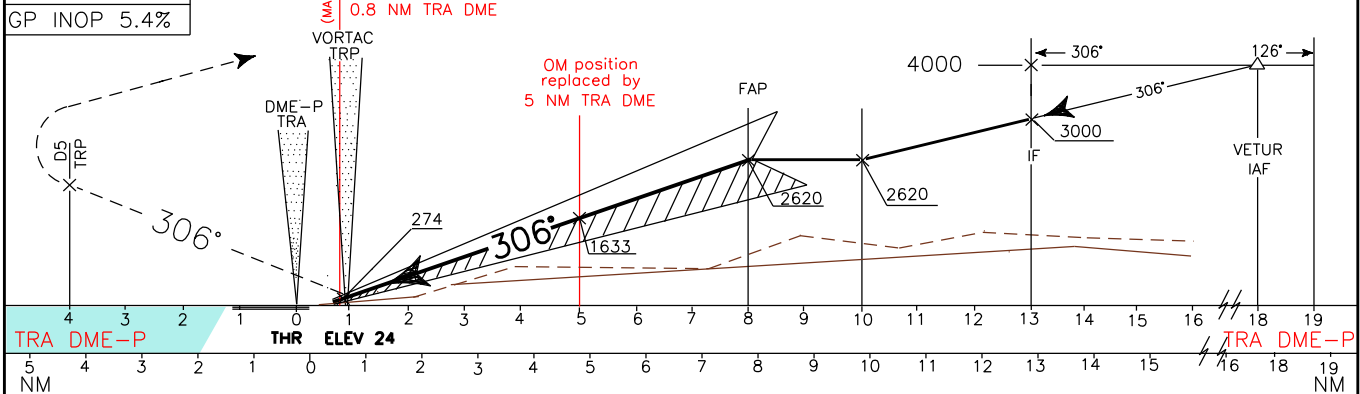
DOC.8168-ED.3-1986

CHANGE: GP INOP AND CIRCLING MINIMA



TRANSITION ALT 5000
 GP 3°
 RDH 13.88
 GP INOP 5.4%

MISSED APPROACH: Proceed on RDL 306 TRP VOR (TR 306°) and climb to 4000 ft. At 5 NM TRP TACAN, or 4 NM TRA DME, turn left (IAS MAX 220 kt) to join and follow RDL 126 TRP VOR (TR126°) to holding pattern. (R126/12 NM TRP VORTAC or 13 NM TRA DME, inbound TR 306°, 4000 ft, left turns).



STRAIGHT IN APPROACH	OCA (OCH)				(1) Circling South/South West of runway only.	GS	FT PER MIN	DME TRA	ALT (HGT)	MNM SECT ALT
	ILS	A	B	C						
ILS			259 (235)	270 (246)		70	380	7	2290 (2270)	
GP INOP			640 (620)			90	490	6	1970 (1950)	
						110	600	5	1640 (1620)	
						130	710	4	1320 (1300)	
						150	820	3	990 (970)	
						170	930	2	670 (650)	
CIRCLING (1)			1040 (1020)			190	1040	1.9	640 (620)	
						210	1150			