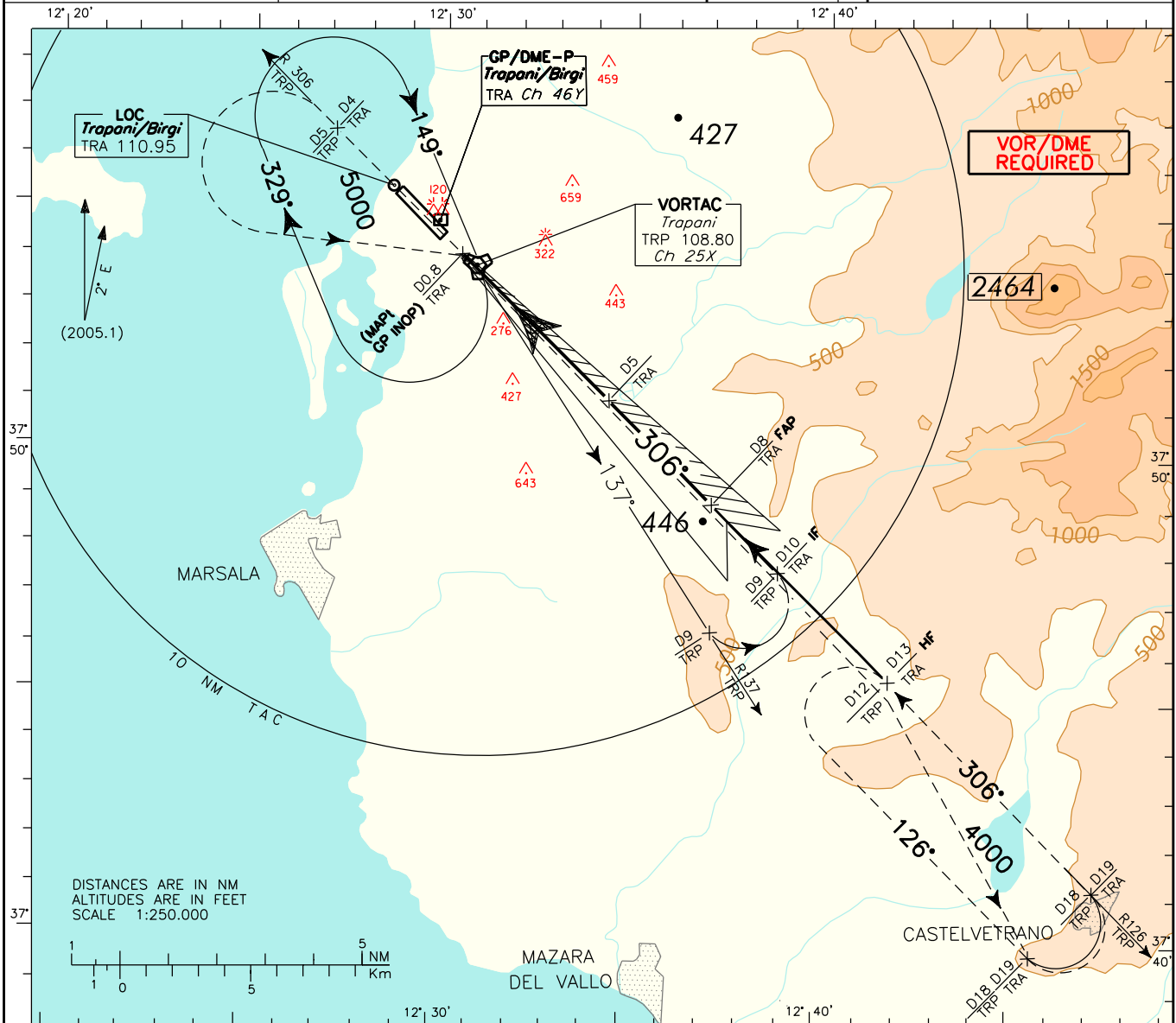
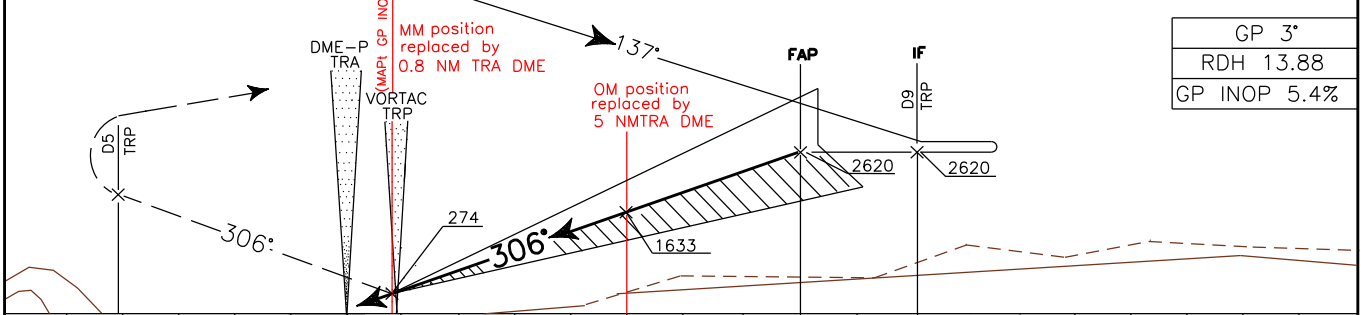


APP	Trapani Approach	119.950 (122.100)	AD ELEV	25	L I C T	TRAPANI/BIRGI
TWR	Trapani Tower	119.700				ILS or LOC-Y (CAT. A/B) RWY 31L

DOC.8168-ED.3-1986  
CHANGE: GP INOP AND CIRCLING MINIMA



TRANSITION ALT 5000  
 MISSED APPROACH: Proceed on RDL 306 TRP VOR (TR 306°) and climb to 4000 ft. At 5 NM TRP TACAN, or 4 NM TRA DME, turn left bound to TRP VORTAC to leave on RDL 126 to Missed Approach holding pattern.  
 (R126/12 NM TRP VORTAC or 13 NM TRA DME, inbound TR 306°, 4000 ft, left turns)



GP 3°
RDH 13.88
GP INOP 5.4%

DME-P TRA	THR	ELEV 24	DME-P TRA																					
6 NM	5	4	3	2	1	0	1	2	3	4	5	6	7	8	9	10	11	12	13	14	15	16	17	17 NM

OCA (OCH)	A	B	C	D
ILS	239 (215)	251 (227)		
GP INOP	640 (620)			
CIRCLING (1)	640 (620)			

(1) Circling South/South West of runway only.

GS	FT PER MIN	DME TRA	ALT (HGT)	MNM SECT ALT VORTAC	TRP
70	380	7	2290 (2270)		
90	490	6	1970 (1950)		
110	600	5	1640 (1620)		
130	710	4	1320 (1300)		
150	820	3	990 (970)		
170	930	2	670 (650)		
190	1040	1.9	640 (620)		
210	1150				

