

ICAO - INSTRUMENT APPROACH CHART

AD 2 LIC2 5-9

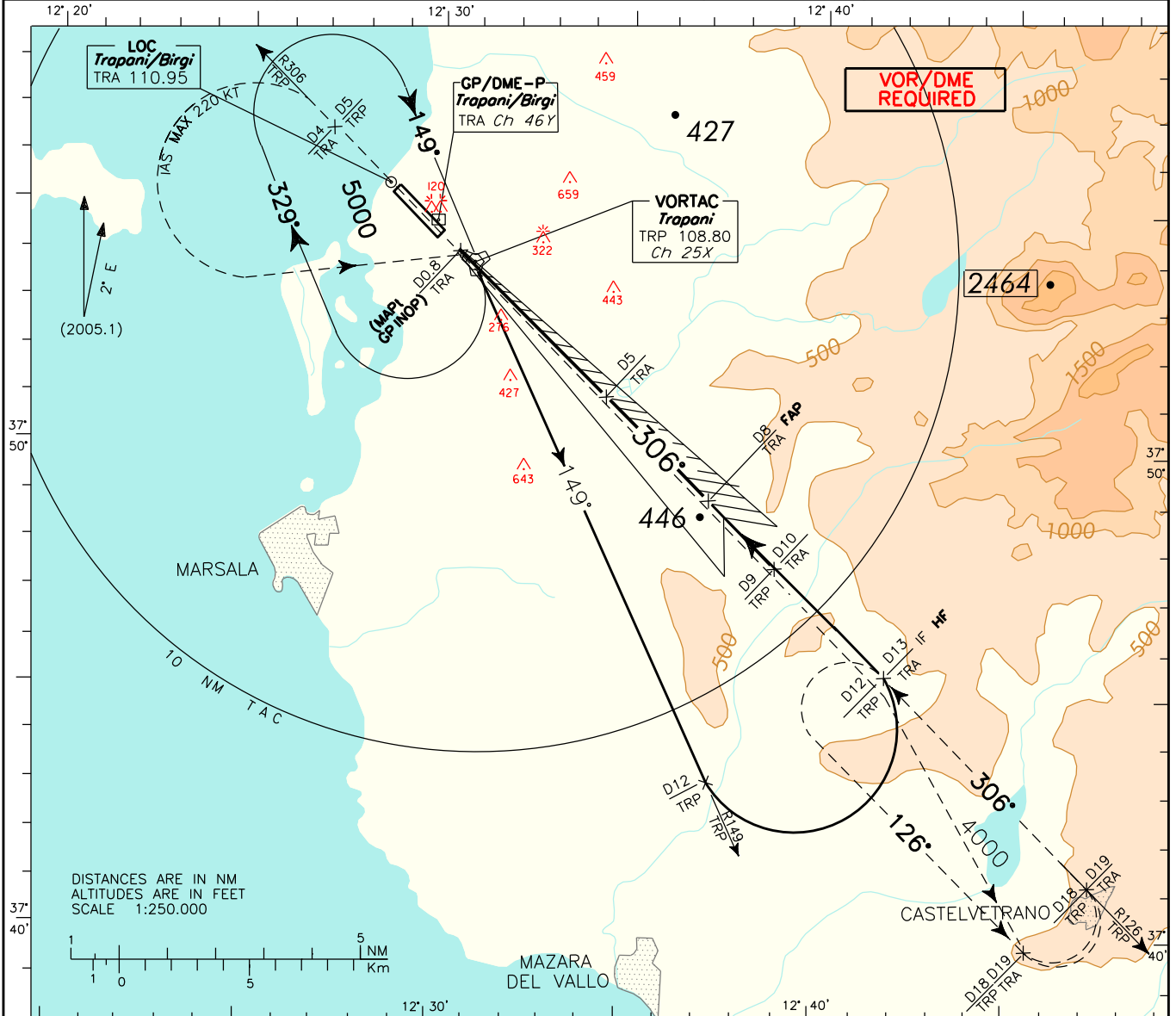
APP *Trapani Approach* 119.950 (122.100)
 TWR *Trapani Tower* 119.700

AD ELEV 25

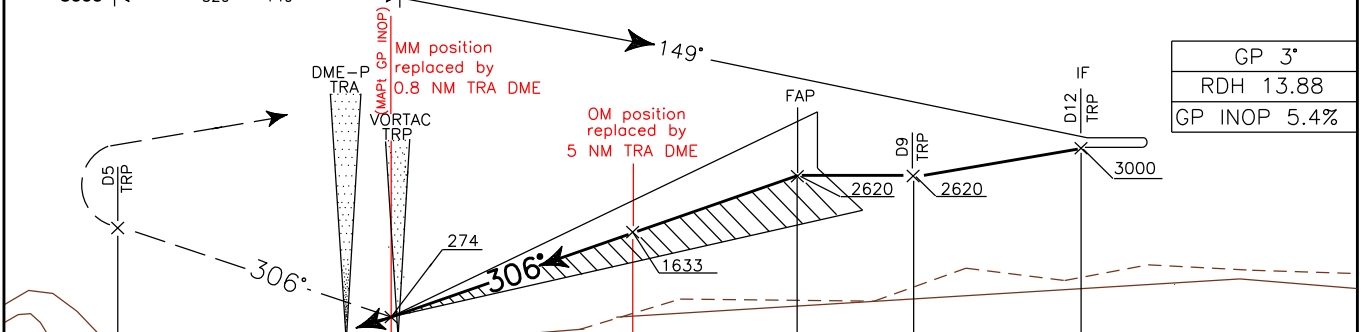
TRAPANI/BIRGI
 ILS or LOC-Y
 (CAT. C/D) RWY 31L

DOC.8168-ED.3-1986

CHANGE: GP INOP AND CIRCLING MINIMA



TRANSITION ALT 5000 MISSED APPROACH: Proceed on RDL 306 TRP VOR (TR 306°) and climb to 4000 ft. At 5 NM TRP TACAN, or 4 NM TRA DME, turn left (IAS MAX 220 kt) to join and follow RDL 126 TRP VOR (TR 126°) bound to M.A. holding pattern (R126/12 NM TRP VORTAC or 13 NM TRA DME, inbound TR 306°, 4000 ft, left turns).

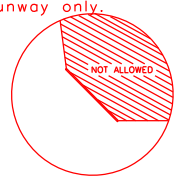


GP 3°
 RDH 13.88
 GP INOP 5.4%

TRA DME-P	THR ELEV 24	TRA DME-P
6 NM	5 4 3 2 1 0 1 2 3 4 5 6 7 8 9 10 11 12 13 14 15 16 17	17 NM

STRAIGHT IN APPROACH	OCA (OCH)	A	B	C	D
	ILS			259 (235)	270 (246)
CIRCLING (1)	GP INOP			640 (620)	
				1040 (1020)	

(1) Circling South/South West of runway only.



GS	FT PER MIN	DME TRA	ALT (HGT)
70	380	7	2290 (2270)
90	490	6	1970 (1950)
110	600	5	1640 (1620)
130	710	4	1320 (1300)
150	820	3	990 (970)
170	930	2	670 (650)
190	1040	1.9	640 (620)
210	1150		

