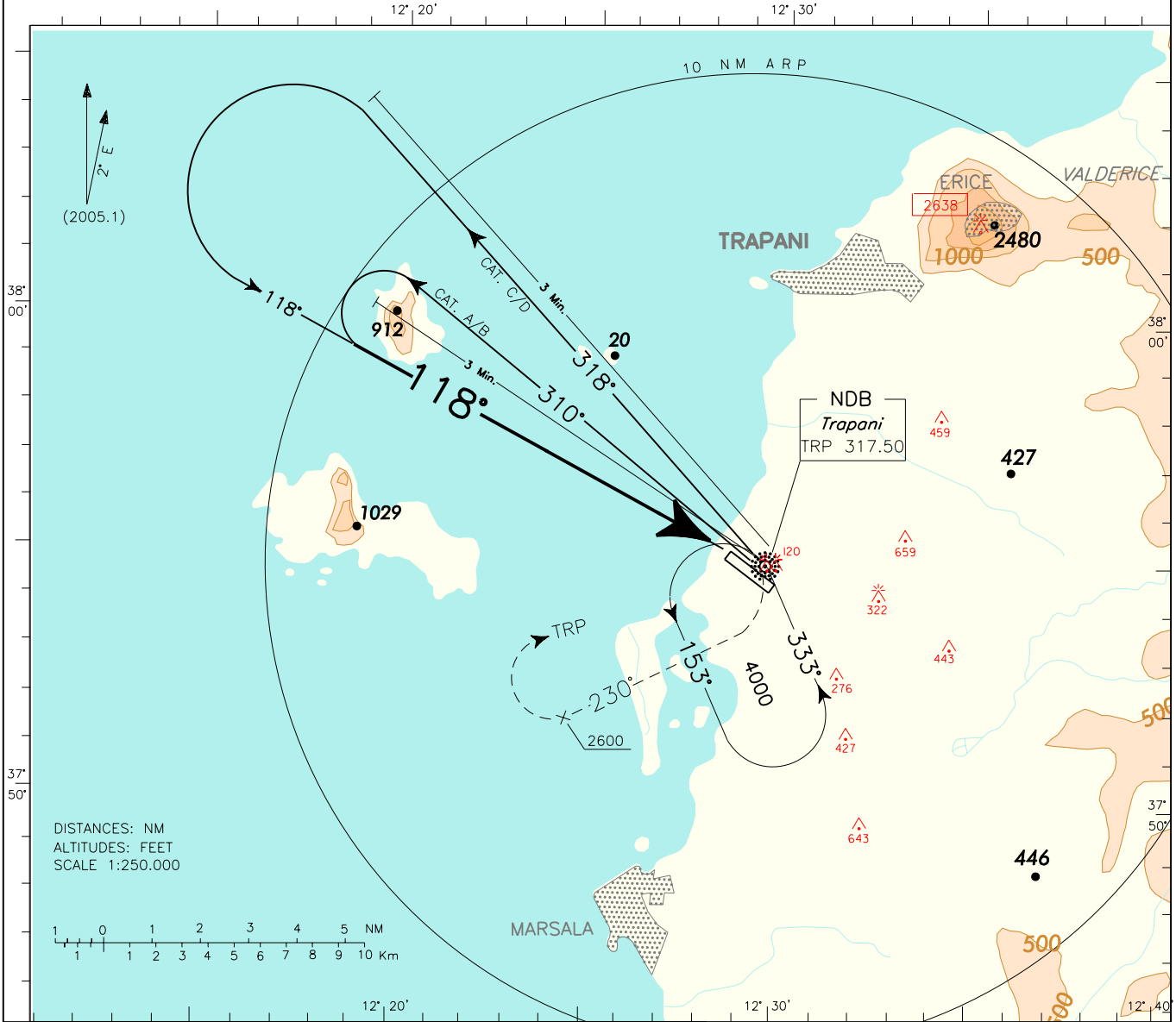


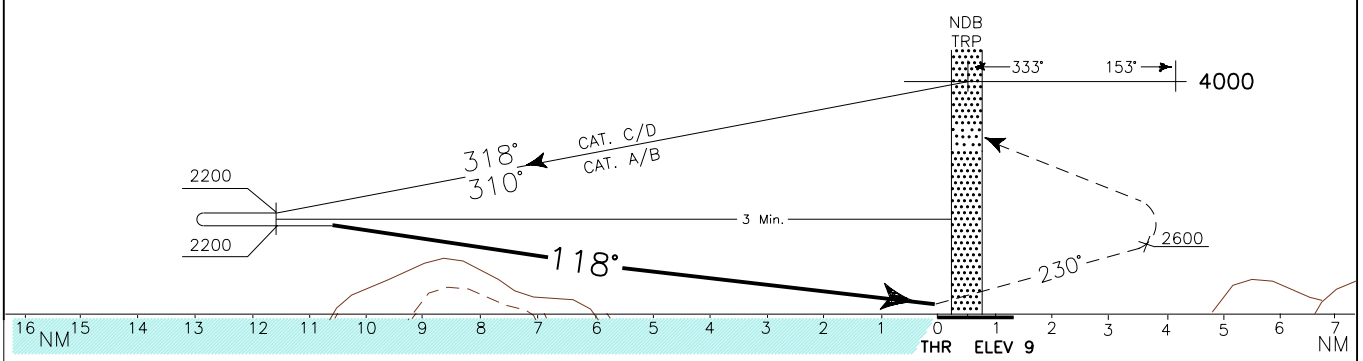
REMARK: Inbound track is off-set 8° from RWY bearing 126°.	APP <i>Trapani Approach</i>	TWR <i>Trapani Tower</i>	AD ELEV	L I C T	TRAPANI/ BIRGI
	119.950 (122.100)	119.700	25		

DOC.8168-ED.3-1986
CHANGE:RENUMBERED PAGE



TRANSITION ALT 5000

MISSED APPROACH: Passing TRP NDB turn right TR 230° climbing to 4000 ft. Leaving 2600 ft turn right bound to TRP NDB to be reached at 4000 ft. IAS MAX 250 kt.



OCA (OCH)		A	B	C	D	REMARK: For category A and B ACFT circling approach is available only.	MNM SECT ALT NDB
STRAIGHT IN APPROACH	NDB	REMARK	REMARK	1430 (1420)			
	CIRCLING		1430 (1410)				