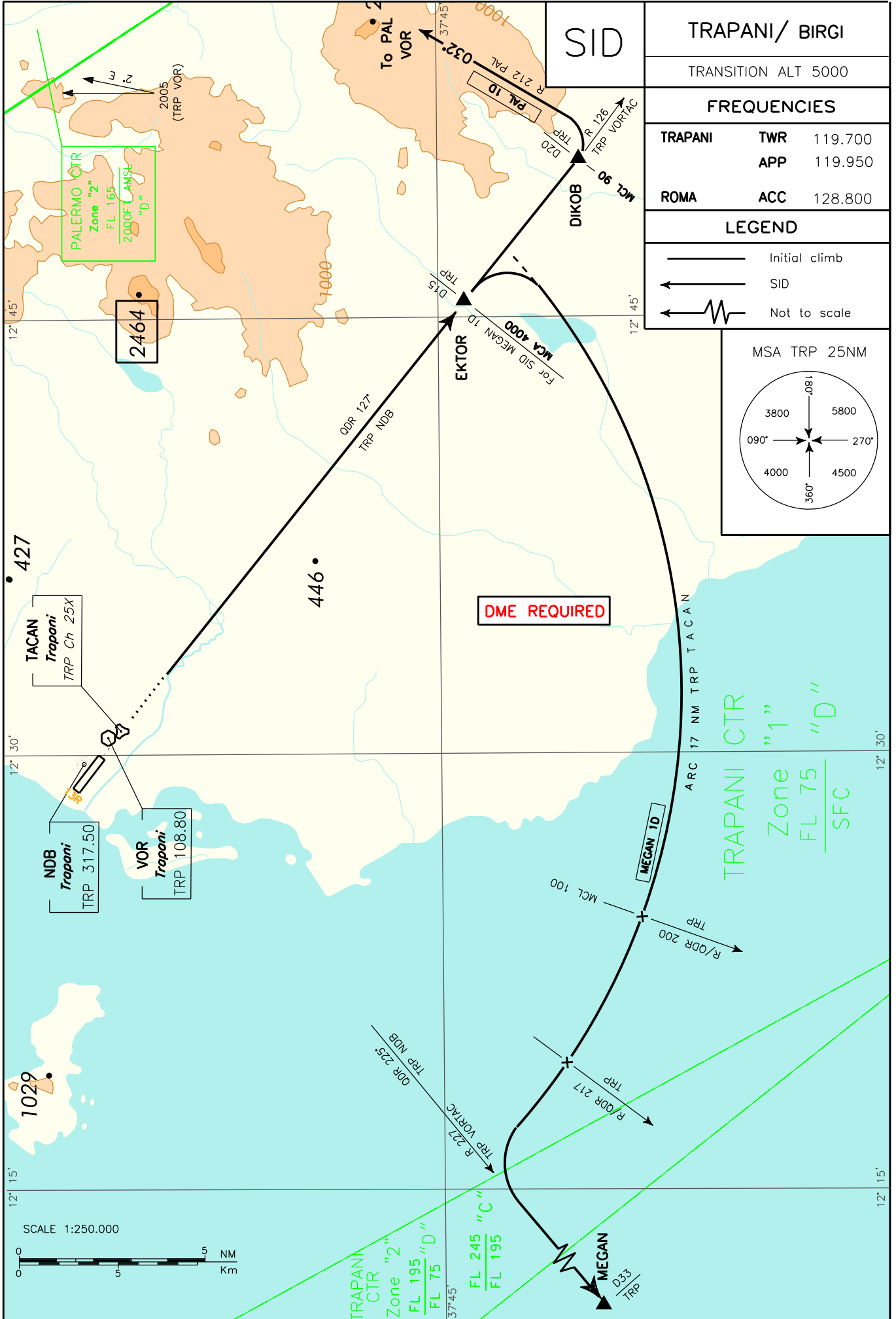
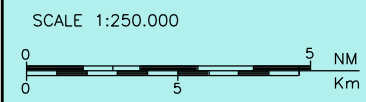
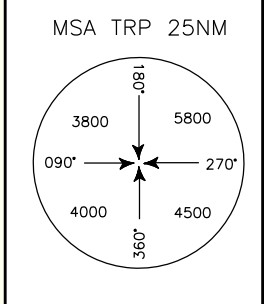


CHANGE: PALERMO CTR CLASSIFICATION MODIFIED



**SID**

<b>TRAPANI/ BIRGI</b>		
TRANSITION ALT 5000		
<b>FREQUENCIES</b>		
<b>TRAPANI</b>	<b>TWR</b>	119.700
	<b>APP</b>	119.950
<b>ROMA</b>	<b>ACC</b>	128.800
<b>LEGEND</b>		
	Initial climb	
	SID	
	Not to scale	



**DESCRIZIONE DELLE SID**

Eseguita la procedura di salita iniziale:

**MEGAN 1D**

Proseguire su RDL 126 TRP VOR (QDR 127° TRP NDB) fino al punto EKTOR, quindi virare a destra fino ad intercettare e seguire ARC 17 NM TRP TACAN. Attraversando QDR/RDL 217 TRP NDB/VOR virare a sinistra fino ad intercettare e seguire RDL 227 TRP VOR (QDR 225° TRP NDB) per il punto MEGAN (RDL 227/33 NM TRP VORTAC).

MCA/MCL: EKTOR 4000 FT; INT ARC 17 NM TRP TACAN / QDR/RDL 200 TRP NDB/VOR FL 100

**PAL 1D**

Proseguire su RDL 126 TRP VOR (QDR 127° TRP NDB) fino al punto DIKOB (RDL 126/20NM TRP VORTAC), quindi virare a sinistra fino ad intercettare e seguire RDL 212 PAL VOR (TR 032°) diretti a PAL VOR.

MCL: DIKOB FL 90.

**SIDs DESCRIPTION**

Initial climb executed:

**MEGAN 1D**

Proceed on RDL 126 TRP VOR (QDR 127° TRP NDB) until EKTOR, then turn right until joining ARC 17 NM TRP TACAN. Crossing QDR/RDL 217 TRP NDB/VOR turn left until joining RDL 227 TRP VOR (QDR 225° TRP NDB) bound to MEGAN (RDL 227/33 NM TRP VORTAC).

**PAL 1D**

Proceed on RDL 126 TRP VOR (QDR 127° TRP NDB) until DIKOB (RDL 126/20NM TRP VORTAC), then turn left until joining RDL 212 PAL VOR (TR 032°) bound to PAL VOR.

Intenzionalmente bianca

*Intentionally left blank*