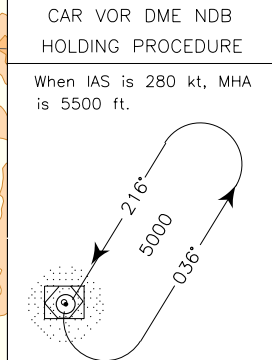


CAG L HOLDING PROCEDURE	STAR		CAGLIARI/ELMAS	
	VOR INOPERATIVE		TRANSITION ALT 6000	
		FREQUENCIES		
		Roma	ACC	132.525 (135.700)
		Cagliari APP/Cagliari RADAR		118.750 (ATC discretion 118.400)
		Elmas	TWR	120.600 122.100



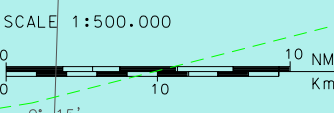
CHANGE: STAR RAMEN 1A/1C COMPLETELY WITHDRAWN. STAR LEDRO 1C MEA

LEGEND

- ← STAR
- ← - - - STAR ATC DISCRETION
- - - CTR

AIRSPACE CLASSIFICATION

SEE AIP ENR 1.4



(1) Except the airspace of AWYs
(2) Except the airspace of AWYs and Zone "1"

KOVAS 1A

KOVAS – TR 146° – CAR VOR/NDB.

KOVAS 1A

KOVAS – TR 146° – CAR VOR/NDB.

MEL/MEA: KOVAS – RDL 326/10NM CAR VOR/DME: FL 90; RDL 326/10NM CAR VOR/DME – CAR VOR/NDB: 5000 ft

KOVAS 1C (A discrezione ATC)

KOVAS – TR 176° (QDR 356° CAG L) – CAG L.

KOVAS 1C (ATC discretion)

KOVAS – TR 176° (QDR 356° CAG L) – CAG L.

MEA: KOVAS – CAG L: 5000 ft

LEDRO 1A

LEDRO – TR 216° (RDL/QDR 036 CAR VOR) – CAR VOR/NDB.

LEDRO 1A

LEDRO – TR 216° (RDL/QDR 036 CAG VOR) – CAR VOR/NDB.

MEA: LEDRO – CAR VOR/NDB: 5000 ft

LEDRO 1C (A discrezione ATC)

LEDRO – TR 260° (QDR 080° CAG L) – CAG L.

LEDRO 1C (ATC discretion)

LEDRO – TR 260° (QDR 080° CAG L) – CAG L.

MEA: LEDRO – CAG L: 6000 ft

LUKAD 1A

LUKAD – TR 307° (RDL/QDR 127 CAR VOR/NDB) – CAR VOR/NDB.

LUKAD 1A

LUKAD – TR 307° (RDL/QDR 127 CAR VOR/NDB) – CAR VOR/NDB.

MEA: LUKAD – CAR VOR/NDB: 5000 ft

LUKAD 1C (A discrezione ATC)

LUKAD – TR 307° (RDL/QDR 127 CAR VOR/NDB) – CAR VOR/NDB – TR 287° (RDL/QDR 287 CAR VOR/NDB) – CAG L.

LUKAD 1C (ATC discretion)

LUKAD – TR 307° (RDL/QDR 127 CAR VOR/NDB) – CAR VOR/NDB – TR 287° (RDL/QDR 287 CAR VOR/NDB) – CAG L.

MEA: LUKAD – CAR VOR/NDB: 5000 ft; CAR VOR/NDB – CAG L: 4000 ft

PIRIX 1A

PIRIX – TR 344° (RDL/QDR 164 CAR VOR/NDB) – CAR VOR/NDB.

PIRIX 1A

PIRIX – TR 344° (RDL/QDR 164 CAR VOR/NDB) – CAR VOR/NDB.

MEA: PIRIX – CAR VOR/NDB: 5000 ft

PIRIX 1C (A discrezione ATC)

PIRIX – TR 344° (RDL/QDR 164 CAR VOR/NDB) – CAR VOR/NDB – TR 287° (RDL/QDR 287 CAR VOR/NDB) – CAG L.

PIRIX 1C (ATC discretion)

PIRIX – TR 344° (RDL/QDR 164 CAR VOR/NDB) – CAR VOR/NDB – TR 287° (RDL/QDR 287 CAR VOR/NDB) – CAG L.

MEA: PIRIX – CAR VOR/NDB: 5000 ft; CAR VOR/NDB – CAG L: 4000 ft

TUTIP 1A

TUTIP – TR 246° (RDL/QDR 066 CAR VOR/NDB) – CAR VOR/NDB.

TUTIP 1A

TUTIP – TR 246° (RDL/QDR 066 CAR VOR/NDB) – CAR VOR/NDB.

MEA: TUTIP – CAR VOR/NDB: 5000 ft

TUTIP 1C (A discrezione ATC)

TUTIP – TR 246° (RDL/QDR 066 CAR VOR/NDB) – CAR VOR/NDB – TR 287° (RDL/QDR 287 CAR VOR/NDB) – CAG L.

TUTIP 1C (ATC discretion)

TUTIP – TR 246° (RDL/QDR 066 CAR VOR/NDB) – CAR VOR/NDB – TR 287° (RDL/QDR 287 CAR VOR/NDB) – CAG L.

MEA: TUTIP – CAR VOR/NDB: 5000 ft; CAR VOR/NDB – CAG L: 4000 ft

NEVOT 1A

NEVOT – TR 288° (RDL/QDR 108 CAR VOR/NDB) –
CAR VOR/NDB.

NEVOT 1A

NEVOT – TR 288° (RDL/QDR 108 CAR VOR/NDB) –
CAR VOR/NDB.

MEA: NEVOT – CAR VOR/NDB: 5000 ft

NEVOT 1C (A discrezione ATC)

NEVOT – TR 288° (RDL/QDR 108 CAR VOR/NDB) –
CAR VOR/NDB – TR 287° (RDL/QDR 287 CAR
VOR/NDB) – CAG L.

NEVOT 1C (ATC discretion)

TUTIP – TR 288° (RDL/QDR 108 CAR VOR/NDB) – CAR
VOR/NDB – TR 287° (RDL/QDR 287 CAR VOR/NDB) –
CAG L.

MEA: NEVOT – CAR VOR/NDB: 5000 ft; CAR VOR/NDB – CAG L: 4000 ft