

# ICAO – INSTRUMENT APPROACH CHART

AD 2 LIEE 5-11

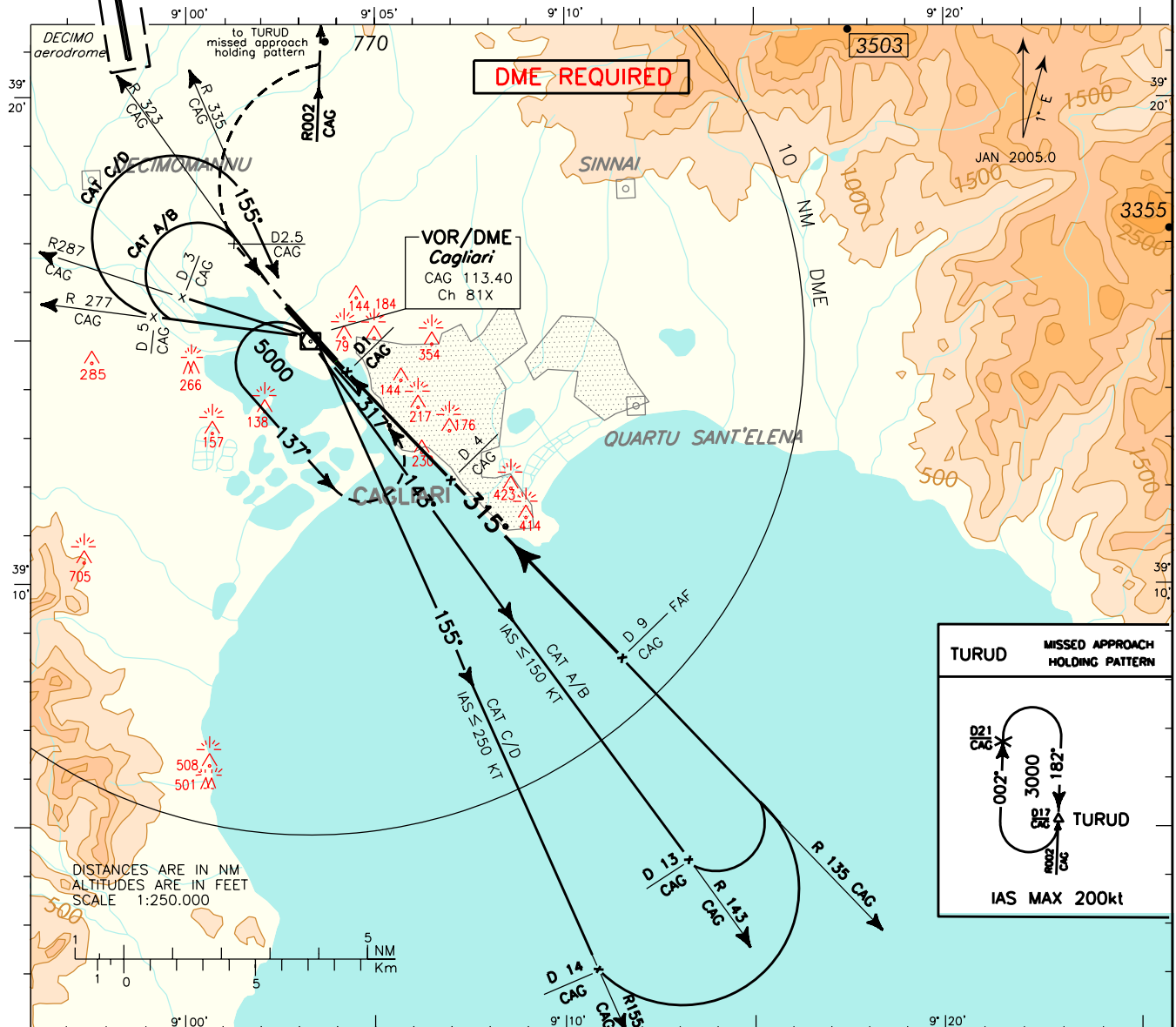
**WARNING:** Pilots shall pay attention to "DECIMO" aerodrome North-West of the field – distance 6 NM.

**APP** Cagliari Approach/RADAR **118.750**  
(118.400)  
**TWR** Elmas Tower **120.600**  
**GND** Elmas Ground **125.425**

AD ELEV **11**

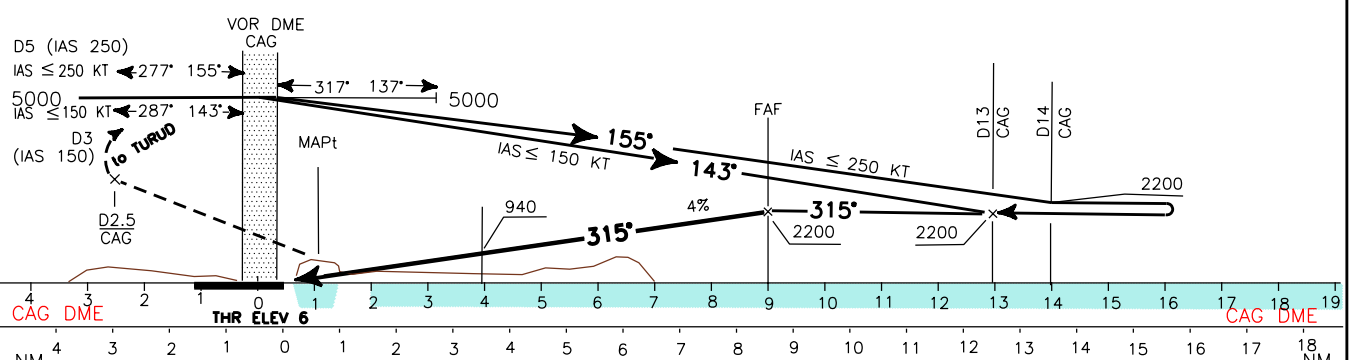
**LIEE** **CAGLIARI/ELMAS**  
**VOR-Z** **RWY 32**

DOC 8168 ED 3-1986  
CHANGE: MISSED APPROACH PROCEDURE



TRANSITION ALT 6000

**MISSED APPROACH:** Proceed runway heading climbing to 3000ft until 2.5 NM CAG DME, then turn right to join and follow R002 CAG VOR (TR002). Bound to TURUD holding pattern (HF RDL002/17NM CAG VOR/DME). Hold BTN 17NM and 21NM CAG DME INBD TR 182°, right turns, IAS MAX 200kt.



STRAIGHT IN APPROACH		OCA (OCH)				CIRCLING SECTOR 	MNM SECT ALT					
VOR		A	B	C	D		GS	FT MIN	DIST	ALT (HGT)	CAG	VOR
VOR			800 (800)			60	243	7 DME	1957 (1952)			
CIRCLING			1100 (1090)			90	365	6 DME	1714 (1709)			
						120	486	5 DME	1473 (1468)			
						150	608	4 DME	1230 (1225)			
						180	729	3 DME	987 (982)			
									744 (739)			