

ICAO - INSTRUMENT APPROACH CHART

AD 2 LIEE 5-13

WARNING: Pilots shall pay attention to "DECIMO" aerodrome North-West of the field - distance 6 NM.

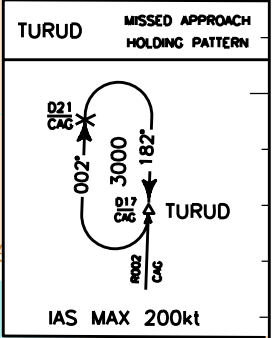
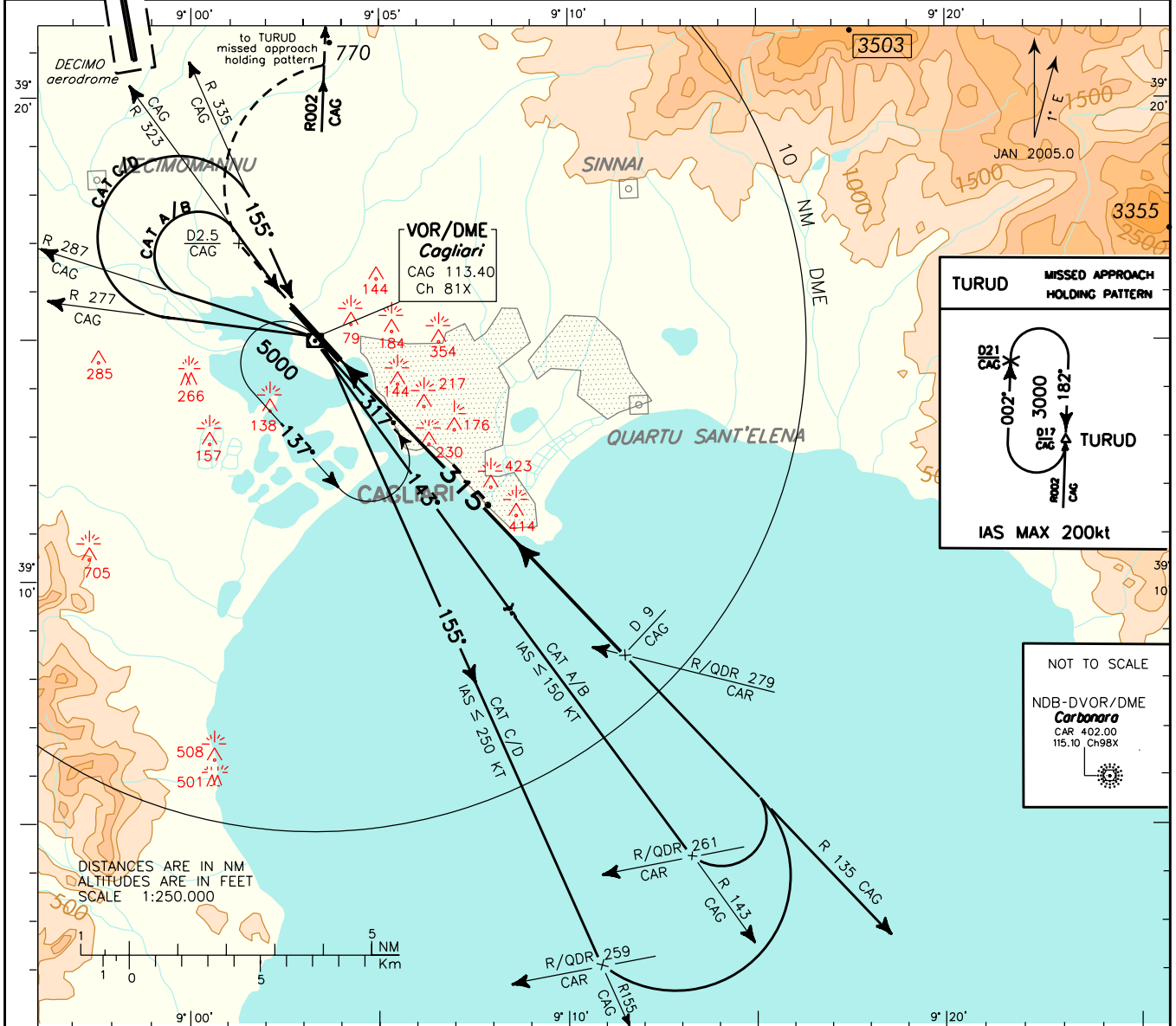
APP Cagliari Approach/RADAR 118.750 (118.400)
 TWR Elmas Tower 120.600
 GND Elmas Ground 125.425

AD ELEV 11

LIEE

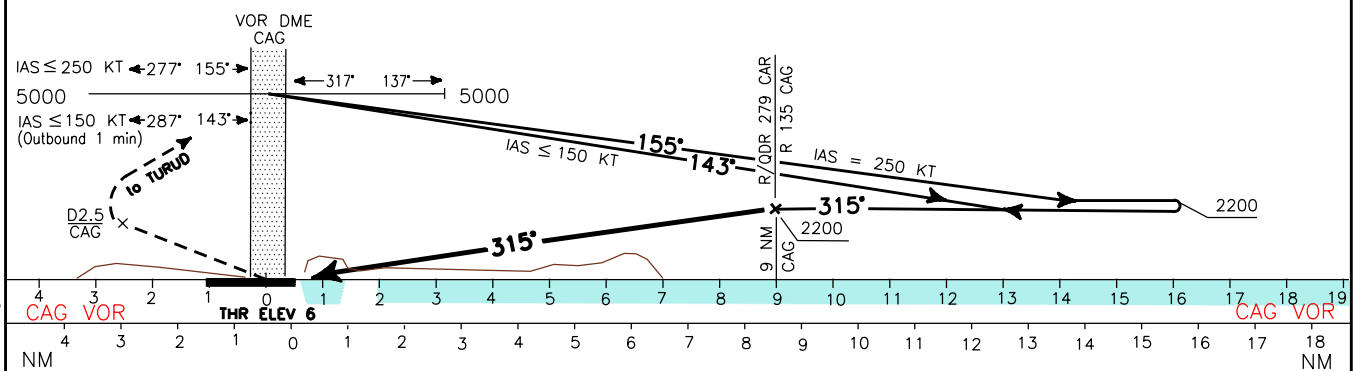
CAGLIARI/ELMAS
 VOR-Y RWY 32

DOC 8168 ED 3-1986
 CHANGE: MISSED APPROACH PROCEDURE



NOT TO SCALE
 NDB-DVOR/DME Carbonara
 CAR 402.00
 115.10 CH96X

TRANSITION ALT 6000
 MISSED APPROACH: Proceed runway heading climbing to 3000ft until 2.5 NM CAG DME, then turn right to join and follow R002 CAG VOR (TR002°) Bound to TURUD holding pattern (HF RDL002/17NM CAG VOR/DME). Hold BTN 17NM and 21NM CAG DME INBD TR 182°, right turns, IAS MAX 200kt.



CAG VOR					THR ELEV 6					CAG VOR				
NM					NM					NM				
OCA (OCH)		A	B	C	D	CIRCLING SECTOR 					MNM		SECT	ALT
STRAIGHT IN APPROACH		900 (900)									CAG		179	
CIRCLING		1100 (1090)				6100		089		5700				