

ICAO - INSTRUMENT APPROACH CHART

AD 2 LIEE 5-3

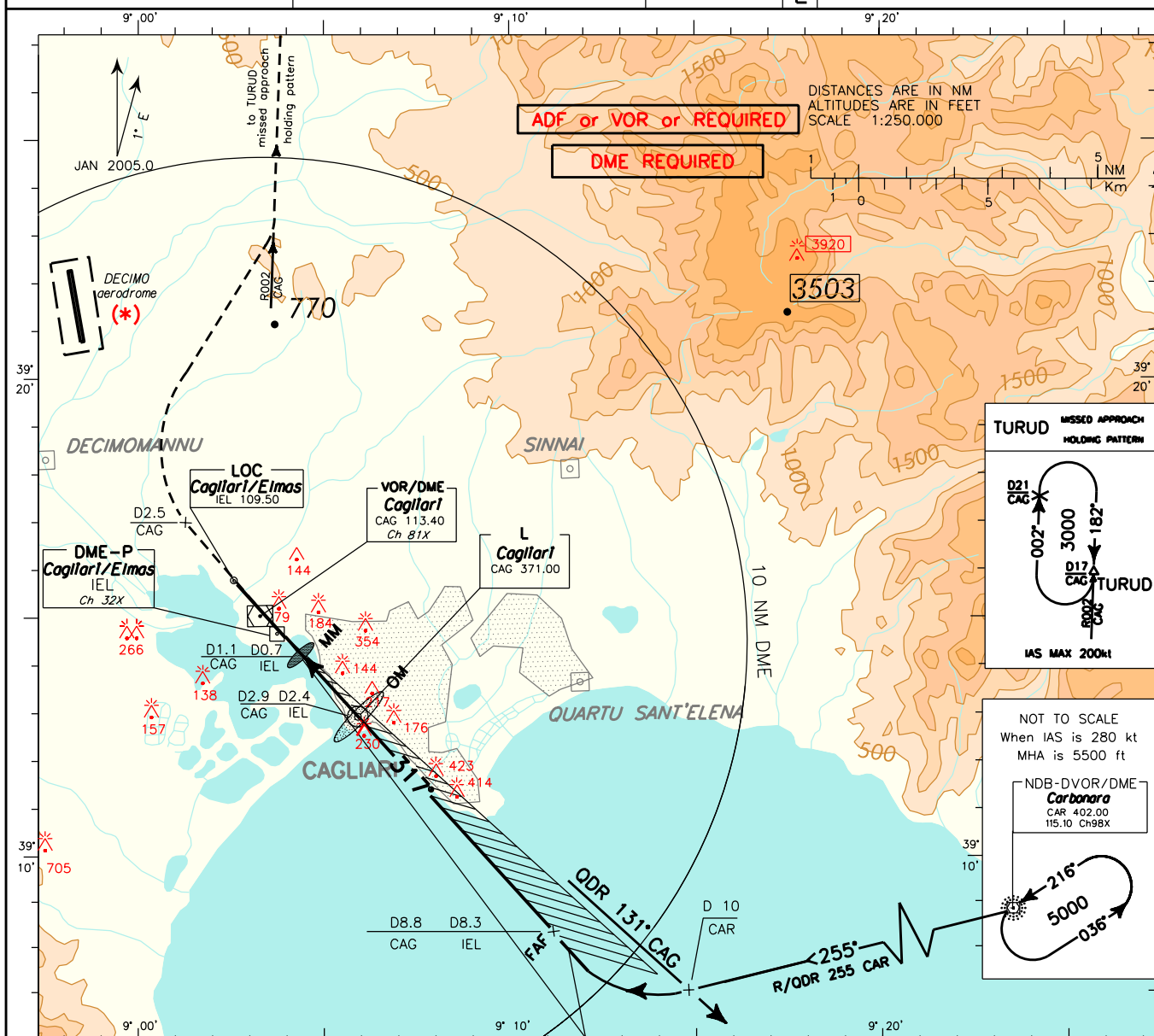
DOC 8168 ED 3-1986

(*) WARNING:
Pilots shall pay attention to "DECIMO" aerodrome North-West of the field - distance 6 NM.

APP Cagliari Approach/RADAR 118.750 (118.400)
TWR Elmas Tower 120.600
GND Elmas Ground 125.425

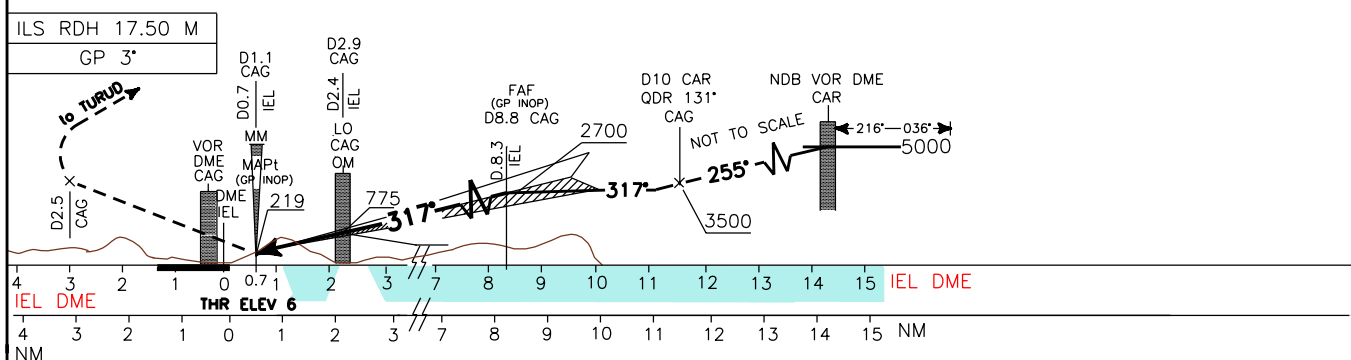
AD ELEV 11
L E E

CAGLIARI/ELMAS
ILS-Z RWY 32



CHANGE: NEW MISSED APPROACH PROCEDURE

MISSED APPROACH: Proceed runway heading climbing to 3000ft until 2.5 NM CAG DME, then turn right to join and follow R002 CAG VOR (TRO02) Bound to TURUD holding pattern (HF RDL002/17NM CAG VOR/DME. Hold BTN 17NM and 21NM CAG DME INBD TR 182°, right turns, IAS MAX 200kt.



STRAIGHT IN APPROACH	OCA (OCH)				CIRCLING SECTOR	FT PER MIN	GS	LO-MAP	DIST	ALT (HGT)	MNM SECT ALT
	A	B	C	D							
ILS	235 (229)	245 (239)	254 (248)	264 (258)		424	80	1 : 19	7.5 DME	2382 (2377)	
GP INOP	440 (440)					530	100	1 : 04	6.5 DME	2064 (2059)	
CIRCLING	1100 (1090)					636	120	0 : 53	5.5 DME	1746 (1741)	
						742	140	0 : 45	4.5 DME	1428 (1423)	
						848	160	0 : 39	3.5 DME	1110 (1105)	