

ICAO - INSTRUMENT APPROACH CHART

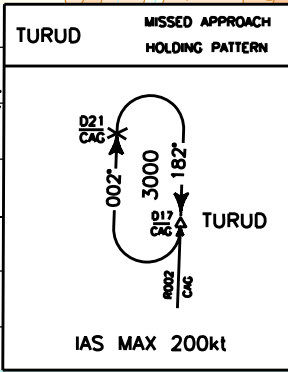
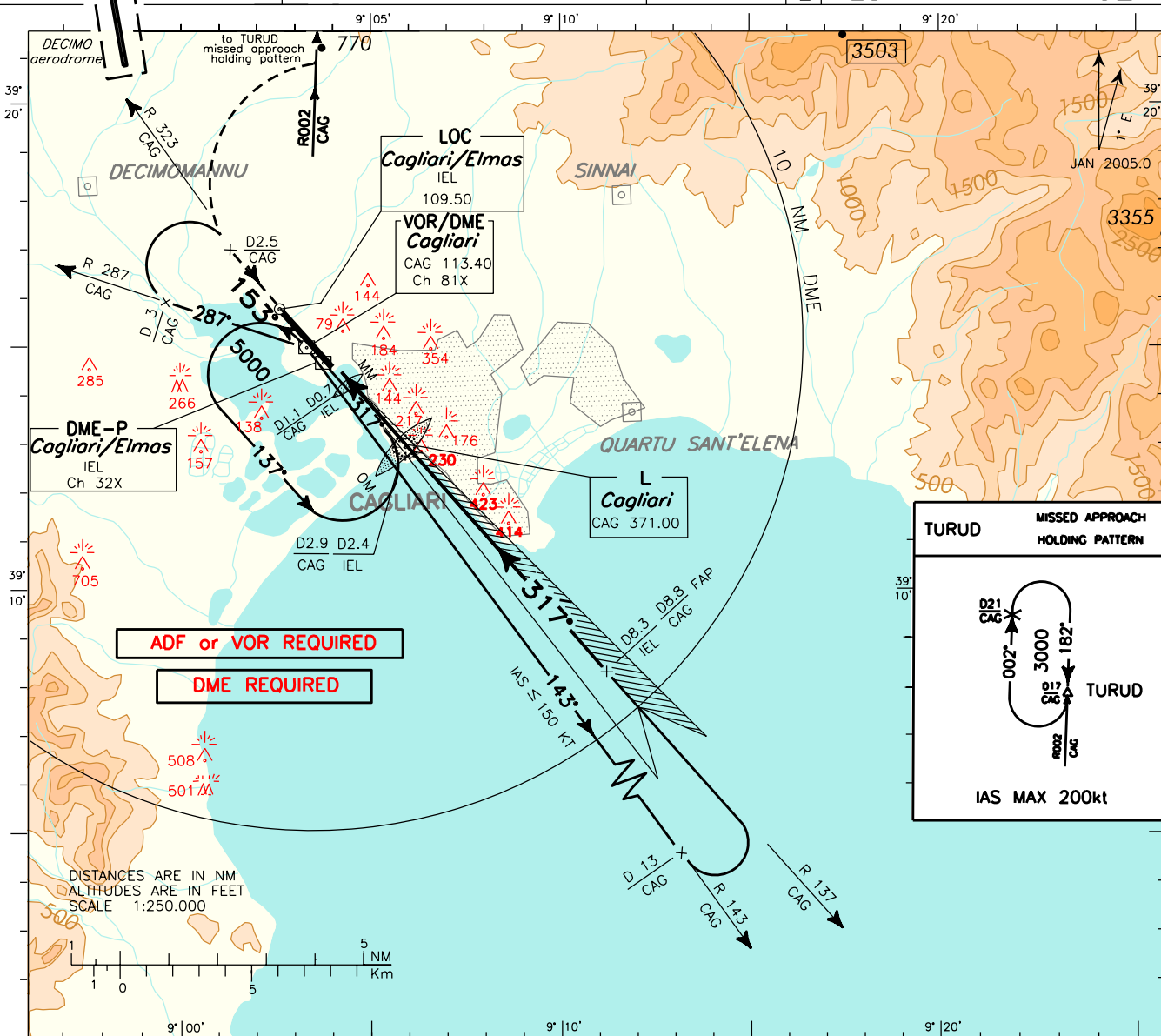
AD 2 LIEE 5-7

WARNING: Pilots shall pay attention to "DECIMO" aerodrome North-West of the field - distance 6 NM.

APP	Cagliari Approach/RADAR	118.750 (118.400)
TWR	Elmas Tower	120.600
GND	Elmas Ground	125.425

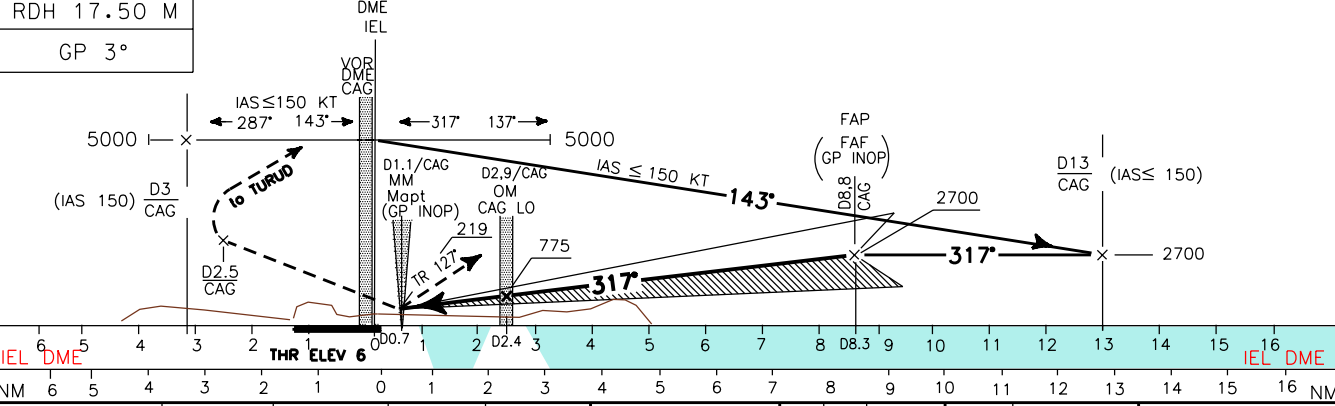
AD ELEV	11	L E E CAGLIARI/ELMAS CAT A-B ILS-X RWY 32

CHANGE: MISSED APPROACH PROCEDURE



TRANSITION ALT 6000

MISSED APPROACH: Proceed runway heading climbing to 3000ft until 2.5 NM CAG DME, then turn right to join and follow R002 CAG VOR (TR002) Bound to TURUD holding pattern (HF RDL002/17NM CAG VOR/DME). Hold BTN 17NM and 21NM CAG DME INBD TR 182°, right turns, IAS MAX 200kt.



STRAIGHT IN APPROACH	OCA (OCH)				CIRCLING SECTOR	FT PER MIN	GS	LO-MAP	DIST	ALT (HGT)	MNM CAG	SECT VOR	ALT
	A	B	C	D									
ILS CAT A-B	235 (229)	245 (239)	254 (248)	264 (258)		424	80	1 : 19	7.5DME	2382 (2377)			
LOC	440 (440)					530	100	1 : 04	6.5DME	2064 (2059)			
						636	120	0 : 53	5.5DME	1746 (1741)			
						742	140	0 : 45	4.5DME	1428 (1423)			
CIRCLING	1100 (1090)					848	160	0 : 39	3.5DME	1110 (1105)			