

ICAO – INSTRUMENT APPROACH CHART

AD 2 LIEE 5-9

WARNING: Pilots shall pay attention to "DECIMO" aerodrome North-West of the field – distance 6 NM.

APP Cagliari Approach/RADAR 118.750 (118.400)
 TWR Elmas Tower 120.600
 GND Elmas Ground 125.425

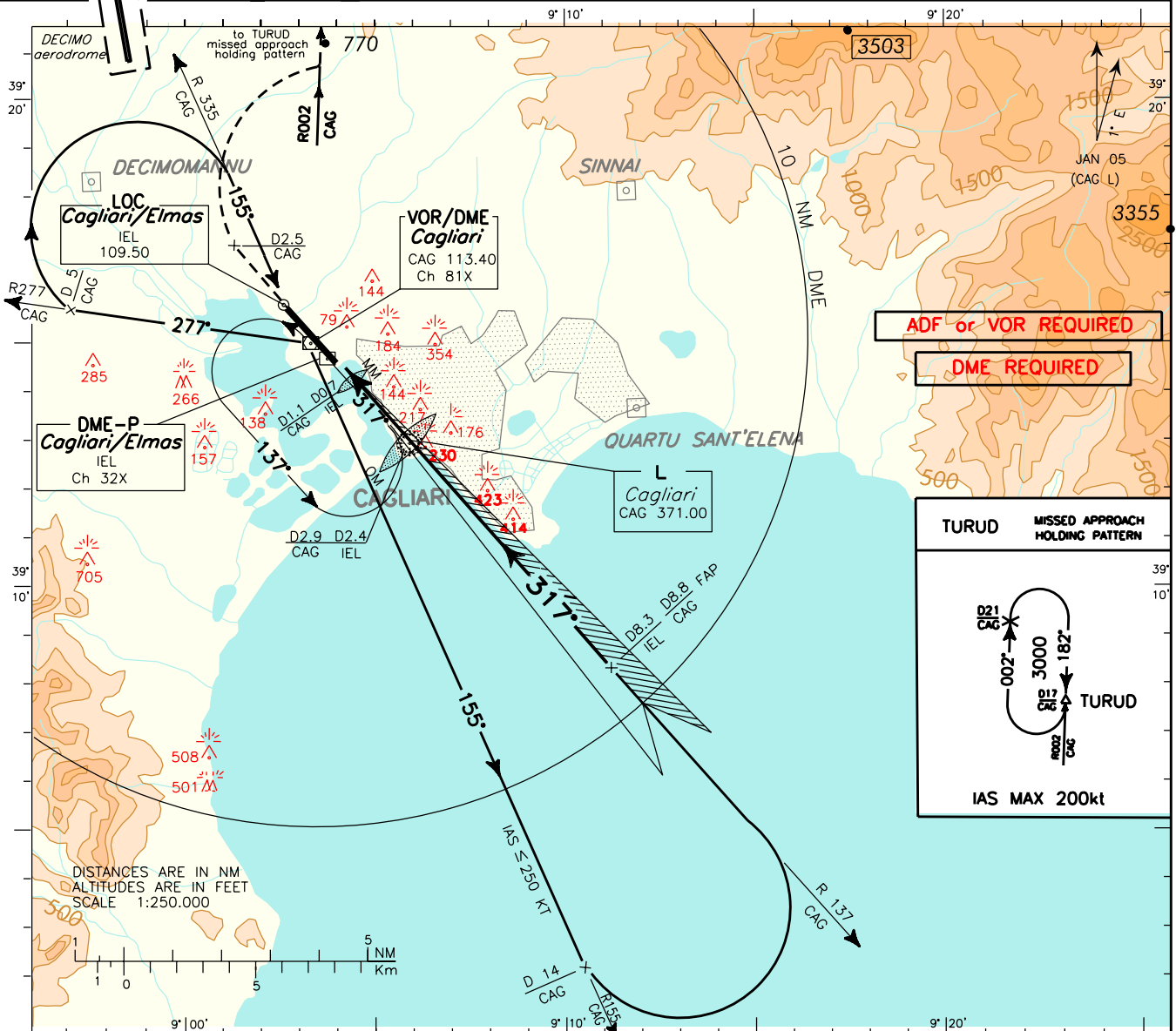
AD ELEV 11

L I E E

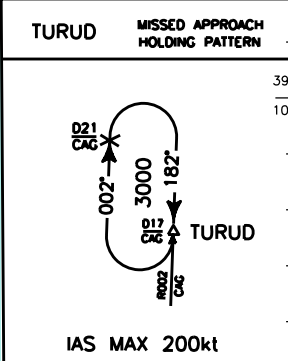
CAGLIARI/ELMAS
 CAT C-D
 ILS-X RWY 32

DOC 8168 ED 4-1993-AMDT 11

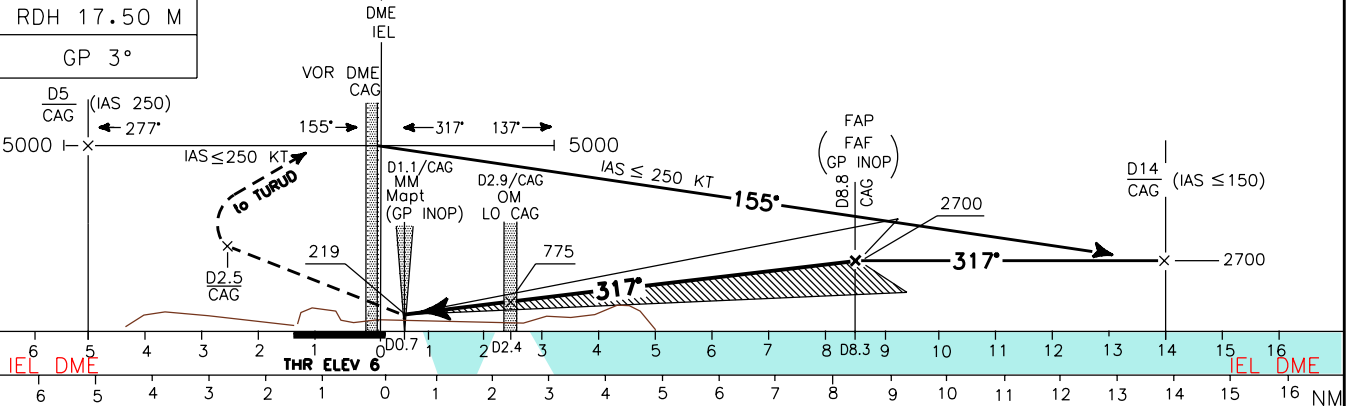
CHANGE: MISSED APPROACH PROCEDURE



ADF or VOR REQUIRED
DME REQUIRED



MISSED APPROACH: Proceed runway heading climbing to 3000ft until 2.5 NM CAG DME, then turn right to join and follow R002 CAG VOR (TR002°) Bound to TURUD holding pattern (HF RDL002/17NM CAG VOR/DME). Hold BTN 17NM and 21NM CAG DME INBD TR 182°, right turns, IAS MAX 200kt.



STRAIGHT IN APPROACH	OCA (OCH)				CIRCLING SECTOR	FT PER MIN	GS	LO-MAP	DIST	ALT (HGT)	MNM CAG	SECT VOR	ALT
	A	B	C	D									
ILS	235 (229)	245 (239)	254 (248)	264 (258)		424	80	1 : 19	7.5DME	2382 (2377)			
CAT C-D						530	100	1 : 04	6.5DME	2064 (2059)			
LOC			440 (440)			636	120	0 : 53	5.5DME	1746 (1741)			
					742	140	0 : 45	4.5DME	1428 (1423)				
CIRCLING			1100 (1090)		848	160	0 : 39	3.5DME	1110 (1105)				