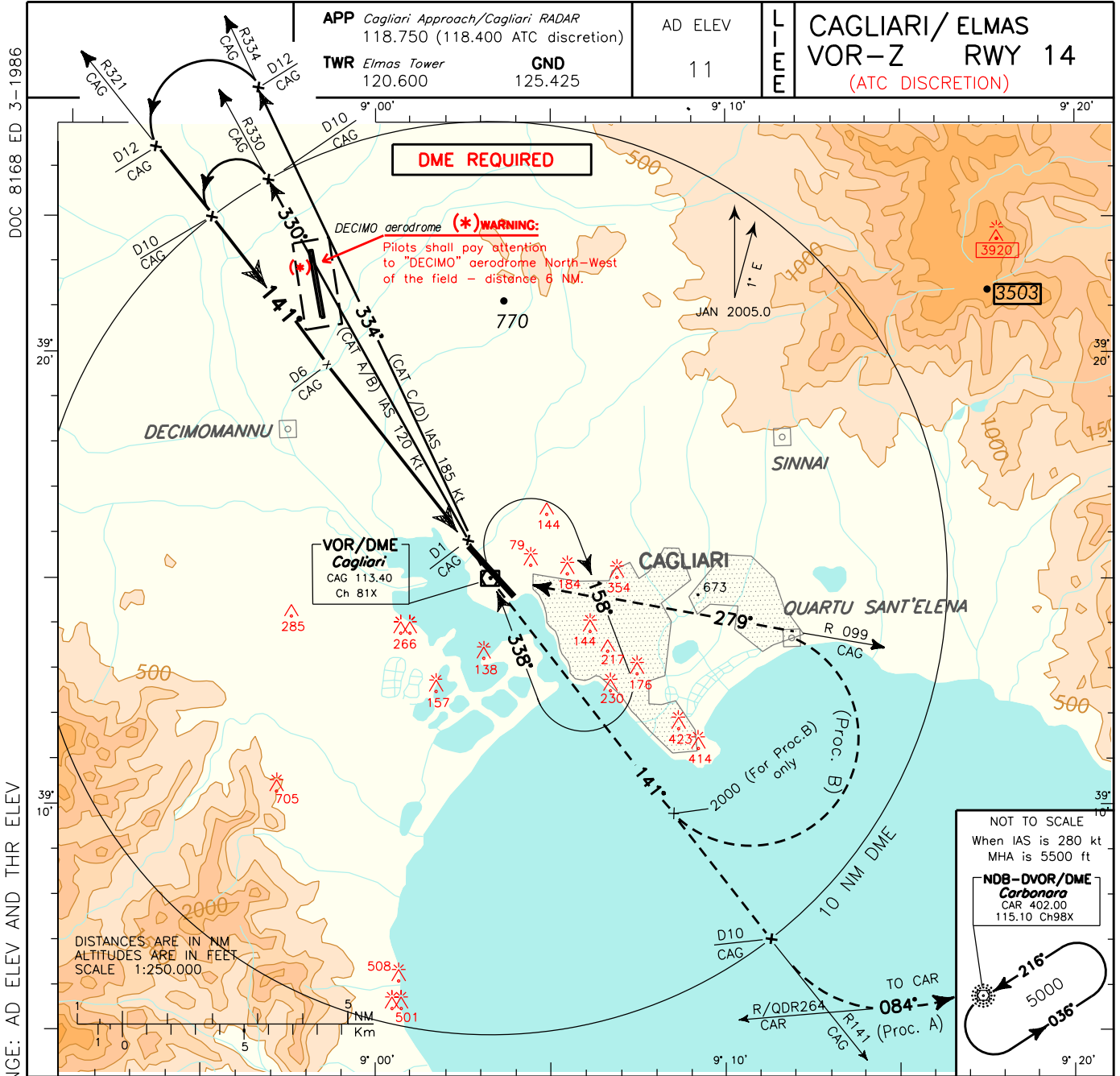


ICAO – INSTRUMENT APPROACH CHART

AD 2 LIEE 5-17



DOC 8168 ED 3-1986

CHANGE: AD ELEV AND THR ELEV

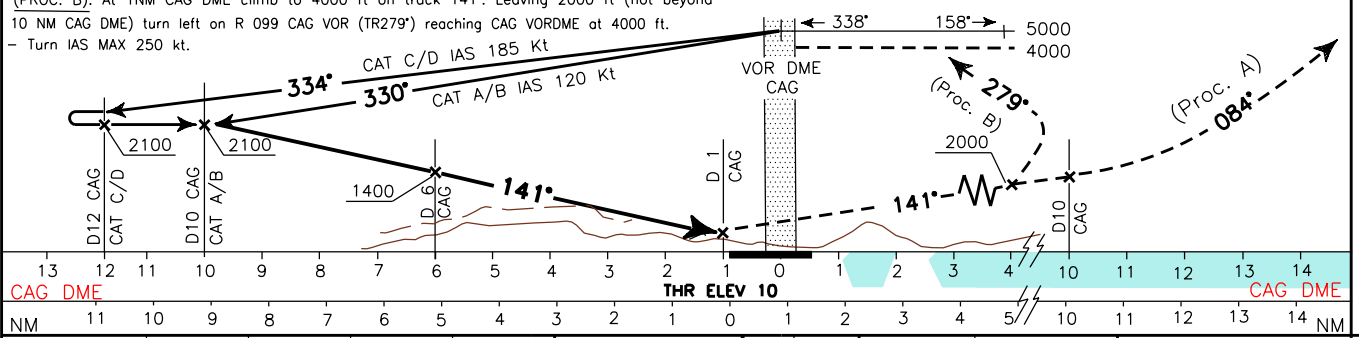
TRANSITION ALT 6000

MISSED APPROACH: (PROC. A): Proceed on track 141° (R141 CAG VOR) climbing to 5000 ft. AT 10 NM CAG DME turn left to intercept and follow R/QDR 264 CAR VOR/NDB (TR 084°) until joining CAR VOR/NDB holding pattern.

- Turn IAS MAX 250 kt
- MNM climb gradient 3.5%; or, if unable, follow TYPE B Procedure and advise ATC.

(PROC. B): At 1NM CAG DME climb to 4000 ft on track 141°. Leaving 2000 ft (not beyond 10 NM CAG DME) turn left on R 099 CAG VOR (TR279°) reaching CAG VORDME at 4000 ft.

- Turn IAS MAX 250 kt.



STRAIGHT IN APPROACH	OCA (OCH)				CIRCLING SECTOR	GS	FT PER MIN	DIST	ALT (HGT)	MNM SECT ALT	
	A	B	C	D						CAG	VOR DME
VOR	570 (570)					60	260	5 DME	1400 (1391)		
						90	390	4 DME	880 (871)		
						120	520	3 DME	620 (611)		
						150	650	2 DME	360 (351)		
CIRCLING	1100 (1090)				180	780	1 DME	100 (91)			