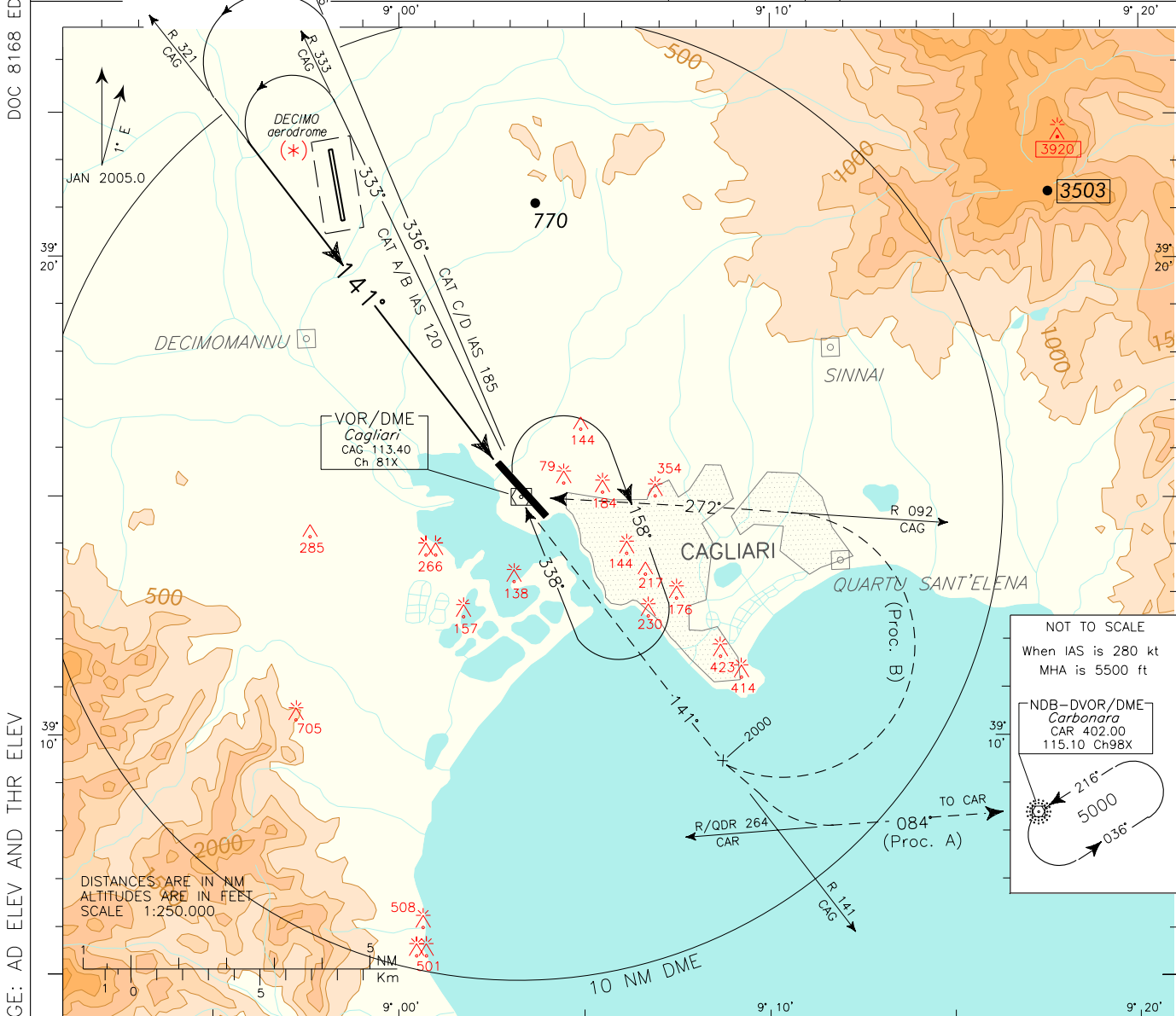


ICAO – INSTRUMENT APPROACH CHART

AD 2 LIEE 5-19

DOC 8168 ED 3-1986

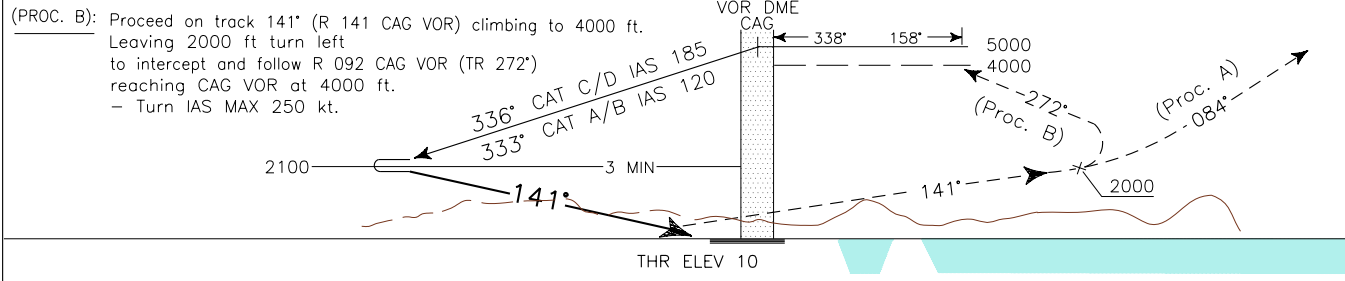
<p>(*) WARNING: Pilots shall pay attention to "DECIMO" aerodrome North-West of the field – distance 6 NM.</p>	<p>APP Cagliari Approach/Cagliari RADAR 118.750 (118.400 ATC discretion)</p> <p>TWR Elmas Tower GND 120.600 125.425</p>	<p>AD ELEV 11</p>	<p>L I E E</p>	<p>CAGLIARI/ ELMAS</p> <p>VOR-Y RWY 14 (ATC DISCRETION)</p>
--	---	-----------------------	----------------------------	--



CHANGE: AD ELEV AND THR ELEV

TRANSITION ALT 6000

MISSED APPROACH: (PROC. A): Proceed on track 141° (R141 CAG VOR) climbing to 5000 ft. Leaving 2000 ft turn left to intercept and follow R/QDR 264 CAR VOR/NDB (TR 084°) until joining CAR VOR NDB holding pattern.
 - Turn IAS MAX 250 kt.
 - MNM climb gradient 3.5%; or, if unable, follow M. A. TYPE B Procedure and advise ATC.



* NM 11 10 9 8 7 6 5 4 3 2 1 0 1 2 3 4 5 6 7 8 9 10 NM

	OCA (OCH)	A	B	C	D	<p style="color: red;">CIRCLING SECTOR</p>	<p>MNM SECT ALT VOR</p>
STRAIGHT IN APPROACH	VOR	930 (930)					
CIRCLING	1100 (1090)						