

ICAO – INSTRUMENT APPROACH CHART

AD 2 LIEE 5-5

DOC 8168 ED 3-1986

CHANGE: CHART UPDATED

(1) WARNING:

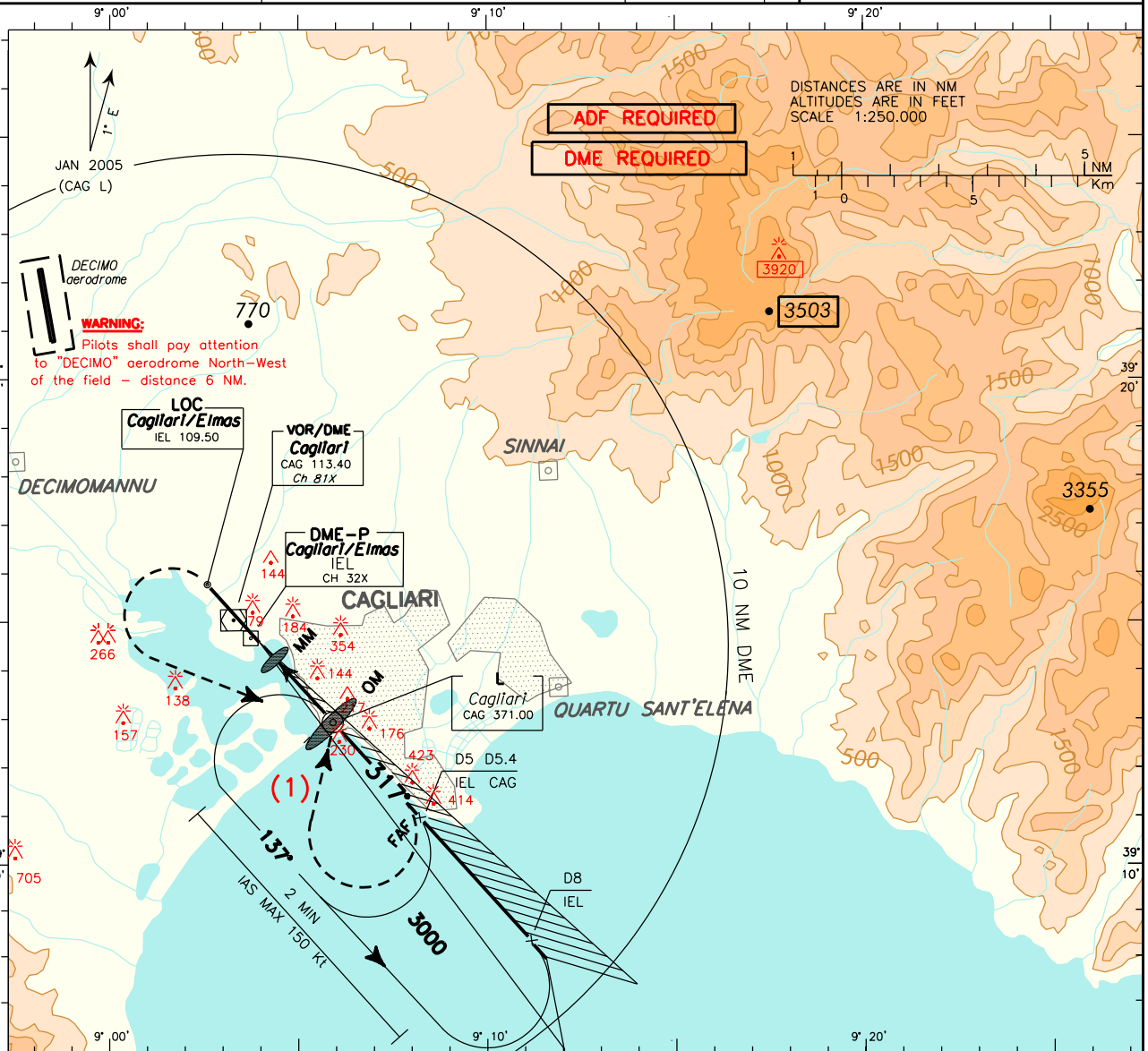
CAG LO HOLDING WITH IAS MAX > 210 kt, M.A.
AS FOLLOWS:
- IAS MAX 230 kt; MHA 3500 ft.
- IAS MAX 280 kt; MHA 4000 ft.

APP Cagliari Approach/Cagliari RADAR
118.750 (118.400 ATC discretion)
TWR Elmas Tower
120.600
GND 125.425

AD ELEV
11

LIEE

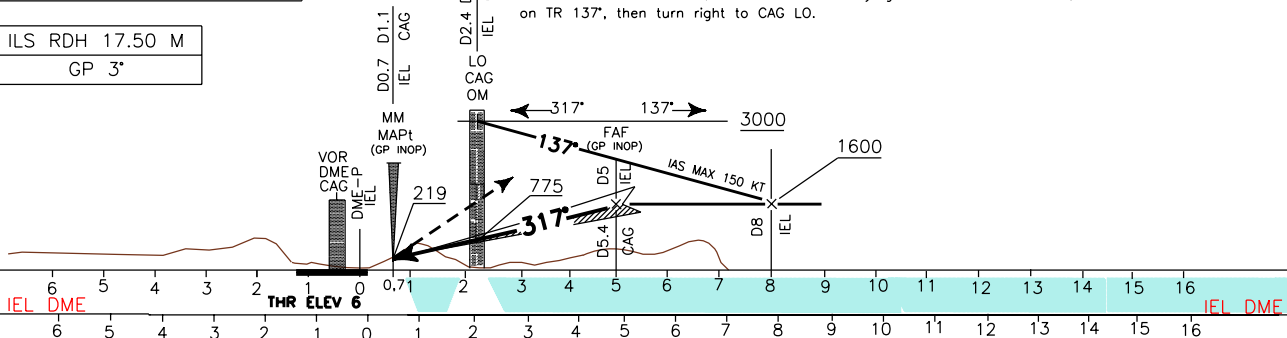
CAGLIARI/ELMAS
ILS-Y RWY 32



TRANSITION ALT 6000

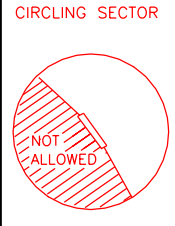
MISSED APPROACH:

Continue on QDR 317° CAG climbing to 3000 ft. Passing 500 ft (in any case after overflying MM) turn left IAS MAX 170 kt, to CAG LO. If overflying CAG LO below 3000 ft, continue climb until 3000 ft on TR 137°, then turn right to CAG LO.



IEL DME 6 5 4 3 2 1 0 1 2 3 4 5 6 7 8 9 10 11 12 13 14 15 16 IEL DME NM

OCA (OCH)		A	B	C	D
STRAIGHT IN APPROACH	ILS	235 (229)	245 (239)	254 (248)	264 (258)
	GP INOP	440 (440)			
CIRCLING		1100 (1090)			



FT PER MIN	GS	LO-MAP		DIST	ALT (HGT)
		LO-MAP	1.77 NM		
424	80	1 : 19	5 DME	1600 (1595)	
530	100	1 : 04	4 DME	1282 (1277)	
636	120	0 : 53	3 DME	964 (959)	
742	140	0 : 45	2 DME	646 (641)	
848	160	0 : 39	1 DME	328 (323)	

