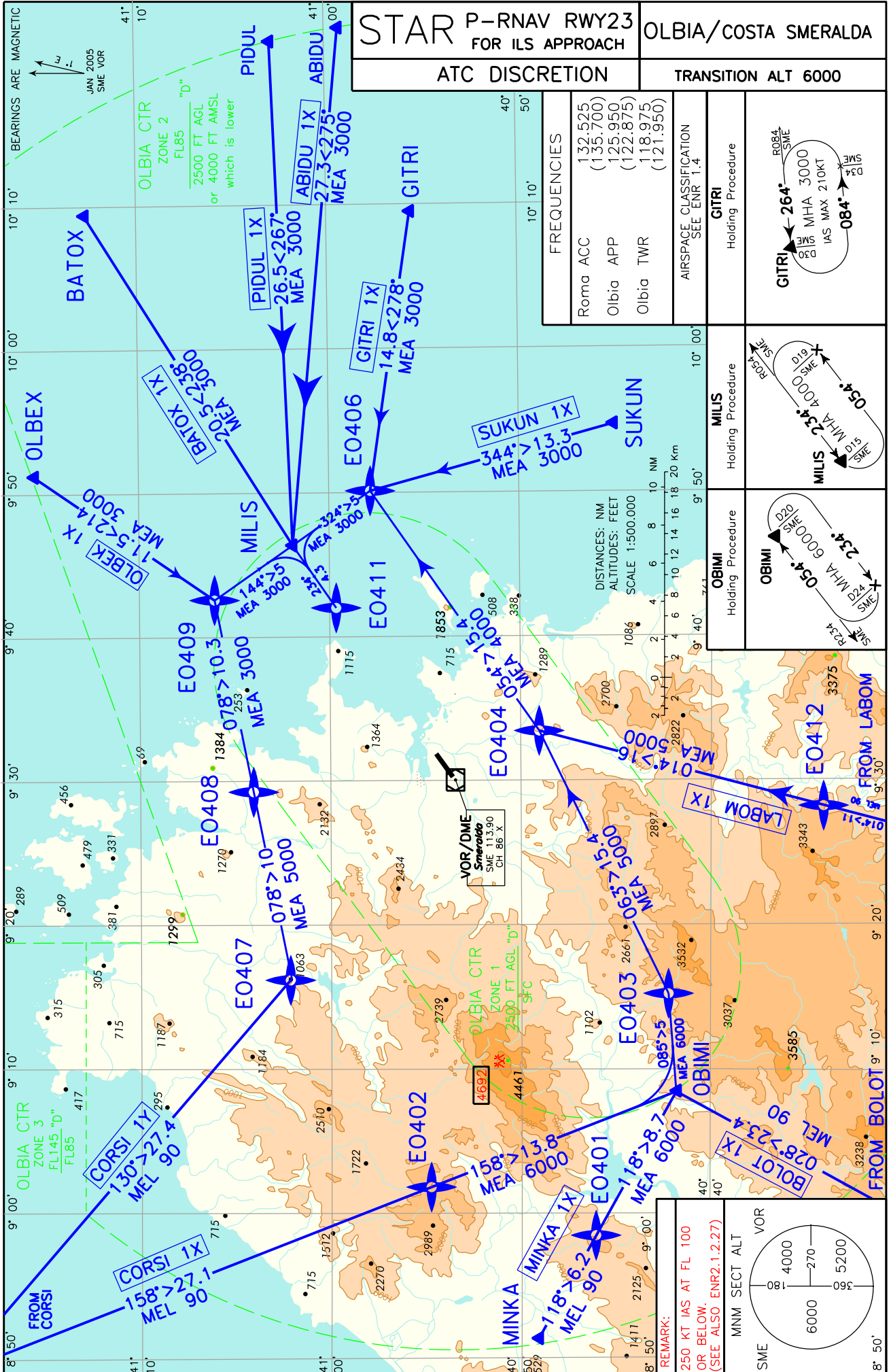


CHANGE: CTR CLASSIFICATION MODIFIED



BATOX 1X
BATOX – MILIS – EO411**BATOX 1X**
BATOX – MILIS – EO411

MEL/MEA: BATOX – EO411: 3000ft

Path Terminator	Waypoint Name	Track °Mag	Turn Direction	MEL/MEA	Speed Limit	Recommended Navaid	Bearing/Range to Navaid	Navigation Performance
IF	BATOX	-	-					P-RNAV
TF	MILIS	238°	-	+3000				P-RNAV
TF	EO411	234°		+3000				P-RNAV

SUKUN 1X
SUKUN – EO406 – MILIS – EO411.**SUKUN 1X**
SUKUN – EO406 – MILIS – EO411.

MEA: SUKUN – EO411: 3000ft

Path Terminator	Waypoint Name	Track °Mag	Turn Direction	MEL/MEA	Speed Limit	Recommended Navaid	Bearing/Range to Navaid	Navigation Performance
IF	SUKUN							P-RNAV
TF	EO406	344°	-	+3000				P-RNAV
TF	MILIS	324°	-	+3000				P-RNAV
TF	EO411	234°	-	+3000	210			P-RNAV

PIDUL 1X
PIDUL – MILIS – EO411**PIDUL 1X**
PIDUL – MILIS – EO411

MEL/MEA: PIDUL – EO411: 3000ft

Path Terminator	Waypoint Name	Track °Mag	Turn Direction	MEL/MEA	Speed Limit	Recommended Navaid	Bearing/Range to Navaid	Navigation Performance
IF	PIDUL	-	-					P-RNAV
TF	MILIS	267°	-	+3000				P-RNAV
TF	EO411	234°		+3000				P-RNAV

ABIDU 1X
ABIDU – MILIS – EO411**ABIDU 1X**
ABIDU – MILIS – EO411

MEL/MEA: ABIDU – EO411: 3000ft

Path Terminator	Waypoint Name	Track °Mag	Turn Direction	MEL/MEA	Speed Limit	Recommended Navaid	Bearing/Range to Navaid	Navigation Performance
IF	ABIDU	-	-					P-RNAV
TF	MILIS	275°	-	+3000				P-RNAV
TF	EO411	234°		+3000				P-RNAV

GITRI 1X
GITRI – EO406 – MILIS – EO411

GITRI 1X
GITRI – EO406 – MILIS – EO411

MEL/MEA: GITRI – EO411: 3000ft

Path Terminator	Waypoint Name	Track °Mag	Turn Direction	MEL/MEA	Speed Limit	Recommended Navaid	Bearing/Range to Navaid	Navigation Performance
IF	GITRI							P-RNAV
TF	EO406	278°	-	+3000				P-RNAV
TF	MILIS	324°	-	+3000				P-RNAV
TF	EO411	234°	-	+3000	210			P-RNAV

LABOM 1X
LABOM – EO412 – EO404 – EO406 – MILIS – EO411

LABOM 1X
LABOM – EO412 – EO404 – EO406 – MILIS – EO411

MEL/MEA: LABOM – EO412: FL90; EO412 – EO404: 5000ft; EO404 – EO406: 4000ft; EO406 – EO411: 3000ft

Path Terminator	Waypoint Name	Track °Mag	Turn Direction	MEL/MEA	Speed Limit	Recommended Navaid	Bearing/Range to Navaid	Navigation Performance
IF	LABOM	-	-	-	-	-	-	P-RNAV
TF	EO412	014°	-	+FL90	-	-	-	P-RNAV
TF	EO404	014°	-	+5000	-	-	-	P-RNAV
TF	EO406	054°	-	+4000	-	-	-	P-RNAV
TF	MILIS	324°	-	+3000	-	-	-	P-RNAV
TF	EO411	234°	-	+3000	210	-	-	P-RNAV

BOLOT 1X
BOLOT – OBIMI – EO403 – EO404 – EO406 – MILIS – EO411

BOLOT 1X
BOLOT – OBIMI – EO403 – EO404 – EO406 – MILIS – EO411

MEL/MEA: BOLOT – OBIMI: FL 90; OBIMI – EO403: 6000ft; EO403 – EO404: 5000ft; EO404 – EO406: 4000ft; EO406 – EO411: 3000ft

Path Terminator	Waypoint Name	Track °Mag	Turn Direction	MEL/MEA	Speed Limit	Recommended Navaid	Bearing/Range to Navaid	Navigation Performance
IF	BOLOT	-	-	-	-	-	-	P-RNAV
TF	OBIMI	028°	-	+FL90	-	-	-	P-RNAV
TF	EO403	085°	-	+6000	-	-	-	P-RNAV
TF	EO404	063°	-	+5000	-	-	-	P-RNAV
TF	EO406	054°	-	+4000	-	-	-	P-RNAV
TF	MILIS	324°	-	+3000	-	-	-	P-RNAV
TF	EO411	234	-	+3000	210	-	-	P-RNAV

MINKA 1X

MINKA – EO401 – OBIMI – EO403 – EO404 – EO406 – MILIS – EO411

MINKA 1X

MINKA – EO401 – OBIMI – EO403 – EO404 – EO406 – MILIS – EO411

MEL/MEA: MINKA – EO401: FL90; EO401 – EO403: 6000ft; EO403 – EO404: 5000ft; EO404 – EO406: 4000ft; EO406 – EO411: 3000ft

Path Terminator	Waypoint Name	Track °Mag	Turn Direction	MEL/MEA	Speed Limit	Recommended Navaid	Bearing/Range to Navaid	Navigation Performance
IF	MINKA	-	-	-	-	-	-	P-RNAV
TF	EO401	118°	-	+FL90	-	-	-	P-RNAV
TF	OBIMI	118°	-	+6000	-	-	-	P-RNAV
TF	EO403	085°	-	+6000	-	-	-	P-RNAV
TF	EO404	063°	-	+5000	-	-	-	P-RNAV
TF	EO406	054°	-	+4000	-	-	-	P-RNAV
TF	MILIS	324°	-	+3000	-	-	-	P-RNAV
TF	EO411	234	-	+3000	210	-	-	P-RNAV

CORSI 1X

CORSI – EO402 – OBIMI – EO403 – EO404 – EO406 – MILIS – EO411

CORSI 1X

CORSI – EO402 – OBIMI – EO403 – EO404 – EO406 – MILIS – EO411

MEA: CORSI – EO402: FL90; EO402 – EO403: 6000ft; EO403 – EO404: 5000ft; EO404 – EO406: 4000ft; EO406 – EO411: 3000ft

Path Terminator	Waypoint Name	Track °Mag	Turn Direction	MEL/MEA	Speed Limit	Recommended Navaid	Bearing/Range to Navaid	Navigation Performance
IF	CORSI	-	-	-	-	-	-	P-RNAV
TF	EO402	158°	-	+FL90	-	-	-	P-RNAV
TF	OBIMI	158°	-	+6000	-	-	-	P-RNAV
TF	EO403	085°	-	+6000	-	-	-	P-RNAV
TF	EO404	063°	-	+5000	-	-	-	P-RNAV
TF	EO406	054°	-	+4000	-	-	-	P-RNAV
TF	MILIS	324°	-	+3000	-	-	-	P-RNAV
TF	EO411	234	-	+3000	210	-	-	P-RNAV

CORSI 1Y

CORSI – EO407 – EO408 – EO409 – MILIS – EO411

CORSI 1Y

CORSI – EO407 – EO408 – EO409 – MILIS – EO411

MEA: CORSI – EO407: FL90; EO407 – EO408: 5000ft – EO408 – EO411: 3000ft

Path Terminator	Waypoint Name	Track °Mag	Turn Direction	MEL/ MEA	Speed Limit	Recommended Navaid	Bearing/ Range to Navaid	Navigation Performance
IF	CORSI	-	-	-	-	-	-	P-RNAV
TF	EO407	130°	-	+FL90	-	-	-	P-RNAV
TF	EO408	078°	-	+5000	-	-	-	P-RNAV
TF	EO409	078°	-	+3000	-	-	-	P-RNAV
TF	MILIS	144°	-	+3000	-	-	-	P-RNAV
TF	EO411	234°	-	+3000	210	-	-	P-RNAV

OLBEK 1X

OLBEK – EO409 – MILIS – EO411

OLBEK 1X

OLBEK – EO409 – MILIS – EO411

MEA: OLBEK – EO411: 3000 ft

Path Terminator	Waypoint Name	Track °Mag	Turn Direction	MEL/ MEA	Speed Limit	Recommended Navaid	Bearing/ Range to Navaid	Navigation Performance
IF	OLBEK	-	-	-	-	-	-	P-RNAV
TF	EO409	214°	-	+3000	-	-	-	P-RNAV
TF	MILIS	144°	-	+3000	-	-	-	P-RNAV
TF	EO411	234°	-	+3000	210	-	-	P-RNAV

Waypoints Table formatted according ARINC 424 standards

Waypoint	Latitude	Longitude
EO401	N040460759	E008583165
EO402	N040544844	E009014897
EO403	N040421985	E009151253
EO404	N040490430	E009332520
EO406	N040575191	E009500687
EO407	N041020802	E009161702
EO408	N041041980	E009304711
EO409	N041060558	E009423519
EO411	N040592775	E009414085
EO412	N040333168	E009275786