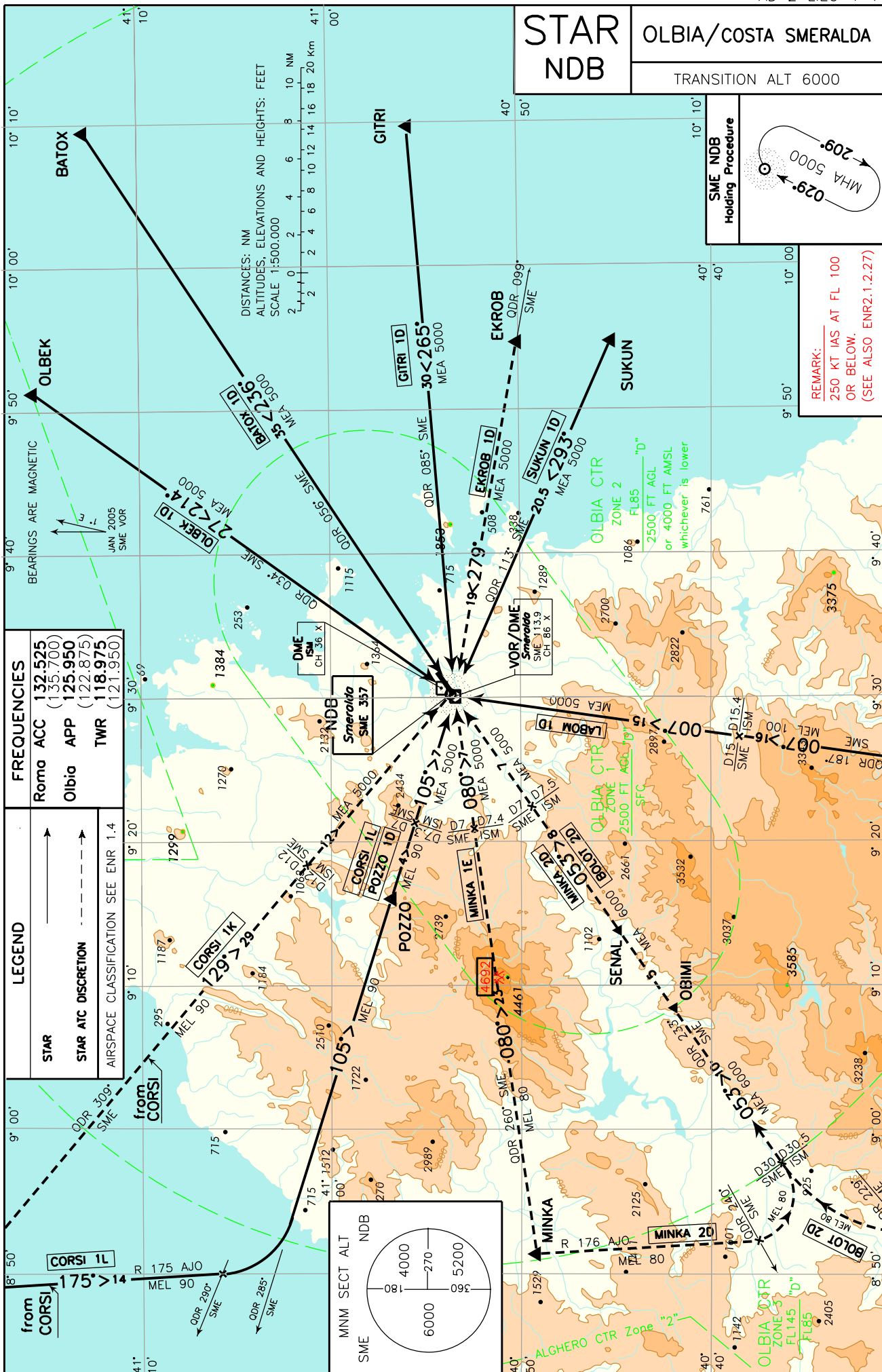


CHANGE: CTR CLASSIFICATION MODIFIED

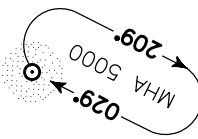


STAR NDB

OLBIA/COSTA SMERALDA

TRANSITION ALT 6000

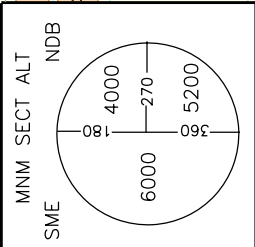
SME NDB Holding Procedure



REMARK: 250 KT IAS AT FL 100 OR BELOW. (SEE ALSO ENR2.1.2.27)

FREQUENCIES	
Romo ACC	132.525 (135.700)
Olbio APP	125.950 (122.875)
TWR	118.975 (121.950)

LEGEND	
STAR	AIRSPACE CLASSIFICATION SEE ENR 1.4
STAR ATC DISCRETION	



**BATOX 1D**

BATOX – TR 236° (QDR 056° SME NDB) – SME NDB.

MEA: BATOX – SME NDB: 5000 FT.

**SUKUN 1D**

SUKUN – TR 293° (QDR 113° SME NDB) – SME NDB.

MEA: SUKUN – SME NDB: 5000 FT.

**LABOM 1D**

LABOM – TR 007° (QDR 187° SME NDB) – SME NDB.

MEL/MEA: LABOM – INT QDR 187° SME NDB/15NM SME DME (o/or 15.4NM ISM DME): FL 100; INT QDR 187° SME NDB/15NM SME DME (o/or 15.4NM ISM DME) – SME NDB: 5000 FT.

**BOLOT 2D (a discrezione ATC)**

BOLOT – TR 356° (RDL 176 AJO VOR) fino ad attraversare QDR 229° SME NDB, quindi virare a destra fino ad intercettare e seguire QDR 233° SME NDB (TR 053°) per il punto OBIMI, quindi procedere SENAL – SME NDB.

MEL/MEA: BOLOT – QDR 233° SME NDB/30NM SME DME (o/or 30.5NM ISM DME): FL 80; QDR 233° SME NDB/30NM SME DME (o/or 30.5NM ISM DME) – QDR 233° SME NDB/7NM SME DME (o/or 7.5NM ISM DME): 6000 FT; QDR 233° SME NDB/7NM SME DME (o/or 7.5NM ISM DME) – SME NDB: 5000 FT.

**MINKA 2D (a discrezione ATC)**

MINKA – TR 176° (RDL 176 AJO VOR) fino ad attraversare QDR 240° SME NDB, quindi virare a sinistra fino ad intercettare e seguire QDR 233° SME NDB (TR 053°) per il punto OBIMI, quindi procedere SENAL – SME NDB.

MEL/MEA: BOLOT – QDR 233° SME NDB/30NM SME DME (o/or 30.5NM ISM DME): FL 80; QDR 233° SME NDB/30NM SME DME (o/or 30.5NM ISM DME) – QDR 233° SME NDB/7NM SME DME (o/or 7.5NM ISM DME): 6000 FT; QDR 233° SME NDB/7NM SME DME (o/or 7.5NM ISM DME) – SME NDB: 5000 FT.

**MINKA 1E (a discrezione ATC)**

MINKA – TR 080° (QDR 260° SME NDB) – SME NDB.

MEL/MEA: MINKA – QDR 260° SME NDB/7NM SME DME (o/or 7.4NM ISM DME): FL 80; QDR 260° SME NDB/7NM SME DME (o/or 7.4NM ISM DME) – SME NDB: 5000 FT.

**POZZO 1D**

POZZO – TR 105° (QDR 285° SME NDB) – SME NDB.

MEL/MEA: POZZO – QDR 285° SME NDB/7NM SME DME (o/or 7.3NM ISM DME): FL 90; QDR 285° SME NDB/7NM SME DME (o/or 7.3NM ISM DME) – SME NDB: 5000 FT.

**OLBEK 1D**

OLBEK – TR 214° (QDR 034° SME NDB) – SME NDB.

MEA: OLBEK – SME NDB: 5000 FT.

**GITRI 1D**

GITRI – TR 265° (QDR 085° SME NDB) – SME NDB.

MEA: GITRI – SME NDB: 5000 FT.

**EKROB 1D (a discrezione ATC)**

EKROB – TR 279° (QDR 099° SME NDB) – SME NDB.

MEA: EKROB – SME NDB: 5000 FT.

**CORSI 1L**

CORSI – TR 175° (RDL 175 AJO VOR) fino ad intercettare QDR 290° SME NDB, quindi virare a sinistra fino ad intercettare e seguire QDR 285° SME NDB (TR 105°) per il punto POZZO, quindi SME NDB.

MEL/MEA: CORSI – QDR 285° SME NDB/7NM SME DME(o/or 7.3NM ISM DME): FL 90; QDR 285° SME NDB/7NM SME DME (o/or 7.3NM ISM DME) – SME NDB: 5000 FT.

**CORSI 1K (a discrezione ATC)**

CORSI – TR 129° (QDR 309° SME NDB) – SME NDB.

MEL/MEA: CORSI – QDR 309° SME NDB/12NM SME DME (o/or 12NM ISM DME): FL 90; QDR 309° SME NDB/12NM SME DME (o/or 12NM ISM DME) – SME NDB: 5000 FT.

**BATOX 1D**

BATOX – TR 236° (QDR 056° SME NDB) – SME NDB.

**SUKUN 1D**

SUKUN – TR 293° (QDR 113° SME NDB) – SME NDB.

**LABOM 1D**

LABOM – TR 007° (QDR 187° SME NDB) – SME NDB.

**BOLOT 2D (ATC discretion)**

BOLOT – TR 356° (RDL 176 AJO VOR) until crossing QDR 229° SME NDB, then turn right until joining QDR 233° SME NDB (TR 053°) bound to OBIMI, then proceed SENAL – SME NDB.

**MINKA 2D (ATC discretion)**

MINKA – TR 176° (RDL 176 AJO VOR) until crossing QDR 240° SME NDB, then turn left until joining QDR 233° SME NDB (TR 053°) bound to OBIMI, then proceed SENAL – SME NDB.

**MINKA 1E (ATC discretion)**

MINKA – TR 080° (QDR 260° SME NDB) – SME NDB.

**POZZO 1D**

POZZO – TR 105° (QDR 285° SME NDB) – SME NDB.

**OLBEK 1D**

OLBEK – TR 214° (QDR 034° SME NDB) – SME NDB.

**GITRI 1D**

GITRI – TR 265° (QDR 085° SME NDB) – SME NDB.

**EKROB 1D (ATC discretion)**

EKROB – TR 279° (QDR 099° SME NDB) – SME NDB.

**CORSI 1L**

CORSI – TR 175° (RDL 175 AJO VOR) until crossing QDR 290° SME NDB, then turn left until joining QDR 285° SME NDB (TR 105°) bound to POZZO, then SME NDB.

**CORSI 1K (ATC discretion)**

CORSI – TR 129° (QDR 309° SME NDB) – SME NDB.

Intenzionalmente bianca

*Intentionally left blank*