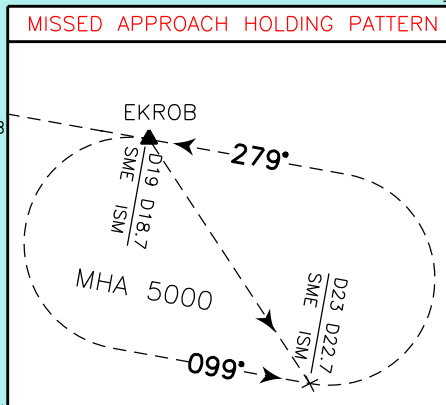
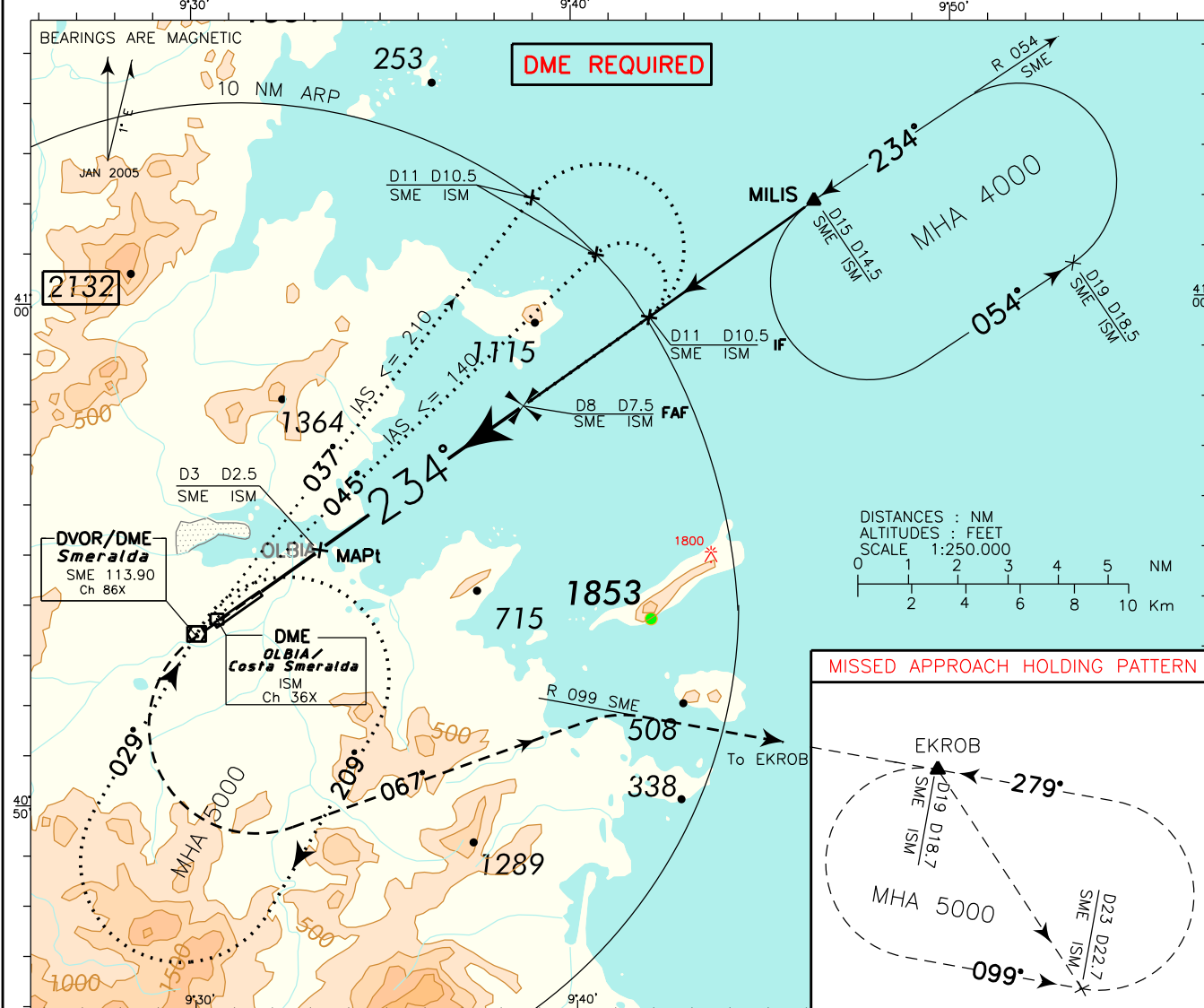


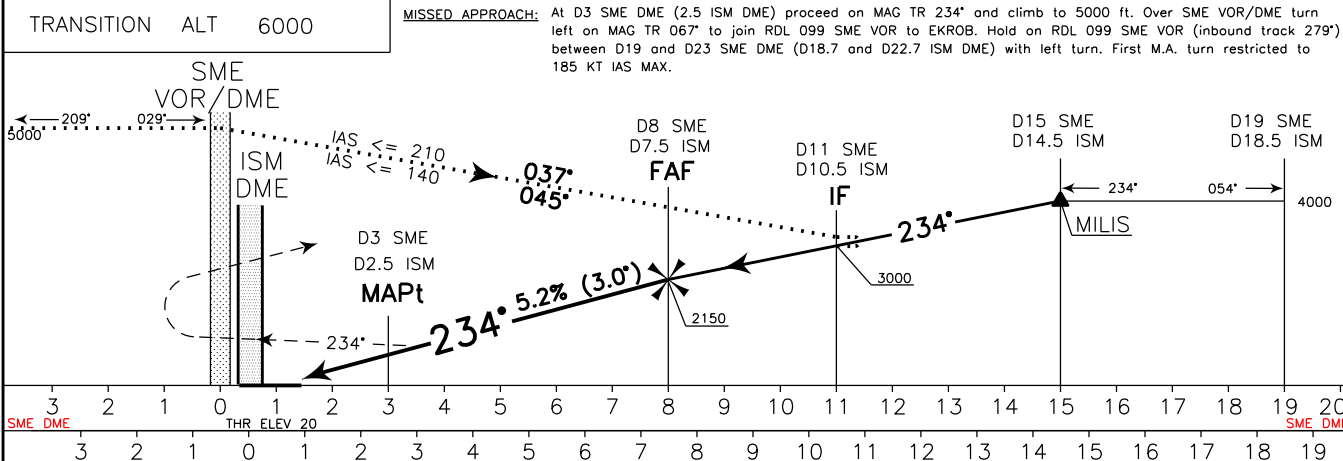
CHANGE: REVISED PROCEDURE AND RENUMBERED PAGE

DOC 8168 ED 5 - 2006 - AMDT 4

APP	<i>Olbia Approach</i>	125.950 (122.875)	AD ELEV	L	OLBIA/ COSTA SMERALDA
TWR	<i>Olbia Tower</i>	118.975 (121.950)	37	E	
					VOR Z RWY 23



MISSED APPROACH: At D3 SME DME (2.5 ISM DME) proceed on MAG TR 234° and climb to 5000 ft. Over SME VOR/DME turn left on MAG TR 067° to join RDL 099 SME VOR to EKROB. Hold on RDL 099 SME VOR (inbound track 279°) between D19 and D23 SME DME (D18.7 and D22.7 ISM DME) with left turn. First M.A. turn restricted to 185 KT IAS MAX.



OCA(OCH)		A	B	C	D	CIRCLING SECTORS WARNING: DURING NIGHT AND IN IMC CONDITIONS CIRCLING IS FORBIDDEN	GS	FT PER MIN	FAF-MAPt	MAPt-THR	DME (SME)	ALT (HGT)	MNM SECT ALT	
STRAIGHT IN APPROACH		850 (830)							5 NM	1.49 NM			8	7
VOR DME	MAPt DEFINED BY A DISTANCE (TIMING)	1400 (1380)					80	426	3 : 45	1 : 06	8	2150 (2130)	6000	4000
		100	533	3 : 00	0 : 53		7	1830 (1810)						
		120	639	2 : 30	0 : 44	6	1510 (1490)							
		140	746	2 : 08	0 : 38	5	1190 (1170)							
		160	852	1 : 48	0 : 33	4	870 (850)							
CIRCLING (see warning) (*)		1400 (1363)	1600 (1563)	1960 (1923)	3	550 (530)								