

DOC 8168 ED 5 - 2006 - AMDT 4

CHANGE: RENUMBERED PAGE

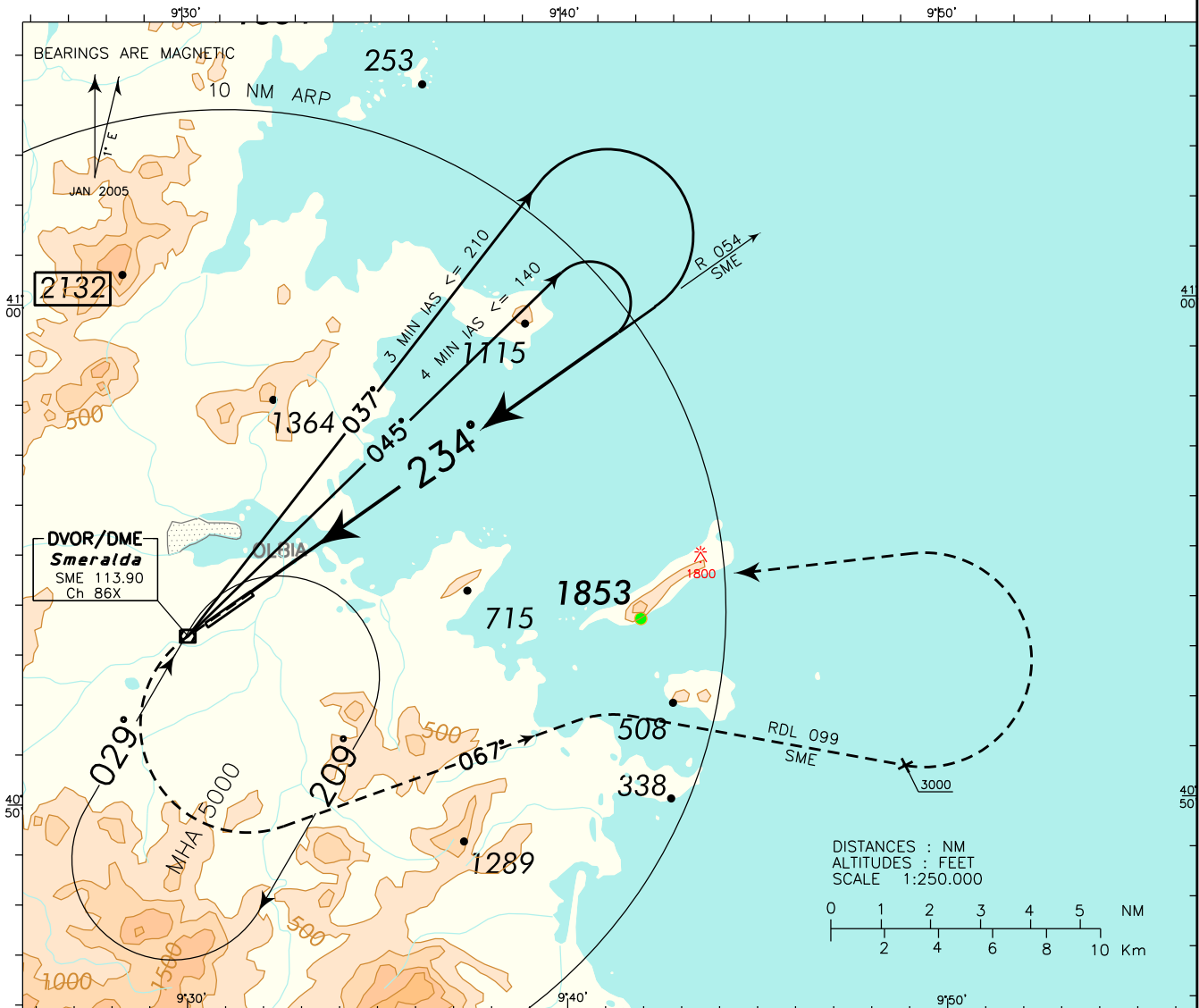
REMARK:
In case of turbulence,
minimum omnidirectional entry
altitude for SME VOR holding is
5500 ft.

APP *Olbia Approach* **125.950**
(122.875)
TWR *Olbia Tower* **118.975**
(121.950)

AD ELEV
37

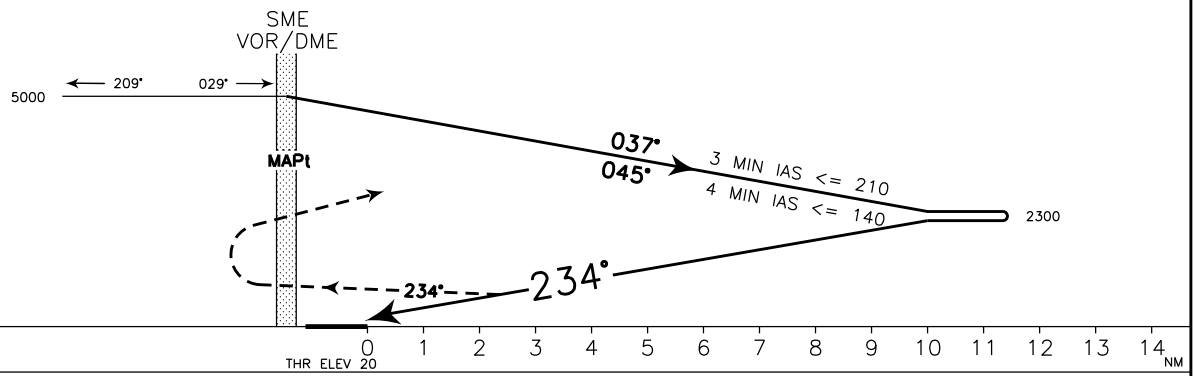
L
I
E
O

OLBIA/ COSTA SMERALDA
VOR X RWY 23



TRANSITION ALT 6000

MISSED APPROACH: Proceed on TR 234° and climb to 5000 ft. Over SME VOR DME turn left on TR 067° to join RDL 099 SME VOR. Crossing 3000 ft, turn left and return to SME VOR. First M.A. turn restricted to 185 kt IAS MAX.



OCA(OCH)		A	B	C	D	CIRCLING SECTORS NOT ALLOWED WARNING: DURING NIGHT AND IN IMC CONDITIONS CIRCLING IS FORBIDDEN	GS	FT/MIN	DIST	ALT (HGT)	MNM SECT ALT	
STRAIGHT IN APPROACH	VOR	1400 (1380)										SME
CIRCLING (*) (see warning)		1400 (1363)	1600 (1563)	1960 (1923)							6000	4000 270 5200