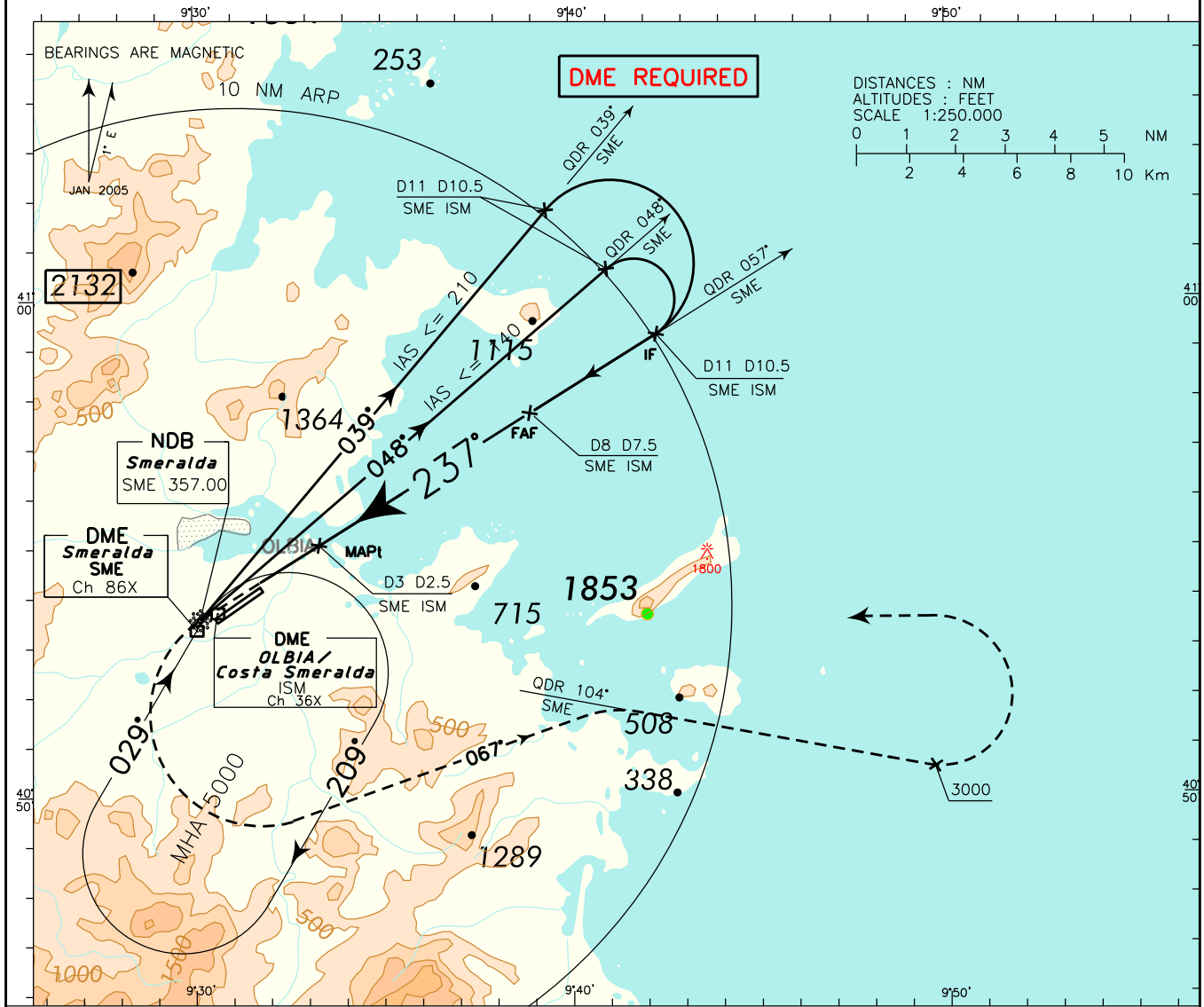


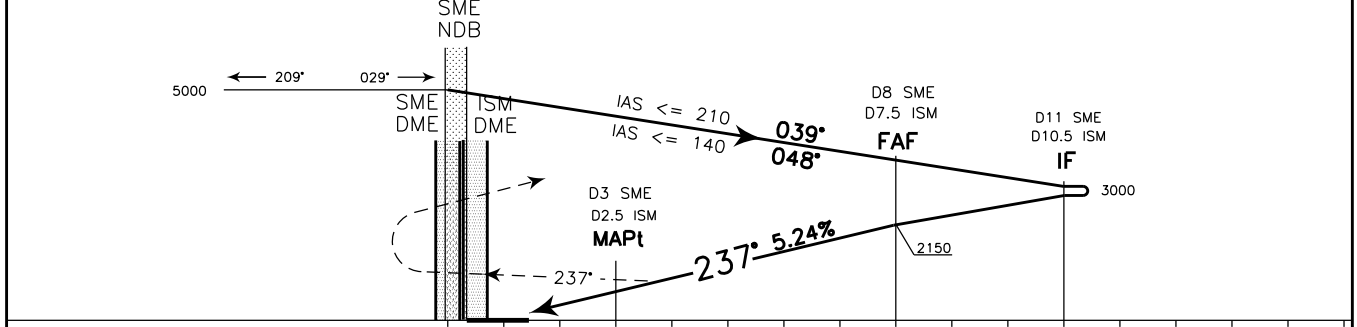
DOC 8168 ED 5 - 2006 - AMDT 4
CHANGE: RENUMBERED PAGE

<p>REMARK: In case of turbulence, minimum omnidirectional entry altitude for SME VOR holding is 5500 ft.</p>	<p>APP Olbia Approach 125.950 (122.875)</p> <p>TWR Olbia Tower 118.975 (121.950)</p>	<p>AD ELEV 37</p>	<p>LIEO</p>	<p>OLBIA/ COSTA SMERALDA</p> <p>NDB Z RWY 23</p>
---	--	-------------------------------------	--------------------	--



TRANSITION ALT 6000

MISSED APPROACH: At D3 SME DME (D2.5 ISM DME) proceed on TR 237° and climb to 5000 ft. Over SME NDB turn left on TR 067° to join QDR 104° SME NDB. Crossing 3000 ft turn left and return to SME NDB to be reached at 5000 ft. First M.A. turn restricted to 185 kt IAS MAX



SME DME		THR ELEV 20																SME DME											
ISM DME		THR ELEV 20																ISM DME											
OCA(OCH)		A	B	C	D	<p>CIRCLING SECTORS</p> <p>WARNING: DURING NIGHT AND IN IMC CONDITIONS CIRCLING IS FORBIDDEN</p>										GS		FT PER MIN		FAF-MAPt		MAPt-THR		DME SME		ALT (HGT)		MNM SECT ALT	
STRAIGHT IN APPROACH	NDB DME	1100 (1080)														80	426	3 : 45	1 : 06	8	2150 (2130)	SME							
		1100 (1063)														100	533	3 : 00	0 : 53	7	1830 (1810)	NDB							
		1600(1563)														120	639	2 : 30	0 : 44	6	1510 (1490)	SME							
		1960(1923)				140	746	2 : 08	0 : 38	5	1190 (1170)	NDB																	
CIRCLING (see warning)		1960(1923)				160	852	1 : 48	0 : 33	3	550 (530)	SME		NDB															