

ICAO - INSTRUMENT APPROACH CHART

AD 2 LIEO 5-17

REMARK:
In case of turbulence,
minimum omnidirectional entry
altitude for SME NDB holding is
5500 ft.

APP *Olbia Approach* **125.950**
(122.875)
TWR *Olbia Tower* **118.975**
(121.950)

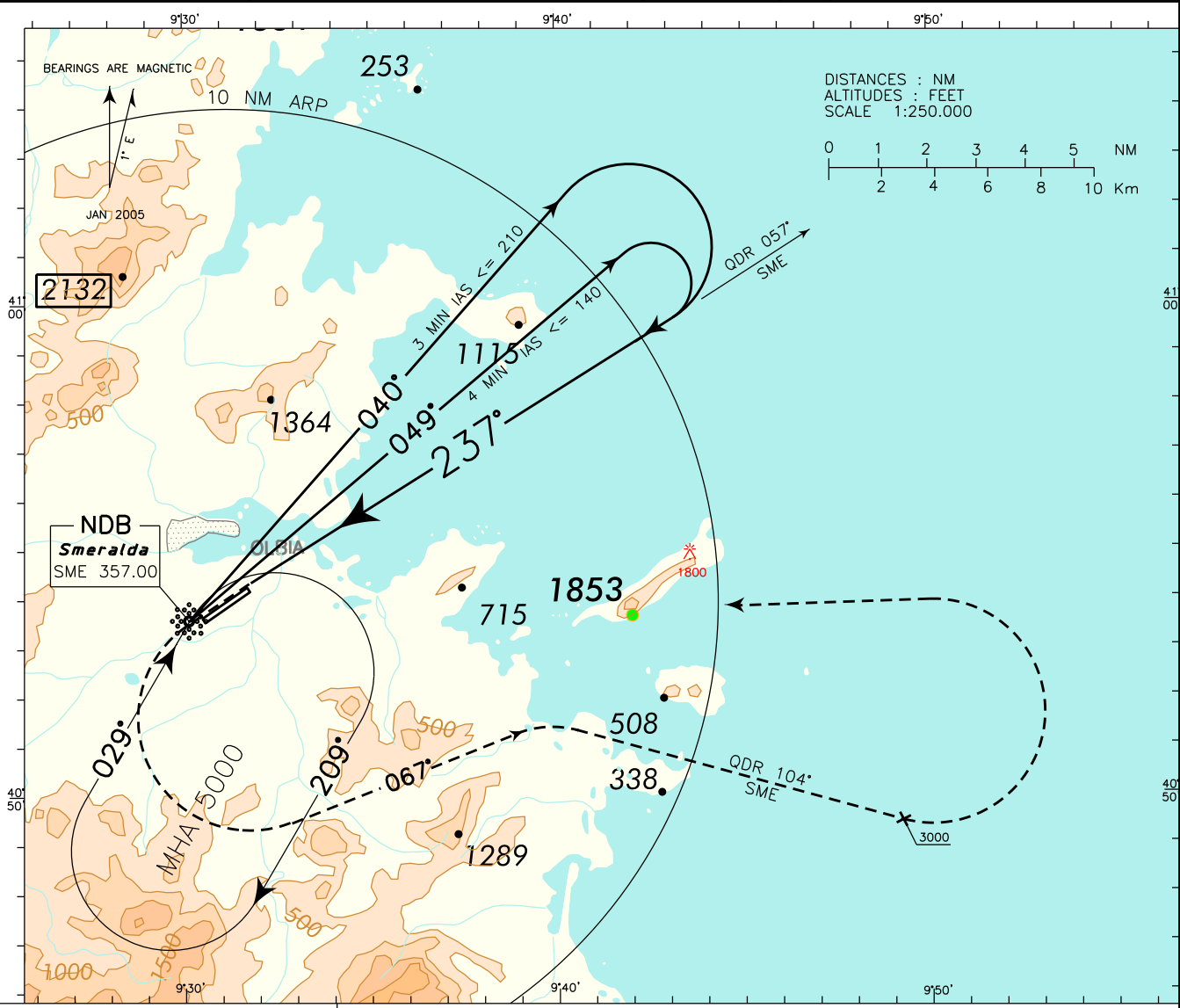
AD ELEV
37

L
I
E
O

OLBIA/ COSTA SMERALDA
NDB Y RWY 23

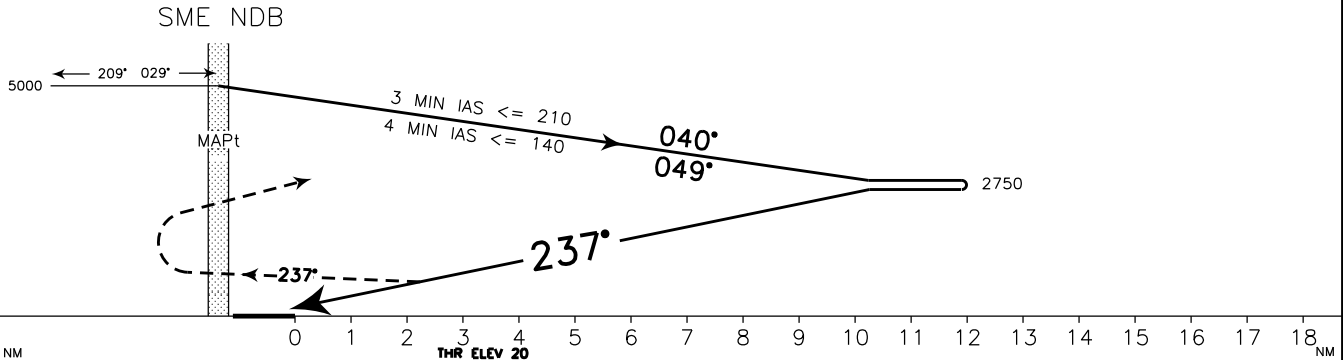
DOC 8168 ED 5 - 2006 - AMDT 4

CHANGE: RENUMBERED PAGE



TRANSITION ALT 6000

MISSED APPROACH: Proceed on TR 237° and climb to 5000 ft. Over SME NDB turn left on TR 067° to join QDR 104° SME NDB. Crossing 3000 ft, turn left and return to SME NDB to be reached at 5000 ft. First M.A. turn restricted to 185 kt IAS MAX.



OCA(OCH)		A	B	C	D
STRAIGHT IN APPROACH	NDB	1450 (1430)			
	CIRCLING (see warning) (*)	1450 (1413)	1600(1563)	1960(1923)	

CIRCLING SECTORS

NOT ALLOWED

WARNING:
DURING NIGHT AND IN IMC CONDITIONS
CIRCLING IS FORBIDDEN

GS	FT/MIN	DIST	ALT (HGT)

