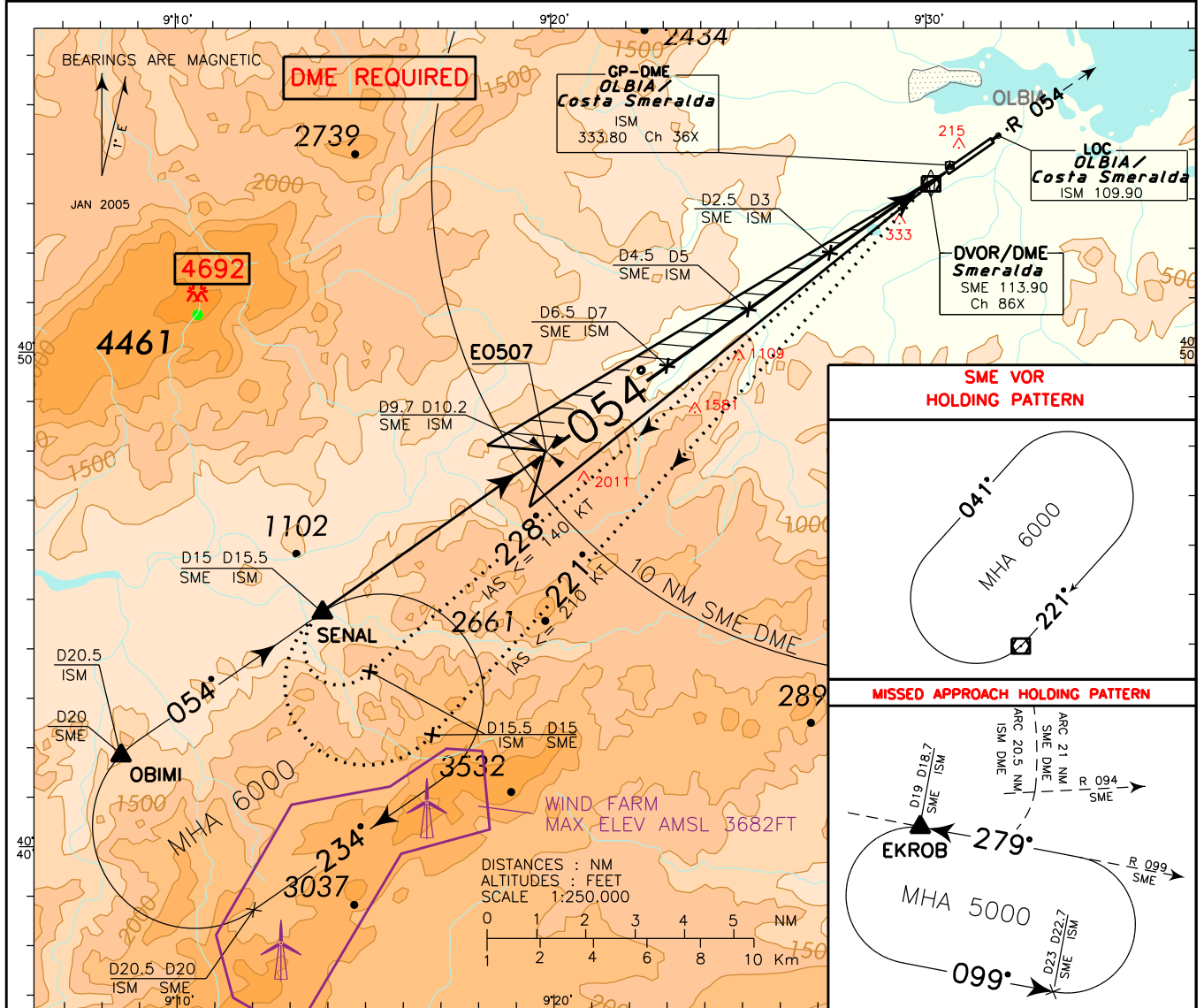


DOC 8168 ED 5 - 2006 - AMDT 4

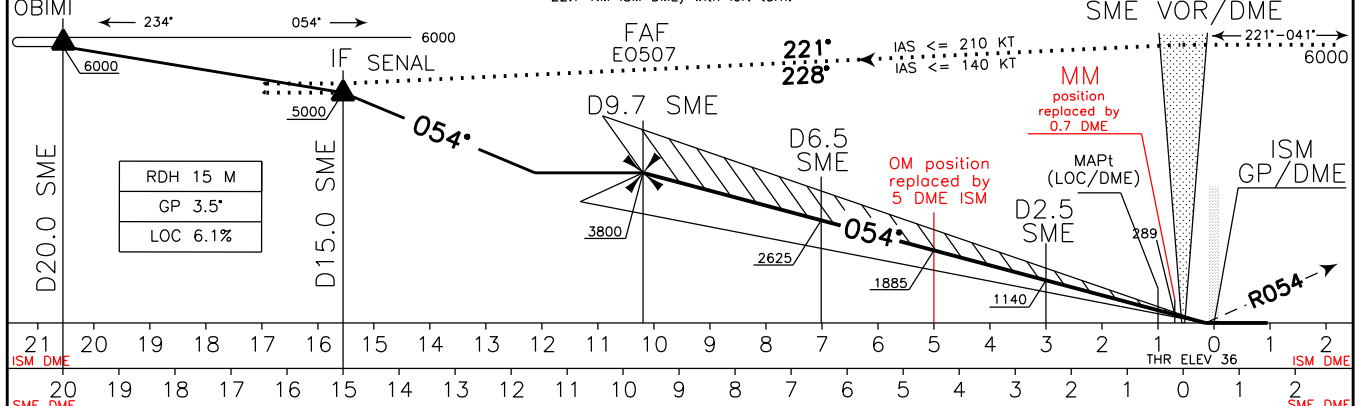
CHANGE: REVISED PROCEDURE

REMARK: During night hours, PAPI indications mandatory	APP	Olbia Approach	125.950 (122.875)	AD ELEV	LIEO	OLBIA/ COSTA SMERALDA ILS or LOC Z RWY 05
	TWR	Olbia Tower	118.975 (121.950)	37		



TRANSITION ALT 6000

MISSED APPROACH: Proceed on RDL 054 SME VOR climbing to 5000 ft. Cross 19 NM SME DME (18.5 NM ISM DME) at 2500 ft or above then turn right to join and follow 21NM ARC SME DME (20.5 NM ARC ISM DME) bound to EKROB. Hold on RDL 099 SME VOR (INBOUND TR 279°) between 19 NM and 23 NM SME DME (18.7 NM and 22.7 NM ISM DME) with left turn.



STRAIGHT IN APPROACH	OCA(OCH)				CIRCLING SECTORS NOT ALLOWED	GS	FT PER MIN	FAF-OM 5.2 NM	OM-MM 4.3 NM	ISM DME	ALT (HGT)	MNM SECT ALT	
	A	B	C	D								SME	VOR
ILS	310 (274)	320 (284)	330 (294)	340 (304)		80	496	3 : 54	3 : 14	7	2625 (2588)		
LOC						100	620	3 : 07	2 : 34	6	2255 (2218)		
DME	640 (603)					120	744	2 : 36	2 : 09	5	1885 (1848)		
						140	868	2 : 14	1 : 51	4	1515 (1478)		
						160	992	1 : 57	1 : 37	3	1140 (1103)		
CIRCLING (*) (see warning)	900 (863)		1600(1563) 1960(1923)			180	1116	1 : 44	1 : 26	1	400 (363)		