

ICAO - INSTRUMENT APPROACH CHART

AD 2 LIEO 5-5

CHANGE: REVISED PROCEDURE AND RENUMBERED PAGE

REMARKS:

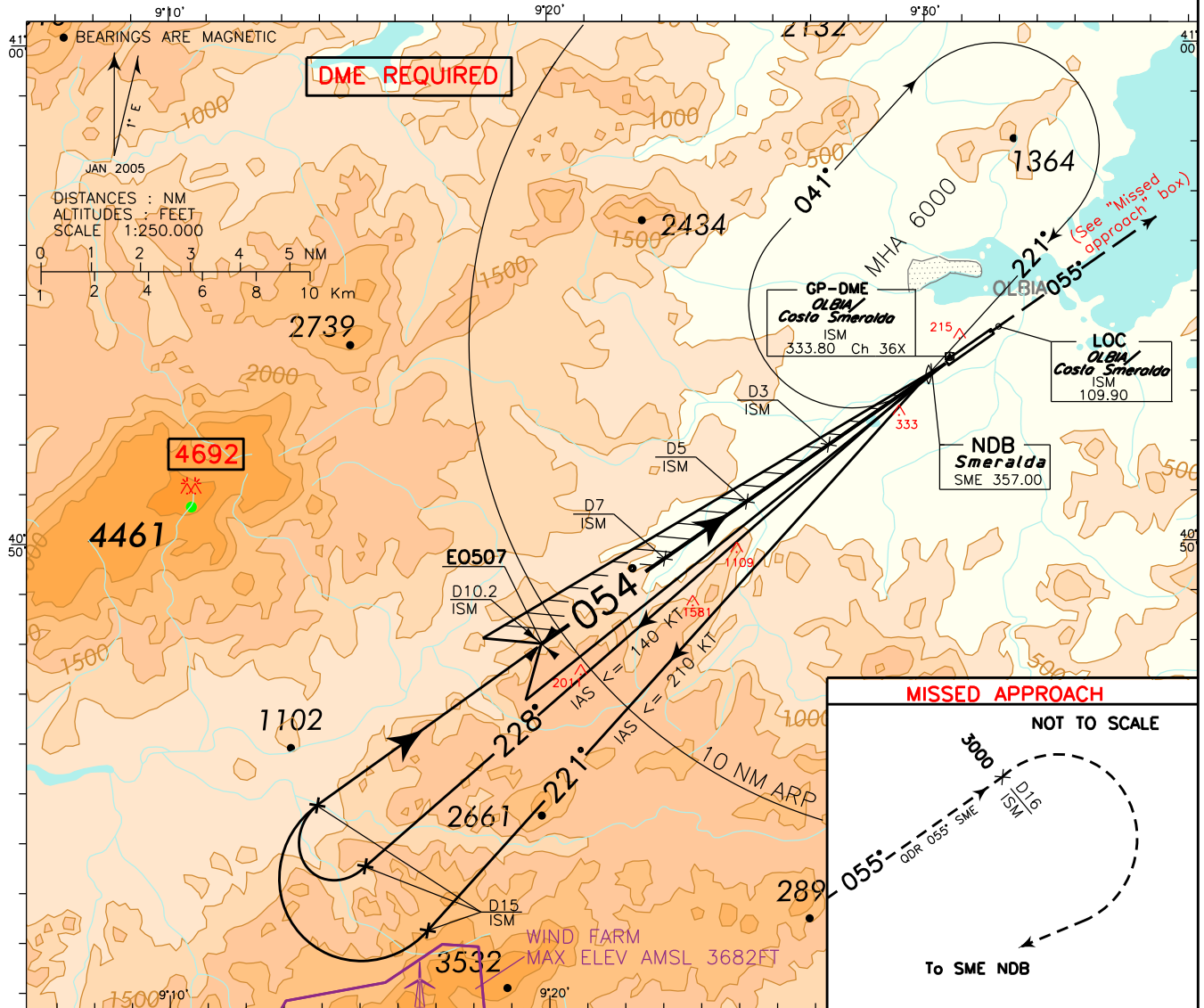
- 1) This procedure can be used only in case of SME VOR unavailability
- 2) During night hours, PAPI indications mandatory

APP *Olbia Approach* 125.950 (122.875)
 TWR *Olbia Tower* 118.975 (121.950)

AD ELEV 37

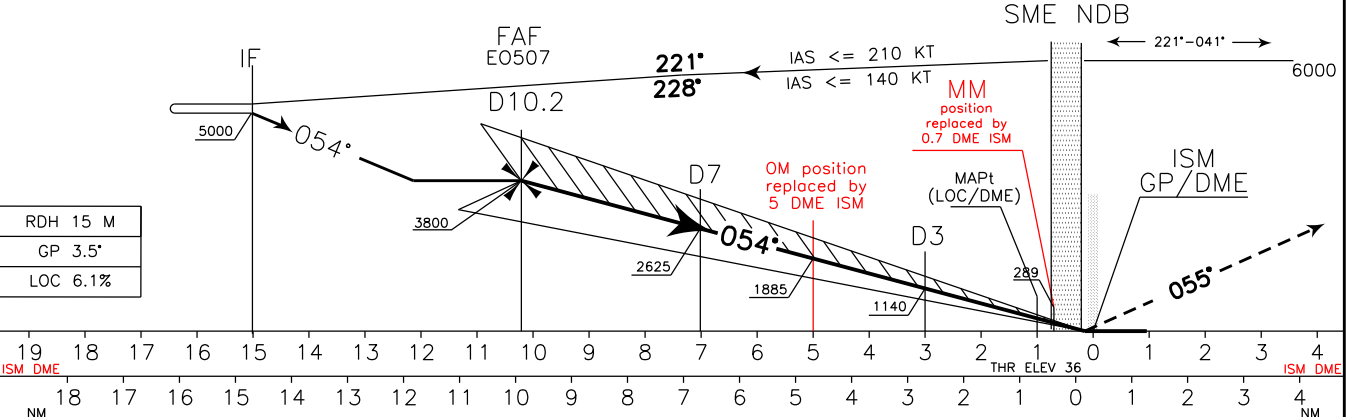
LIEO

OLBIA/ COSTA SMERALDA
 ILS or LOC V RWY 05



TRANSITION ALT 6000

MISSED APPROACH: Proceed on QDR 055° SME NDB climbing to 6000 ft. Cross D16 ISM DME at 3000 ft or above then turn right inbound to SME NDB to be reached at 6000 ft.



OCA(OCH)		A	B	C	D
STRAIGHT IN APPROACH	ILS	310 (274)	320 (284)	330 (294)	340 (304)
	LOC DME	640 (603)			
CIRCLING (*)		900 (863)	1600(1563)	1960(1923)	

CIRCLING SECTORS

WARNING:
 DURING NIGHT AND IN IMC CONDITIONS
 CIRCLING IS FORBIDDEN

GS	FT PER MIN	FAF-OM		OM-MM		DME ISM	ALT (HGT)	
		5.2 NM	4.3 NM					
80	496	3 : 54	3 : 14	7	2625 (2588)			
100	620	3 : 07	2 : 34	6	2255 (2218)			
120	744	2 : 36	2 : 09	5	1885 (1848)			
140	868	2 : 14	1 : 51	4	1515 (1478)			
160	992	1 : 57	1 : 37	3	1140 (1103)			
180	1116	1 : 44	1 : 26	2	770 (733)			
				1	400 (363)			

