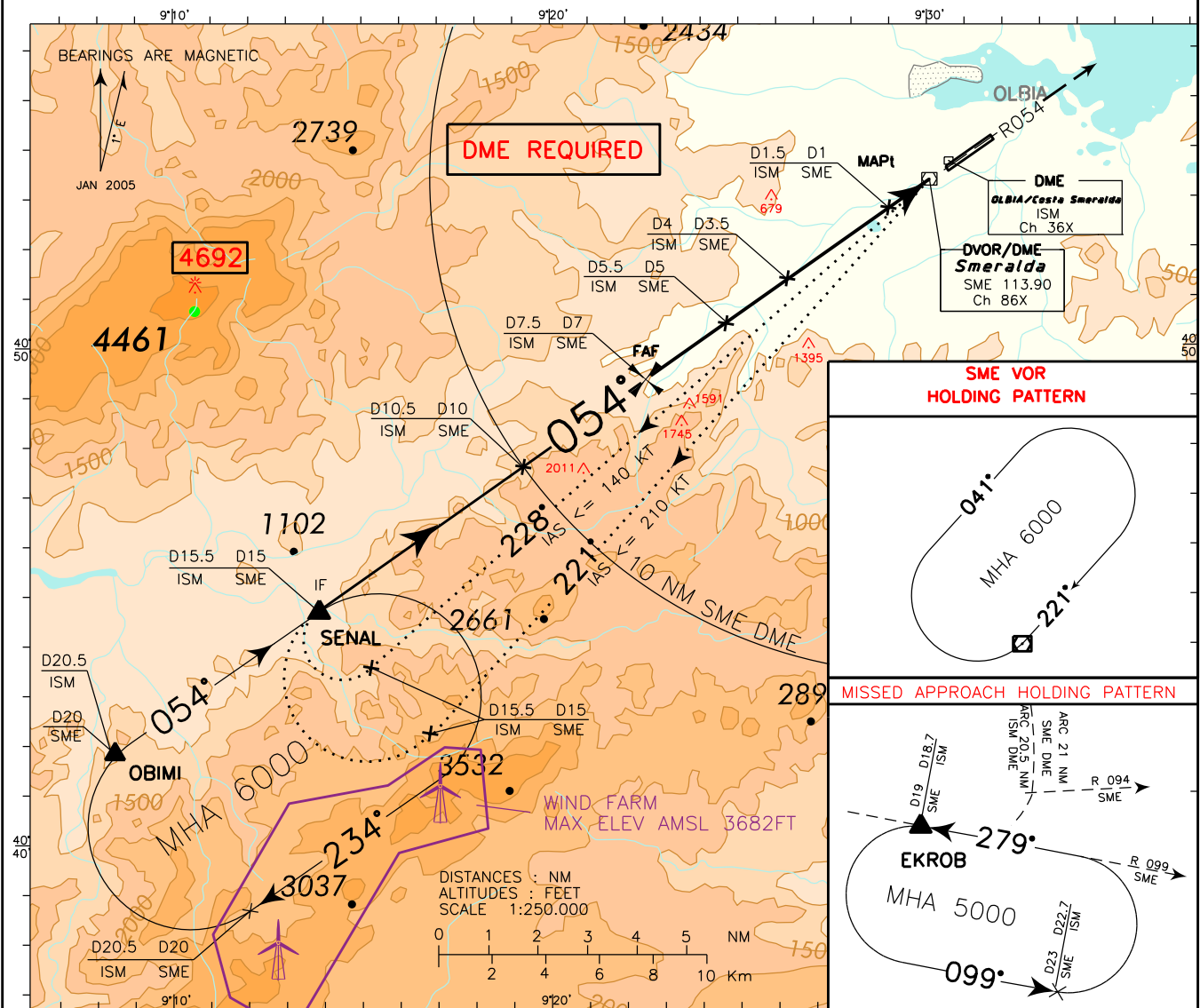


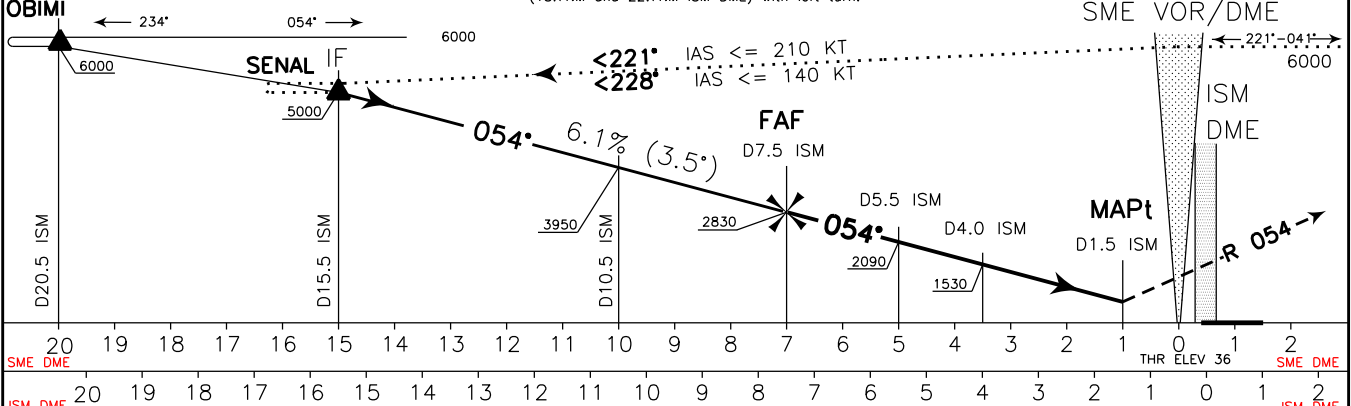
CHANGE: REVISED PROCEDURE

DOC 8168 ED 5 - 2006 - AMDT 4

REMARK: During night hours, PAPI indications mandatory	APP	Olbia Approach	125.950 (122.875)	AD ELEV	LIEO	OLBIA/ COSTA SMERALDA VOR RWY 05
	TWR	Olbia Tower	118.975 (121.950)	37		



TRANSITION ALT 6000
 MISSED APPROACH: At 1NM SME DME (1.5NM ISM DME) proceed on RDL 054 SME VOR climbing to 5000 ft. Cross 19NM SME DME (18.5NM ISM DME) at 2500 ft or above, then turn right to join and follow 21NM ARC SME DME (20.5NM ARC ISM DME) bound to EKROB. Hold on RDL 099 SME VOR (INBOUND TR 279°) between 19NM and 23NM SME DME (18.7NM and 22.7NM ISM DME) with left turn.



OCA(OCH)		A	B	C	D	CIRCLING SECTORS WARNING: DURING NIGHT AND IN IMC CONDITIONS CIRCLING IS FORBIDDEN	GS	FT PER MIN	FAF-D5 2 NM	D5-MAPT 4 NM	DME SME	ALT (HGT)	MNM SECT ALT	
STRAIGHT IN APPROACH	VOR DME	850 (813)											SME	VOR
CIRCLING (*) (see warning)		900 (863)	1600 (1563)	1960 (1923)										